

2014 Dialysis Facility Report

(for CMS Survey use in FY 2015)

Purpose of the Report

The *2014 Dialysis Facility Report (DFR)* is provided as a resource for characterizing selected aspects of clinical experience at this facility relative to other caregivers in this state, ESRD Network, and across the United States. Since these data could be useful in quality improvement and assurance activities, each state's surveying agency may utilize this report as a resource during the FY 2015 survey and certification process.

This report has been prepared for this facility by the University of Michigan Kidney Epidemiology and Cost Center (UM-KECC) with funding from the Centers for Medicare & Medicaid Services (CMS) and is based primarily on Medicare claims and data collected for CMS. It is the nineteenth in a series of annual reports. This is one of 6,371 reports that have been distributed to ESRD providers in the U.S.

This DFR includes data specific to CCN(s): 502508

Overview: This report includes summaries of patient characteristics, treatment patterns, and patient outcomes for chronic dialysis patients who were treated in this facility between January 2010 and December 2013. Mortality, hospitalization, and transplantation statistics are reported for a three- or four-year period. Regional and national averages are included to allow for comparisons. Several of the summaries of patient mortality, hospitalization, and transplantation are adjusted to account for the characteristics of the patient mix at this facility, such as age, sex and diabetes as a cause of ESRD. Unless otherwise specified, data refer to hemodialysis (HD) and peritoneal dialysis (PD) patients combined.

Selected highlights from this report are given on pages 2 through 4. For a complete description of the methods used to calculate the statistics in this report, please see the *Guide to the 2014 Dialysis Facility Reports*. The *Guide* may be downloaded from the methodology section of the Dialysis Reports website at www.DialysisReports.org.

What's New This Year: As part of a continuing effort to improve the quality and relevance of this report, the following changes have been incorporated into your 2014 DFR. The UM-KECC ESRD database now includes the new web-based data collection system, CROWNWeb. It was rolled out nationally in May 2012 and replaces the functionality of SIMS. Authorized users may now securely submit, update, and verify data provided to Medicare about people who have ESRD on a monthly basis. Table 14 presents descriptive statistics on a portion of the CROWNWeb clinical data. In addition, the Influenza Vaccination table (Table 5) has been amended to include a fourth year of vaccination statistics to assess the percentage of patients vaccinated by December 31st, 2013.

Table 6 now includes a transfusion summary for adult Medicare dialysis patients treated in your facility and the Standardized Transfusion Ratio (STrR) that allows for national comparison of transfusion activity.

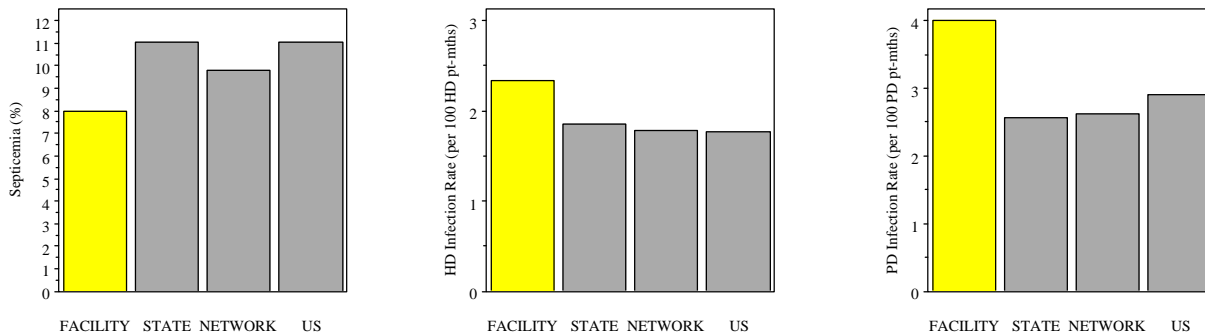
How to Submit Comments

Between July 15, 2014 and August 15, 2014, facilities may submit comments to their state surveyor or UM-KECC by visiting www.DialysisReports.org, logging on to view their report, and clicking on the **Comments & Inquiries** tab. Questions or comments after the comment period is over may be submitted to us directly at Support@DialysisReports.org or 1-877-665-1680.

- (1) **State Surveyor:** Dialysis facilities may submit comments on the DFR for their state's surveyors. State surveyor(s) will receive a copy of their DFR with the comments they submitted in September 2014.
- (2) **UM-KECC:** Submit questions or suggestions to improve the DFR to UM-KECC. These comments will not be shared with CMS or your state surveyor.

Infection (Tables 2 and 8):

- The percentage of Medicare dialysis patients at this facility hospitalized with septicemia during 2010-2013 was 8.0%, compared to 11.1% in your State, 9.8% in your Network, and 11.0% nationally.
- The rate of HD infection among HD patients at this facility in 2013 was 2.3 per 100 HD patient-months, compared to 1.9 in your State, 1.8 in your Network, and 1.8 nationally.
- The rate of PD catheter-related infection was 4.0 per 100 PD patient-months, compared to 2.6 in your State, 2.6 in your Network, and 2.9 nationally.

**Transplantation (Table 3):**

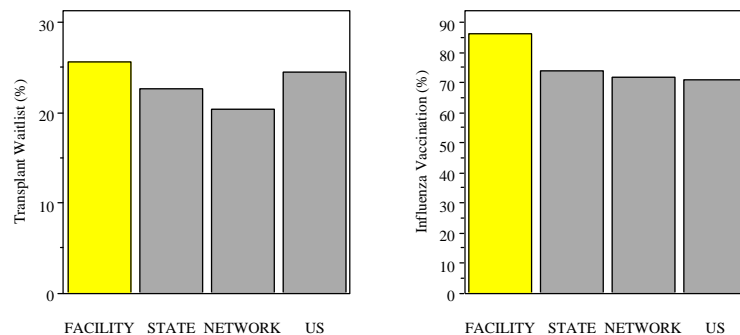
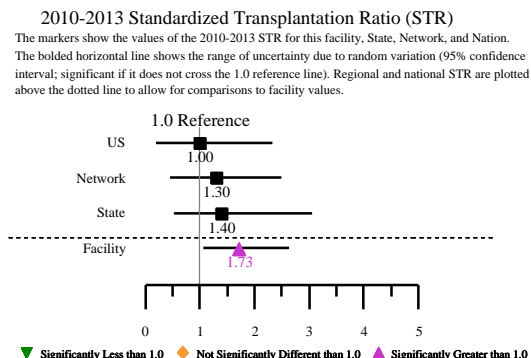
- Of the patients under age 70 treated at this facility during 2010-2013 who had not previously received a transplant, 7% were transplanted annually, while a rate of 4% would be expected for these patients.
- The 2010-2013 Standardized 1st Transplantation Ratio (STR) of observed to expected number of patients transplanted for this facility is 1.73, which is 73% higher than expected for this facility. This difference is statistically significant ($p < 0.05$) and is unlikely to be due to random chance. The 2010-2013 STR for your State and Network is 1.40 and 1.30, respectively.

Transplant Waitlist (Table 4):

- Among the 86 dialysis patients under age 70 treated at this facility on December 31, 2013, 26% were on the kidney transplant waitlist compared to 25% nationally. This difference is not statistically significant ($p \geq 0.05$) and is plausibly due to random chance. The percentage of patients on the kidney transplant waitlist on December 31, 2013 in your State and Network is 23% and 20%, respectively.

Influenza Vaccination (Table 5):

- Among the 96 Medicare dialysis patients treated at this facility on December 31, 2013, 86% were vaccinated between August 1 and December 31, 2013 compared to 71% nationally. This difference is statistically significant ($p < 0.05$) and is unlikely to be due to random chance. The percentage of patients vaccinated in your State, Network, and nation is 74%, 72%, and 71%, respectively.

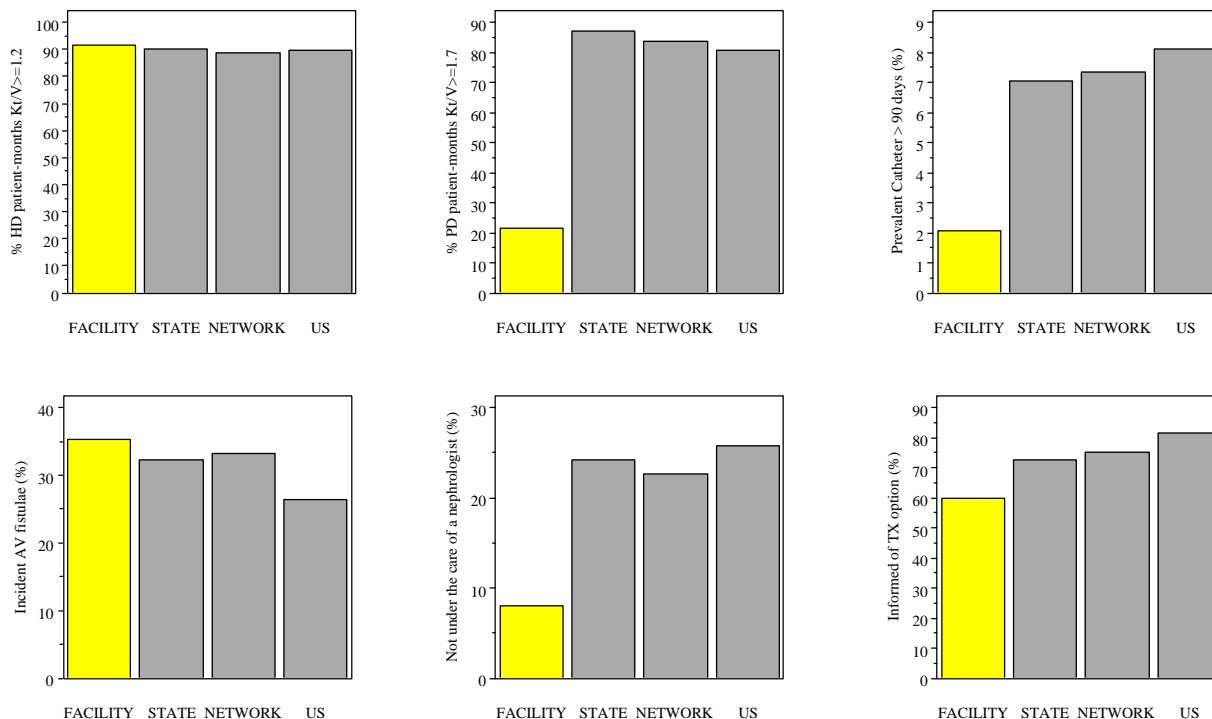


Practice Patterns (Tables 6 and 7):

- Among the 100 ESA-treated dialysis patients included in the analysis in 2013, the average hemoglobin calculated is 10.5 g/dL, compared to 10.5 g/dL in your State, 10.6 g/dL in your Network, and 10.5 g/dL nationally.
- Among the 105 HD patients in this facility included in the analysis in 2013, 99% had URR above the KDOQI minimum value for URR (65%), compared to 99% in your State, 99% in your Network, and 99% nationally.
- In 2013, 92% of eligible HD patient-months had a Kt/V ≥ 1.2 , compared to 90% in your State, 89% in your Network, and 90% nationally.
- In 2013, 21% of eligible PD patient-months had a Kt/V ≥ 1.7 , compared to 87% in your State, 84% in your Network, and 81% nationally.
- At this facility in 2013, an average of 35% of incident patients had arteriovenous (AV) fistulae in place, compared to 32% in your State, 33% in your Network, and 26% nationally.
- Of the prevalent patients receiving hemodialysis treatment at this facility in 2013, 2% had a catheter which had been in place for at least 90 days as their only vascular access, compared to 7% in your State, 7% in your Network, and 8% nationally.

Patient Characteristics (Tables 9 and 10):

- Among the 50 patients with Medical Evidence Forms (CMS-2728) indicating treatment at this facility during 2013:
 - 8% of these patients were not under the care of a nephrologist before starting dialysis, compared to 24% in your State, 23% in your Network, and 26% nationally.
 - 60% of these patients were informed of their transplant options, compared to 72% in your State, 75% in your Network, and 82% nationally.
- Among the patients treated at this facility on December 31, 2013, 10% were treated in a nursing home during the year, compared to 15% nationally.



Prepared by
 The University of Michigan Kidney Epidemiology and Cost Center (UM-KECC)
 under contract with the Centers for Medicare & Medicaid Services

2014 Dialysis Facility Report

NKC RENTON KIDNEY CENTER State: WA Network: 16 CCN: 502508

TABLE 1: Mortality Summary for All Dialysis Patients (2010-13) & New Dialysis Patients (2010-12)*¹

Measure Name	This Facility					Regional Averages* ² , per Year, 2010-2013		
	2010	2011	2012	2013	2010-2013	State	Network	U.S.
All Patients: Death Rates								
1a Patients (n=number)	158	171	173	175	677 ^{*9}	101.0	82.0	93.7
1b Patient-years (PY) at risk (n)	114.7	120.3	130.0	129.0	494.0 ^{*9}	71.2	57.9	63.6
1c Deaths (n)	15	20	20	19	74 ^{*9}	13.2	10.6	11.5
1d Expected deaths (n)	20.3	21.3	23.7	22.5	87.8 ^{*9}	13.8	11.3	11.5
All Patients: Categories of Death								
1e Withdrawal from dialysis prior to death (% of 1c)	33.3	35.0	30.0	42.1	35.1	40.4	41.9	25.7
1f Death due to: Infections (% of 1c)	20.0	15.0	20.0	31.6	21.6	14.7	14.8	13.8
Cardiac causes (% of 1c)	53.3	50.0	45.0	42.1	47.3	39.1	42.0	46.0
1g Dialysis unrelated deaths ^{*3} (n; excluded from SMR)	0	0	0	0	0 ^{*9}	0.1	0.1	0.1
All Patients: Standardized Mortality Ratio (SMR)								
1h SMR ^{*5}	0.74	0.94	0.84	0.84	0.84	0.96	0.93	1.00
1i P-value ^{*6}	0.286	0.881	0.524	0.541	0.149	n/a	n/a	n/a
1j Confidence interval for SMR ^{*7}								
High (97.5% limit)	1.22	1.45	1.30	1.32	1.06	n/a	n/a	n/a
Low (2.5% limit)	0.41	0.57	0.52	0.51	0.66	n/a	n/a	n/a
1k SMR percentiles for this facility (i.e., percent of facilities with lower mortality rates) ^{*8}								
In this State	22	49	38	43	30	n/a	n/a	n/a
In this Network	29	52	47	44	36	n/a	n/a	n/a
In the U.S.	24	44	36	35	25	n/a	n/a	n/a
New Patients: First Year Death Rates								
1l New patients (n=number)	30	38	39		107 ^{*9}	21.2	17.9	18.0
1m Patient-years (PY) at risk (n)	25.0	36.2	34.7		95.8 ^{*9}	18.7	15.8	15.6
1n Deaths (n)	9	4	6		19 ^{*9}	4.0	3.3	3.8
1o Expected deaths (n)	4.6	6.8	6.4		17.9 ^{*9}	4.6	4.0	3.8
New Patients: Categories of Deaths								
1p Withdrawal from dialysis prior to death (% of 1n)	44.4	75.0	33.3		47.4	43.7	44.0	27.9
1q Death due to: Infections (% of 1n)	22.2	25.0	16.7		21.1	13.0	13.6	12.8
Cardiac causes (% of 1r)	44.4	25.0	66.7		47.4	36.4	39.6	41.6
New Patients: First Year Standardized Mortality Ratio (SMR)								
1r SMR ^{*5}	1.94	0.59	0.93		1.06	0.86	0.84	1.00
1s P-value ^{*6}	0.093	0.378	0.999		0.855	n/a	n/a	n/a
1t Confidence interval for SMR ^{*7}								
High (97.5% limit)	3.69	1.50	2.03		1.66	n/a	n/a	n/a
Low (2.5% limit)	0.89	0.16	0.34		0.64	n/a	n/a	n/a
1u First Year SMR percentiles for this facility (i.e., percent of facilities with lower mortality rates) ^{*8}								
In this State	95	38	59		72	n/a	n/a	n/a
In this Network	93	35	62		74	n/a	n/a	n/a
In the U.S.	89	27	50		59	n/a	n/a	n/a

n/a = not applicable

[*1] See Guide, Section IV.

[*2] Values are shown for the average facility, annualized.

[*3] Defined as deaths due to street drugs and accidents unrelated to treatment.

[*4] Not shown if fewer than 3 expected deaths.

[*5] Calculated as a ratio of deaths to expected deaths (1c to 1d for all patients, 1n to 1o for new patients).

[*6] A p-value less than 0.05 indicates that the difference between the actual and expected mortality is probably real and is not due to random chance alone, while a p-value greater than or equal to 0.05 indicates that the difference could plausibly be due to random chance.

[*7] The confidence interval range represents uncertainty in the value of the SMR due to random variation.

[*8] All facilities are included in ranking, regardless of the number of expected deaths.

[*9] Sum of 4 years (all patients) or 3 years (new patients) used for calculations; should not be compared to regional averages.

2014 Dialysis Facility Report

NKC RENTON KIDNEY CENTER State: WA Network: 16 CCN: 502508

TABLE 2: Hospitalization Summary for Medicare Dialysis Patients^{*1}, 2010-2013

Measure Name	This Facility					Regional Averages ^{*2} , per Year, 2010-2013		
	2010	2011	2012	2013	2010-2013	State	Network	U.S.
Medicare Dialysis Patients								
2a Medicare dialysis patients (n)	127	148	140	136	551 ^{*3}	81.7	65.1	73.7
2b Patient-years (PY) at risk (n)	88.6	101.4	106.9	100.3	397.2 ^{*3}	54.1	42.4	46.1
Days Hospitalized Statistics								
2c Total days hospitalized (n)	668	852	845	679	3044 ^{*3}	517.0	392.4	625.7
2d Expected total days hospitalized (n)	1232.0	1372.2	1414.2	1246.4	5264.9 ^{*3}	746.3	578.2	626.9
2e Standardized Hospitalization Ratio (Days) ^{*4}	0.54	0.62	0.60	0.54	0.58	0.69	0.68	1.00
2f P-value ^{*5}	0.158	0.201	0.155	0.107	0.101	n/a	n/a	n/a
2g Confidence interval for SHR (Days) ^{*6}								
High (97.5% limit)	1.26	1.27	1.20	1.13	1.11	n/a	n/a	n/a
Low (2.5% limit)	0.24	0.32	0.32	0.28	0.32	n/a	n/a	n/a
2h Percentiles for this facility (i.e., % of facilities with lower hospitalization rates [days]) ^{*7}								
In this State	34	46	32	32	25	n/a	n/a	n/a
In this Network	35	51	40	31	33	n/a	n/a	n/a
In the U.S.	11	17	15	11	9	n/a	n/a	n/a
Admission Statistics								
2i Total admissions (n)	136	175	172	132	615 ^{*3}	93.1	70.6	88.1
2j Expected total admissions (n)	172.5	194.4	199.2	181.4	747.6 ^{*3}	105.0	81.6	88.2
2k Standardized Hospitalization Ratio (Admissions) ^{*4}	0.79	0.90	0.86	0.73	0.82	0.89	0.87	1.00
2l P-value ^{*5}	0.425	0.738	0.586	0.251	0.432	n/a	n/a	n/a
2m Confidence interval for SHR (Admissions) ^{*6}								
High (97.5% limit)	1.36	1.48	1.38	1.23	1.29	n/a	n/a	n/a
Low (2.5% limit)	0.48	0.57	0.57	0.46	0.55	n/a	n/a	n/a
2n Percentiles for this facility (i.e., % of facilities with lower hospitalization rates [admissions]) ^{*7}								
In this State	36	60	43	28	33	n/a	n/a	n/a
In this Network	39	62	51	37	41	n/a	n/a	n/a
In the U.S.	25	41	35	18	26	n/a	n/a	n/a
2o Diagnoses associated with hospitalization (% of 2a) ^{*8}								
Septicemia	11.0	6.1	7.9	7.4	8.0	11.1	9.8	11.0
Acute myocardial infarction	4.7	2.7	2.9	4.4	3.6	4.4	4.3	4.2
Congestive heart failure	13.4	26.4	15.7	21.3	19.4	21.7	20.3	23.3
Cardiac dysrhythmia	11.0	16.2	15.7	12.5	14.0	16.6	15.2	15.3
Cardiac arrest	2.4	3.4	3.6	4.4	3.4	1.9	1.7	1.8
2p One day admissions (% of 2i)	25.7	21.1	25.0	15.9	22.1	17.5	17.2	13.2
2q Average length of stay (days per admission; 2c/2i)	4.9	4.9	4.9	5.1	4.9	5.6	5.6	7.1
2r Readmissions within 30 days (n) ^{*9}	42	59	64	28	193 ^{*3}	26.7	19.1	27.1
2s Admissions that result in readmission within 30 days (% of 2i) ^{*9}	30.9	33.7	37.2	21.2	31.4	28.7	27.0	30.7

(continued)

2014 Dialysis Facility Report

NKC RENTON KIDNEY CENTER State: WA Network: 16 CCN: 502508

TABLE 2 (cont.): Hospitalization Summary for Medicare Dialysis Patients^{*1}, 2010-2013

Measure Name	This Facility					Regional Averages ^{*2} , per Year, 2010-2013		
	2010	2011	2012	2013	2010-2013	State	Network	U.S.
Emergency Department (ED) Statistics								
2t Total ED visits (n)	212	254	283	229	978 ^{*3}	160.0	122.5	138.8
2u Expected total ED visits (n)	258	295	310	295	1158 ^{*3}	165.0	128.8	139.2
2v Standardized Hospitalization Ratio (ED) ^{*4}	0.82	0.86	0.91	0.78	0.84	0.97	0.95	1.00
2w P-value ^{*5}	0.530	0.623	0.785	0.328	0.492	n/a	n/a	n/a
2x Confidence interval for SHR (ED) ^{*6}								
High (97.5% limit)	1.41	1.42	1.45	1.24	1.30	n/a	n/a	n/a
Low (2.5% limit)	0.52	0.56	0.61	0.52	0.58	n/a	n/a	n/a
2y Percentiles for this facility (i.e., % of facilities with lower hospitalization rates [ED]) ^{*7}								
In this State	31	38	44	24	29	n/a	n/a	n/a
In this Network	34	41	45	26	32	n/a	n/a	n/a
In the U.S.	27	33	40	21	27	n/a	n/a	n/a
2z Patients with ED visit (% of 2a)	57.5	52.0	67.1	65.4	60.4	62.7	61.9	61.2
2aa ED visits that result in hospitalization (% of 2t)	45.8	52.0	47.7	46.7	48.2	43.8	41.2	49.2
2ab Admissions that originate in the ED (% of 2i)	71.3	75.4	78.5	81.1	76.6	75.2	71.5	77.6

n/a = not applicable.

[*1] Based on patients with Medicare as primary insurer; see *Guide, Section V*.

[*2] Values are shown for the average facility, annualized.

[*3] Sum of 4 years used for calculations; should not be compared to regional averages.

[*4] Standardized Hospitalization Ratio calculated as ratio of actual to expected events (2c/2d for days, 2i/2j for admissions, and 2t/2u for ED visits); not shown if there are less than 5 patient years at risk.

[*5] A p-value less than 0.05 indicates that the difference between the actual and expected hospitalization/ED event is probably real and is not due to random chance alone, while a p-value greater than or equal to 0.05 indicates that the difference could plausibly be due to random chance.

[*6] The confidence interval range represents uncertainty in the value of the Standardized Hospitalization Ratio (SHR) due to random variation.

[*7] All facilities are included in ranking, regardless of the number of patient years at risk.

[*8] Includes diagnoses present at admission and diagnoses added during the hospital stay.

[*9] This value may be an underestimate since readmissions discharged after December 31, 2013 are not included.

2014 Dialysis Facility Report

NKC RENTON KIDNEY CENTER State: WA Network: 16 CCN: 502508

TABLE 3: Transplantation Summary for Dialysis Patients under Age 70^{*1}, 2010-2013

Measure Name	This Facility					Regional Averages ^{*2} , per Year, 2010-2013		
	2010	2011	2012	2013	2010-2013	State	Network	U.S.
3a Eligible patients (n)	104	107	107	108	426 ^{*10}	68.8	56.2	64.4
3b Transplants (n)	5	6	4	6	21 ^{*10}	3.1	2.4	2.1
3c Donor type (sums to 3b ^{*3})								
Living donor (n)	2	1	1	1	5 ^{*10}	0.9	0.8	0.6
Deceased donor (n)	3	5	3	5	16 ^{*10}	2.3	1.7	1.5
Patients who have not Previously Received a Transplant								
3d Eligible patients (n)	99	103	103	104	409 ^{*10}	62.4	50.7	58.0
3e Patient years (PY) at risk (n)	68.6	68.8	71.3	71.6	280.4 ^{*10}	44.0	35.9	39.9
3f First transplants ^{*4} (n)	5	6	4	6	21 ^{*10}	2.8	2.1	1.8
3g Expected first transplants (n)	3.2	3.0	2.9	3.0	12.2 ^{*10}	2.0	1.6	1.8
Standardized 1st Transplantation Ratio (STR)^{*5}								
3h STR ^{*6}	1.73	1.40	1.30	1.00
3i P-value ^{*7}	0.026	n/a	n/a	n/a
3j Confidence interval for STR ^{*8}								
High (97.5% limit)	2.64	n/a	n/a	n/a
Low (2.5% limit)	1.07	n/a	n/a	n/a
3k STR percentiles for this facility (i.e., % of facilities with lower transplantation rates) ^{*9}								
In this State	73	n/a	n/a	n/a
In this Network	76	n/a	n/a	n/a
In the U.S.	81	n/a	n/a	n/a

TABLE 4: Waitlist Summary for Dialysis Patients under Age 70 Treated on December 31st of Each Year^{*1}, 2010-2013

Measure Name	This Facility				Regional Averages ^{*2} , 2013		
	2010	2011	2012	2013	State	Network	U.S.
4a Eligible patients on 12/31 (n)	74	74	77	86	54.6	46.1	47.6
4b Patients on the waitlist (% of 4a)	21.6	10.8	24.7	25.6	22.7	20.4	24.5
4c P-value (compared to U.S. value) ^{*11}	0.343	<0.01	0.522	0.452	n/a	n/a	n/a
4d Patients on the waitlist by subgroup (%) ^{*12}							
Age < 40	44.4	14.3	33.3	50.0	37.9	30.9	36.7
Age 40-69	18.5	10.4	23.5	23.8	20.2	18.7	22.9
Male	17.8	10.6	29.2	22.9	22.4	20.6	25.6
Female	27.6	11.1	17.2	28.9	23.1	20.2	23.1
African American	28.0	16.7	22.7	23.1	23.3	20.8	22.8
Asian/Pacific Islander	15.0	8.7	27.3	32.0	27.7	26.9	36.9
Native American	0.0	0.0	0.0	0.0	13.5	16.4	19.2
White, Hispanic	28.6	16.7	20.0	33.3	22.1	19.4	27.9
White, non-Hispanic	19.0	5.0	25.9	22.2	21.9	19.9	23.3
Other/unknown race	28.6	20.0	29.4
Diabetes	17.2	6.7	25.9	17.2	16.3	14.7	19.9
Non-diabetes	24.4	13.6	24.0	29.8	28.0	25.1	28.2
Previous kidney transplant	50.0	50.0	66.7	100	42.2	36.6	45.1
No previous kidney transplant	20.0	9.7	23.0	22.0	20.6	18.7	22.6
< 2 years since start of ESRD	3.4	3.3	21.6	16.7	16.5	15.3	16.6
2-4 years since start of ESRD	44.0	14.3	30.0	26.9	26.8	24.2	29.0
5+ years since start of ESRD	20.0	17.4	25.0	37.5	25.9	23.0	28.8

n/a = not applicable [*1] See *Guide, Sections VI and VII*. [*2] Values are shown for the average facility. [*3] Values may not sum to 3b due to unknown donor type. [*4] Among first transplants that occurred after the start of dialysis from 2010-2013, 3.8% of transplants in the U.S. were not included because the transplant occurred fewer than 90 days after the start of ESRD and 1.3% were not included because the patient was not assigned to a facility at time of transplant. [*5] This section is calculated for the 4-year period only and not reported if there are fewer than 3 expected transplants. [*6] Standardized 1st Transplantation Ratio calculated as ratio of actual (3f) to expected (3g) transplants. [*7] A p-value less than 0.05 indicates that the difference between the actual and expected transplants is probably real and is not due to random chance, while a p-value greater than or equal to 0.05 indicates that the difference is plausibly due to random chance. [*8] The confidence interval range represents uncertainty in the value of the STR due to random variation. [*9] All facilities are included in ranking, regardless of the number of expected transplants. [*10] Sum of 4 years used for calculations; should not be compared to regional averages. [*11] Facility waitlist percentage is compared to the U.S. waitlist percentage for that year: 24.4% (2010), 24.3% (2011), 24.4% (2012), 24.5% (2013). A p-value greater than 0.05 indicates that the difference between percent of patients waitlisted at the facility and national percentage is plausibly due to random chance. [*12] A missing value indicates that there were no eligible patients in the subgroup.

2014 Dialysis Facility Report

NKC RENTON KIDNEY CENTER State: WA Network: 16 CCN: 502508

TABLE 5: Influenza Vaccination Summary for Medicare Dialysis Patients Treated on December 31st of Each Year^{*1}, Flu Seasons August 2010-December 2013

Measure Name	This Facility				Regional Averages		
	2010	2011	2012	2013	State	Network	U.S.
2013							
5a Eligible patients on 12/31 (n)	95	108	102	96	56.8	46.4	48.5
5b Patients vaccinated between Aug. 1 and Dec. 31 (% of 5a)	74.7	71.3	84.3	86.5	73.8	71.6	71.0
5c P-value ^{*3} (for 5b compared to U.S. value ^{*4})	0.099	0.359	<0.01	<0.01	n/a	n/a	n/a
2012							
5d Patients vaccinated between Aug 1 and Mar 31 of following year (% of 5a)	75.8	71.3	86.3	n/a	74.6	71.4	71.1
5e P-value ^{*3} (for 5d compared to U.S. value ^{*5})	0.080	0.409	<0.01	n/a	n/a	n/a	n/a
2013							
5f Patients vaccinated between Aug 1 and Dec 31 by subgroup (%) ^{*6}							
Age < 18	50.0	50.0	51.1
Age 18-39	80.0	40.0	75.0	0.0	69.9	68.9	67.8
Age 40-64	76.3	66.7	76.5	88.6	74.0	72.2	71.0
Age 65-74	69.7	80.5	83.9	82.8	73.1	70.5	70.9
Age 75+	78.9	69.0	93.9	90.3	75.7	73.2	72.3
Male	77.6	75.9	82.1	91.7	73.4	71.1	71.0
Female	71.7	66.0	87.0	81.3	74.2	72.4	71.1
African American	64.0	74.1	88.0	87.5	67.9	67.7	68.4
Asian/Pacific Islander	84.0	74.3	90.9	86.1	80.4	80.0	75.6
Native American	100	100	100	0.0	71.4	61.5	75.6
White	75.0	68.2	76.7	88.6	73.5	71.5	72.2
Other/unknown race	.	0.0	.	.	83.3	76.5	71.2
Hispanic	77.8	66.7	85.7	80.0	83.4	82.3	74.1
< 1 year since start of ESRD	38.5	78.3	50.0	63.6	61.2	59.5	57.8
1-2 years since start of ESRD	80.6	65.6	88.2	82.1	74.7	71.8	70.6
3+ years since start of ESRD	80.4	71.7	87.9	93.0	76.9	75.1	74.7

n/a = not applicable

[*1] Based on patients with Medicare as primary insurer; see *Guide, Section VIII*.

[*2] Values are shown for the average facility.

[*3] A p-value greater than or equal to 0.05 indicates that the difference between percent of patients vaccinated at the facility and national percentage is plausibly due to random chance.

[*4] Compared to the U.S. value for that year and time period (8/1-12/31): 68.1% (2010), 69.2% (2011), 70.1% (2012), 71.0% (2013).

[*5] Compared to the U.S. value for that year and time period (8/1-3/31): 68.7% (2010), 69.8% (2011), 71.1% (2012).

[*6] A missing value indicates that there were no eligible patients in the subgroup.

TABLE 6: Facility Modality, Hemoglobin, and Dialysis Adequacy for Medicare Dialysis Patients^{*1}, 2010-2013

Measure Name	This Facility				Regional Averages ^{*2} , 2013		
	2010	2011	2012	2013	State	Network	U.S.
Modality (among all dialysis patients with ESRD for 90+ days and 1+ claim at this facility)							
6a Patients treated during year (n)	178	206	242	205	99.1	77.2	74.8
6b Patient-months treated during year (n) ^{*3}	1186	1295	1506	1347	729.8	561.2	562.5
6c Modality (% of 6b; sums to 100%)							
Hemodialysis	99.9	99.8	98.9	98.6	83.9	84.4	90.9
CAPD/CCPD	0.0	0.0	0.5	1.0	8.3	10.9	8.0
Other dialysis ^{*4}	0.1	0.2	0.5	0.4	7.8	4.7	1.1
6d Percent of patient-months prescribed iron by modality ^{*5}							
Hemodialysis	61.8	50.4	44.0	40.4	55.7	56.8	60.7
CAPD/CCPD	.	.	0.0	23.1	22.0	19.4	24.2
Hemoglobin (among ESA-treated dialysis patients with ESRD for 90+ days and 4+ hemoglobin claims at this facility)							
6e Eligible patients (n)	98	104	106	100	52.8	40.5	44.2
6f Average hemoglobin (g/dL)	11.6	11.0	10.6	10.5	10.5	10.6	10.5
6g Hemoglobin categories (% of 6e; sums to 100%)							
< 10 g/dL	1.0	2.9	7.5	10.0	11.7	10.5	12.3
10-<11 g/dL	4.1	36.5	72.6	82.0	70.7	69.2	67.9
11-<12 g/dL	81.6	57.7	19.8	8.0	17.3	19.9	19.5
> 12 g/dL	13.3	2.9	0.0	0.0	0.3	0.3	0.3

(continued)

2014 Dialysis Facility Report

NKC RENTON KIDNEY CENTER State: WA Network: 16 CCN: 502508

TABLE 6 (cont.): Facility Modality, Hemoglobin, and Dialysis Adequacy for Medicare Dialysis Patients^{*1}, 2010-2013

Measure Name	This Facility				Regional Averages ^{*2} , 2013		
	2010	2011	2012	2013	State	Network	U.S.
Hemoglobin (among ESA-treated dialysis patients with ESRD for 90+ days and 4+ hemoglobin claims at this facility) (cont.)							
6h Eligible hemodialysis (HD) patients (n) ^{*6}	98	104	106	100	49.2	37.4	41.6
6i Hemoglobin categories among HD pts (% of 6h; sums to 100%)							
< 10 g/dL	1.0	2.9	7.5	10.0	11.9	10.4	12.0
10-<11 g/dL	4.1	36.5	72.6	82.0	70.9	69.4	68.0
11-12 g/dL	81.6	57.7	19.8	8.0	16.9	19.9	19.6
> 12 g/dL	13.3	2.9	0.0	0.0	0.3	0.3	0.3
6j Eligible peritoneal dialysis (PD) patients (n) ^{*6}	0	0	0	1	4.4	4.0	3.2
6k Hemoglobin categories among PD pts (% of 6j; sums to 100%)							
< 10 g/dL	.	.	.	0.0	18.1	20.2	23.6
10-<11 g/dL	.	.	.	0.0	59.3	58.6	57.0
11-12 g/dL	.	.	.	100	21.8	20.6	18.5
> 12 g/dL	.	.	.	0.0	0.8	0.7	0.9
Standardized Transfusion Ratio (STrR)							
6l Adult Medicare patients (n)	122	106	103	113	72.7	61.9	62.5
6m Patient years (PY) at risk (n)	76	68	70	74	44.9	37.9	38.6
6n Total transfusions (n)	12	19	27	21	15.1	13.0	16.7
6o Expected total transfusions (n)	32.4	30.4	32.6	32.8	19.8	16.6	16.9
6p Standardized Transfusion Ratio ^{*11}	0.37	0.63	0.83	0.64	0.76	0.78	1.00
Upper Confidence Limit (97.5%)	1.09	1.52	1.72	1.43	n/a	n/a	n/a
Lower Confidence Limit (2.5%)	0.14	0.28	0.44	0.32	n/a	n/a	n/a
6q P-value ^{*12}	0.072	0.326	0.679	0.302	n/a	n/a	n/a
Urea Reduction Ratio (URR; among HD patients with ESRD for 183+ days and 4+ URR claims at this facility)^{*7}							
6r Eligible patients (n)	103	105	125	105	50.7	39.2	43.3
6s URR 65+ (% of 6r; meets a KDOQI guideline)	99.0	98.1	99.2	99.0	98.7	98.6	98.7
Adult Kt/V (K = dialyzer clearance of urea; t = dialysis time; V = patient's total body water)^{*8,*9}							
6t Eligible adult HD patients (n)	136	201	221	177	83.4	66.0	68.2
6u Eligible adult HD patient-months (n) ^{*3}	557	1211	1337	1235	578.7	450.4	494.0
6v Adult HD: Average Kt/V ^{*10}	1.7	1.7	1.7	1.7	1.7	1.7	1.6
6w Kt/V categories among adult HD patients (% of 6u; sums to 100%)							
<1.2	3.8	3.1	2.2	2.4	2.5	2.6	2.4
1.2-<1.4	7.4	11.1	6.9	8.5	9.9	10.5	13.2
1.4-<1.6	22.1	22.7	23.6	22.7	23.5	24.5	26.9
1.6-<1.8	34.3	31.1	29.5	28.2	25.8	26.1	25.9
>= 1.8	26.4	25.7	32.0	32.2	30.8	27.7	23.8
Missing/Out of range/Not performed/Expired	6.1	6.3	5.8	6.0	7.6	8.6	7.9
6x Adult HD: Kt/V >=1.2 (% of 6u) ^{*10}	90.1	90.7	92.0	91.6	90.0	88.8	89.7
6y Eligible adult peritoneal dialysis (PD) patients (n)	0	0	8	13	8.4	8.2	5.9
6z Eligible adult PD patient-months (n) ^{*3}	0	0	14	14	62.0	62.1	45.0
6aa Adult PD: Average Kt/V ^{*10}	.	.	1.7	2.1	2.3	2.3	2.2
6ab Kt/V categories among adult PD patients (% of 6z; sums to 100%)							
<1.7	.	.	50.0	0.0	5.6	6.2	7.9
1.7-<1.9	.	.	7.1	7.1	12.1	12.1	16.5
1.9-<2.2	.	.	28.6	7.1	27.4	25.0	25.2
2.2-<2.5	.	.	7.1	7.1	20.8	19.3	16.8
>=2.5	.	.	0.0	0.0	27.0	27.5	22.2
Missing/Out of range/Not performed/Expired	.	.	7.1	78.6	7.2	10.0	11.3
6ac Adult PD: Kt/V >=1.7 (% of 6z) ^{*10}	.	.	42.9	21.4	87.2	83.8	80.8

n/a = not applicable

[*1] See *Guide, Section IX*. [*2] Values are shown for the average facility. [*3] Patients may be counted up to 12 times per year.

[*4] Other dialysis includes patients who switch between HD and PD during the month and patients for whom modality is unknown or missing.

[*5] Percent of patient months represented by the corresponding modality percent in 6c. [*6] Sum of eligible HD and PD patients may not add to 6e.

[*7] Claims identified as having 4 or more dialysis sessions per week were excluded from the URR calculations. Among eligible claims in the US, less than 2% were excluded due to frequent dialysis in 2010-2013.

[*8] Claims identified as having 2 or fewer, or 4 or more adult dialysis sessions per week were excluded from the Kt/V calculations.

[*9] Collection of the measures calculated in this section began in July 2010. Includes patients with Medicare as primary insurer and based on the value code D5: Result of last Kt/V.

[*10] Values calculated based only on Kt/V values reported in range.

[*11] Calculated as a ratio of observed transfusions to expected transfusions (6n to 6o); not shown if there are fewer than 10 patient-years at risk for transfusions.

[*12] A p-value less than 0.05 indicates that the difference between the actual and expected transfusion is probably real and is not due to random chance alone, while a p-value greater than or equal to 0.05 indicates that the difference could plausibly be due to random chance.

2014 Dialysis Facility Report

NKC RENTON KIDNEY CENTER State: WA Network: 16 CCN: 502508

TABLE 7: Vascular Access Information ^{*1}, CMS Fistula First (Jan. 2010 - Apr. 2012) and CROWNWeb (May 2012 - Dec. 2013)

Measure Name	This Facility				Regional Averages ^{*2} , 2013		
	2010	2011	2012	2013	State	Network	U.S.
Vascular Access							
7a Prevalent hemodialysis patient-months ^{*3}	1490	1607	1652	1657	834.9	698.8	734.5
7b Vascular access type in use (% of 7a; sums to 100%)							
Arteriovenous fistula	66.2	62.2	65.7	69.9	70.2	68.9	61.8
Arteriovenous graft	18.5	22.9	22.6	19.7	12.8	12.8	19.0
Catheter	15.3	14.9	11.6	10.4	16.8	18.2	19.1
Other/Missing	0.0	0.0	0.0	0.0	0.2	0.1	0.1
7c Arteriovenous fistulae in place (% of 7a) ^{*4}	73.2	68.5	69.3	70.2	72.9	72.5	65.2
7d Catheter only >= 90 days (% of 7a) ^{*5}	3.3	1.9	2.2	2.1	7.0	7.3	8.1
Vascular Access at First Treatment							
7e Incident hemodialysis patients (n)	19	31	23	34	14.1	12.3	10.7
7f Vascular access type in use (% of 7e; sums to 100%)							
Arteriovenous fistula	21.1	16.1	34.8	35.3	28.1	26.7	19.3
Arteriovenous graft	21.1	6.5	0.0	5.9	4.6	4.0	3.4
Catheter	57.9	77.4	65.2	58.8	67.3	69.2	77.2
Other/Missing	0.0	0.0	0.0	0.0	0.1	0.0	0.1
7g Arteriovenous fistulae in place (% of 7e) ^{*4}	42.1	25.8	43.5	35.3	32.3	33.3	26.3

TABLE 8: Dialysis Access Type and Access-Related Infection Summary for Medicare Dialysis Patients ^{*1}, 2010 - 2013

Measure Name	This Facility				Regional Averages ^{*2} , 2013		
	2010	2011	2012	2013	State	Network	U.S.
Vascular Access ^{*7}							
8a Eligible hemodialysis patient-months (n)	617	1376	1535	1371	660.8	528.9	559.7
8b Hemodialysis vascular access type (% of 8a)							
Vascular catheter	10.7	10.9	9.1	8.5	14.4	15.5	16.6
Arteriovenous graft	4.4	4.6	15.4	20.3	13.6	13.1	20.5
Arteriovenous fistula only	51.1	52.3	65.3	71.2	71.9	71.3	62.8
Other (>1) ^{*8}	33.9	32.2	10.2	0.0	0.0	0.1	0.1
8c Vascular catheter reported >3 consecutive months	3.2	4.1	3.3	3.4	8.9	9.8	10.8
Hemodialysis (HD)							
8d Eligible HD patients (n)	141	157	169	170	85.7	68.4	72.6
8e Eligible HD patient-months ^{*3}	1160	1318	1398	1330	657.1	516.6	566.2
8f HD infection rate per 100 hemodialysis patient-months ^{*9}	3.71	3.57	2.86	2.33	1.86	1.79	1.77
8g P-value ^{*10} of 8f (compared to U.S. value) ^{*11}	0.104	0.018	0.065	0.079	n/a	n/a	n/a
Peritoneal Dialysis (PD)							
8h Eligible PD patients (n)	0	0	20	21	9.5	9.3	6.9
8i Eligible PD patient-months ^{*3}	0	0	27	25	67.2	68.3	50.5
8j PD catheter infection rate per 100 PD patient-months ^{*9}	.	.	3.70	4.00	2.56	2.62	2.90
8k P-value ^{*10} of 8j (compared to U.S. value) ^{*12}	.	.	0.571	0.520	n/a	n/a	n/a

n/a = not applicable

[*1] See *Guide, Section X* (Table 7) and *Section XI* (Table 8).

[*2] Values are shown for the average facility.

[*3] Patients may be counted up to 12 times per year.

[*4] Includes all patients with fistulae, regardless of whether or not they received their hemodialysis treatments using their fistulae.

[*5] Patients listed as graft or catheter may have had fistulae in place for future use, but they actually received their treatment through a graft or catheter.

[*6] Based on V modifiers including V5, V6, and V7 for catheter, graft, and fistula, respectively. Collection began July 2010.

[*7] Vascular access section includes adult patients only. Pediatric vascular access data can be found in the pediatric table.

[*8] Other includes patients with >1 access type; it does not include missing access type.

[*9] The ICD-9 infection code for HD patients is 996.62. The ICD-9 PD catheter infection code for PD patients is 996.68.

[*10] A p-value greater than or equal to 0.05 indicates the differences between the percent of patients with infection at the facility and national percentage is plausibly due to random chance.

[*11] Compared to U.S. value for that year: 3.02 (2010), 2.58 (2011), 2.22 (2012), and 1.77 (2013).

[*12] Compared to U.S. value for that year: 3.27 (2010), 3.13 (2011), 3.09 (2012), and 2.90 (2013).

2014 Dialysis Facility Report

NKC RENTON KIDNEY CENTER State: WA Network: 16 CCN: 502508

TABLE 9: Characteristics of New Dialysis Patients^{*1}, 2010-2013 (Form CMS-2728)

Measure Name		This Facility				Regional Averages ^{*2} , 2013		
		2010	2011	2012	2013	State	Network	U.S.
Patient Characteristics								
9a	Total number of patients with forms (n)	30	38	39	50	20.5	18.2	17.9
9b	Average age (years [0-95]) ^{*3}	63.3	62.4	58.6	59.6	62.7	62.7	63.4
9c	Female (% of 9a)	43.3	39.5	43.6	46.0	42.1	41.5	42.8
9d	Race (% of 9a; sums to 100%) ^{*4}							
	African-American	30.0	21.1	15.4	22.0	9.4	5.9	26.8
	Asian/Pacific Islander	40.0	23.7	35.9	32.0	10.3	7.1	4.8
	Native American	0.0	0.0	0.0	2.0	1.4	3.3	0.9
	White	30.0	55.3	48.7	44.0	78.5	83.5	67.4
	Other/Unknown/Missing	0.0	0.0	0.0	0.0	0.3	0.2	0.1
9e	Hispanic (% of 9a)	6.7	5.3	2.6	4.0	7.2	7.3	14.2
9f	Primary cause of ESRD (% of 9a; sums to 100%)							
	Diabetes	50.0	55.3	48.7	54.0	45.7	46.1	46.6
	Hypertension	26.7	23.7	17.9	18.0	20.6	19.8	30.6
	Primary glomerulonephritis	10.0	10.5	12.8	12.0	9.7	9.7	6.9
	Other/Missing	13.3	10.5	20.5	16.0	24.0	24.4	16.0
9g	Medical coverage (% of 9a; sums to 100%)							
	Employer group only	6.7	21.1	23.1	36.0	11.2	12.2	12.5
	Medicare only	30.0	13.2	17.9	30.0	29.8	28.8	28.6
	Medicaid only	23.3	7.9	17.9	10.0	10.5	9.5	10.7
	Medicare and Medicaid only	16.7	28.9	15.4	8.0	11.2	10.8	14.0
	Medicare and other	16.7	18.4	2.6	4.0	19.9	22.4	20.9
	Other/Unknown	0.0	0.0	15.4	8.0	11.9	10.0	6.3
	None	6.7	10.5	7.7	4.0	5.6	6.3	7.0
9h	Body Mass Index ^{*5}							
	Male	24.5	26.2	27.1	26.2	27.2	27.8	27.7
	Female	24.0	29.9	27.5	26.6	29.0	29.3	29.0
9i	Employment ^{*6}							
	Six months prior to ESRD treatment	7.7	26.7	45.0	37.0	26.4	24.8	21.1
	At first ESRD treatment	30.8	33.3	60.0	51.9	35.3	33.7	30.5
9j	Primary modality (% of 9a; sums to 100%)							
	Hemodialysis	100	92.1	76.9	78.0	90.0	87.7	90.5
	CAPD/CCPD	0.0	7.9	23.1	22.0	10.0	12.3	9.5
	Other/Unknown/Missing	0.0	0.0	0.0	0.0	0.0	0.0	0.0
9k	Number of incident hemodialysis patients (n)	30	35	30	39	18.4	15.9	16.2
9l	Access used at first outpatient dialysis (% of 9k; sums to 100%)							
	Arteriovenous fistula	16.7	25.7	23.3	30.8	24.5	24.7	16.9
	Arteriovenous graft	6.7	11.4	0.0	5.1	3.7	3.2	2.8
	Catheter	76.7	62.9	76.7	64.1	71.7	71.9	80.0
	Other/Unknown/Missing	0.0	0.0	0.0	0.0	0.1	0.2	0.3
9m	Arteriovenous fistula placed (% of 9k)	20.0	34.3	56.7	61.5	46.1	45.6	35.2
Average Lab Values Prior to Dialysis^{*3}								
9n	Hemoglobin (g/dL [3-18])	10.0	9.6	9.5	9.3	9.4	9.6	9.5
9o	Serum albumin (g/dL [0.8-6.0])	3.5	3.6	3.6	3.9	3.3	3.3	3.2

(continued)

2014 Dialysis Facility Report

NKC RENTON KIDNEY CENTER State: WA Network: 16 CCN: 502508

TABLE 9 (cont.): Characteristics of New Dialysis Patients^{*1}, 2010-2013 (Form CMS-2728)

Measure Name		2010	This Facility			Regional Averages ^{*2} , 2013		
			2011	2012	2013	State	Network	U.S.
Average Lab Values Prior to Dialysis ^{*3}								
9p	Serum creatinine (mg/dL [2-33])	7.8	6.9	6.8	7.8	6.6	6.3	6.4
9q	GFR (mL/min [0-60])	9.2	9.3	9.6	8.3	10.1	10.6	10.9
Care Prior to ESRD Therapy								
9r	Received ESA prior to ESRD (% of 9a)	26.7	31.6	38.5	44.0	22.2	21.1	15.0
9s	Pre-ESRD nephrologist care (% of 9a; sums to 100%)							
	No	36.7	23.7	17.9	8.0	24.2	22.7	25.8
	Yes, < 6 months	26.7	23.7	25.6	30.0	16.5	15.9	13.5
	Yes, 6-12 months	10.0	13.2	10.3	16.0	15.8	17.9	18.7
	Yes, > 12 months	26.7	36.8	43.6	46.0	40.9	39.7	29.1
	Unknown/Missing	0.0	2.6	2.6	0.0	2.6	3.8	12.9
9t	Informed of transplant options (% of 9a)	33.3	60.5	61.5	60.0	72.4	75.2	81.7
9u	Patients not informed of transplant options (n)	20	15	15	20	5.2	4.1	2.7
9v	Reason not informed (% of 9u; may not sum to 100%)							
	Medically unfit	50.0	73.3	46.7	35.0	46.3	45.9	37.8
	Unsuitable due to age	5.0	6.7	6.7	15.0	12.2	16.5	26.2
	Psychologically unfit	10.0	6.7	0.0	5.0	5.6	3.9	3.7
	Patient declined information	0.0	0.0	0.0	0.0	1.3	1.5	1.8
	Patient has not been assessed	30.0	26.7	53.3	45.0	37.7	37.2	38.1
Comorbid Conditions								
9w	Pre-existing comorbidity (% yes of 9a)							
	Congestive heart failure	36.7	31.6	28.2	32.0	32.6	30.4	29.5
	Atherosclerotic heart disease ^{*7}	26.7	26.3	17.9	22.0	20.6	22.2	16.1
	Other cardiac disorder ^{*7}	6.7	7.9	10.3	14.0	18.0	17.4	19.5
	CVD, CVA, TIA	13.3	10.5	7.7	12.0	9.0	9.0	8.7
	Peripheral vascular disease	20.0	23.7	20.5	16.0	12.1	13.6	11.5
	History of hypertension	76.7	86.8	87.2	90.0	87.7	86.4	87.6
	Diabetes ^{*7}	56.7	63.2	66.7	66.0	57.4	58.5	61.3
	Diabetes on insulin	43.3	50.0	51.3	58.0	43.0	42.4	40.4
	COPD	3.3	5.3	5.1	10.0	9.9	10.5	9.6
	Current smoker	10.0	7.9	10.3	10.0	9.4	9.1	6.3
	Cancer	16.7	2.6	5.1	6.0	8.6	8.2	7.1
	Alcohol dependence	0.0	0.0	0.0	0.0	1.3	1.6	1.5
	Drug dependence	10.0	2.6	2.6	2.0	3.4	2.4	1.2
	Inability to ambulate	0.0	2.6	2.6	0.0	4.4	4.6	6.9
	Inability to transfer	0.0	0.0	0.0	0.0	1.7	1.6	3.8
9x	Average number of comorbid conditions	3.2	3.2	3.2	3.4	3.2	3.2	3.1

n/a= not applicable

[*1] See *Guide, Section XII*.

[*2] Values are shown for the average facility.

[*3] For continuous variables, summaries include only responses in range indicated in brackets.

[*4] 'Asian' includes Indian sub-continent. 'Native American' includes Alaskan Native. 'White' includes Middle Eastern and Arabian.

[*5] The median BMI is computed for adult patients at least 20 years old.

[*6] Full-time, part-time, or student (% of 18-60 year olds).

[*7] 'Atherosclerotic heart disease' includes ischemic heart disease (coronary artery disease) and myocardial infarction. 'Other cardiac disorder' includes cardiac arrest, cardiac dysrhythmia, and pericarditis. 'Diabetes' includes patients with diabetes as the primary cause of ESRD.

2014 Dialysis Facility Report

NKC RENTON KIDNEY CENTER State: WA Network: 16 CCN: 502508

TABLE 10: Summaries for All Dialysis Patients Treated as of December 31st of Each Year^{*1}, 2010-2013

Measure Name	This Facility				Regional Averages ^{*2} , 2013		
	2010	2011	2012	2013	State	Network	U.S.
10a Patients treated on 12/31 (n)	120	124	127	128	76.4	65.8	66.6
10b Average age (years)	62.3	64.7	64.2	62.7	61.3	61.3	61.6
10c Age (% of 10a; sums to 100%)							
< 18	0.0	0.0	0.0	0.0	0.4	0.3	0.3
18-64	49.2	41.1	45.7	50.8	54.6	54.3	55.1
65+	50.8	58.9	54.3	49.2	45.0	45.4	44.6
10d Female (% of 10a)	42.5	42.7	43.3	48.4	44.2	43.5	44.2
10e Race (% of 10a; sums to 100%) ^{*3}							
African American	26.7	24.2	22.0	24.2	12.1	8.7	36.7
Asian/Pacific Islander	27.5	33.1	36.2	35.9	13.5	9.7	5.4
Native American	0.8	0.8	0.8	1.6	1.8	3.6	1.3
White	45.0	41.1	40.9	38.3	72.2	77.7	55.8
Other/Unknown/Missing	0.0	0.8	0.0	0.0	0.3	0.3	0.7
10f Ethnicity (% of 10a; sums to 100%)							
Hispanic	7.5	8.1	7.1	7.0	10.1	9.9	16.7
Non-Hispanic	90.0	88.7	90.6	91.4	88.9	89.3	81.6
Unknown	2.5	3.2	2.4	1.6	1.0	0.8	1.8
10g Cause of ESRD (% of 10a; sums to 100%)							
Diabetes	46.7	46.8	44.1	40.6	44.8	43.9	44.5
Hypertension	23.3	24.2	26.8	23.4	18.4	18.2	28.9
Glomerulonephritis	17.5	16.9	18.9	21.1	14.7	15.3	10.8
Other/Unknown	12.5	12.1	10.2	14.8	21.0	21.6	14.0
Missing	0.0	0.0	0.0	0.0	1.1	1.1	1.7
10h Average duration of ESRD (years)	4.4	4.5	4.5	4.5	4.8	4.8	4.8
10i Years since start of ESRD (% of 10a; sums to 100%)							
< 1	17.5	22.6	10.2	18.0	16.6	17.1	16.2
1-2	21.7	15.3	25.2	9.4	18.0	18.3	17.0
2-3	13.3	15.3	11.0	23.4	15.1	14.1	13.8
3-6	26.7	27.4	33.1	26.6	25.6	26.2	27.0
6+	20.8	19.4	20.5	22.7	24.7	24.3	26.0
10j Nursing home patients (% of 10a) ^{*4}	8.3	4.0	4.7	10.2	15.0	13.8	14.7
10k Modality (% of 10a; sums to 100%)							
In-center hemodialysis	97.5	100	100	99.2	85.6	83.8	88.2
Home hemodialysis	0.8	0.0	0.0	0.0	3.5	2.8	1.9
Continuous ambulatory peritoneal dialysis	0.0	0.0	0.0	0.0	1.4	2.4	1.7
Continuous cycling peritoneal dialysis	0.0	0.0	0.0	0.8	9.2	10.5	7.8
Other modality ^{*5}	1.7	0.0	0.0	0.0	0.3	0.4	0.4

n/a = not applicable

[*1] See Guide, Section XIII.

[*2] Values are shown for the average facility.

[*3] 'Asian' includes Indian sub-continent. 'Native American' includes Alaskan Native. 'White' includes Middle Eastern and Arabian.

[*4] Includes patients who were also treated by a nursing facility at any time during the year. The source of nursing facility history of patients is the Nursing Home Minimum Dataset.

[*5] Other modality includes other dialysis, uncertain modality, and patients not on dialysis but still temporarily assigned to the facility (discontinued dialysis, recovered renal function, and lost to follow up).

2014 Dialysis Facility Report

NKC RENTON KIDNEY CENTER State: WA Network: 16 CCN: 502508

TABLE 11: Comorbidities Reported on Medicare Claims for Medicare Dialysis Patients Treated as of December 31st of Each Year^{*1}, 2010-2013

Measure Name	This Facility				Regional Averages ^{*2} , 2013		
	2010	2011	2012	2013	State	Network	U.S.
11a Medicare dialysis patients on 12/31 (n)	100	110	104	97	59.9	50.6	51.8
11b Comorbidity (% yes of 11a)							
Infections							
AIDS/HIV positive	2.0	0.9	0.0	1.0	0.7	0.5	1.8
Dialysis access-related	16.0	17.3	18.3	12.4	14.4	14.5	14.6
Hepatitis B	0.0	0.0	0.0	0.0	1.0	0.9	2.9
Hepatitis other	5.0	1.8	1.9	4.1	6.2	5.4	6.3
Metastatic	4.0	5.5	4.8	6.2	4.6	4.2	4.0
Pneumonia	6.0	7.3	5.8	1.0	6.1	5.9	5.8
Tuberculosis	0.0	0.9	0.0	0.0	0.6	0.5	0.6
Other	37.0	46.4	34.6	37.1	40.8	40.4	45.3
Cardiovascular							
Cardiac arrest	1.0	0.9	1.0	1.0	1.7	1.6	1.6
Cardiac dysrhythmia	22.0	35.5	23.1	16.5	34.7	34.7	36.8
Cerebrovascular disease	16.0	26.4	23.1	23.7	23.2	20.9	26.2
Congestive heart failure	31.0	45.5	35.6	38.1	46.0	45.6	51.0
Ischemic heart disease	32.0	39.1	32.7	30.9	41.1	42.0	49.2
Myocardial infarction	6.0	4.5	2.9	6.2	8.1	8.0	8.6
Peripheral vascular disease ^{*3}	49.0	47.3	40.4	35.1	37.9	36.3	42.9
Other							
Alcohol dependence	1.0	1.8	1.9	2.1	3.6	3.4	2.9
Anemia	3.0	2.7	1.9	2.1	4.6	4.9	8.8
Cancer	12.0	10.0	11.5	12.4	10.2	10.3	10.7
Chronic obstructive pulmonary disease	17.0	19.1	23.1	28.9	30.2	30.5	31.8
Diabetes	66.0	62.7	64.4	57.7	60.1	59.2	64.9
Drug dependence	2.0	5.5	2.9	7.2	4.8	4.6	2.4
Gastrointestinal tract bleeding	1.0	5.5	2.9	5.2	2.8	2.8	3.2
Hyperparathyroidism	90.0	95.5	98.1	96.9	91.1	88.1	89.0
11c Average number of comorbid conditions	4.2	4.8	4.3	4.3	4.7	4.7	5.1

n/a = not applicable

[*1] Based on patients with Medicare as primary insurer on 12/31 each year. See *Guide, Section XIV*.

[*2] Values are shown for the average facility.

[*3] Peripheral vascular disease includes venous, arterial and nonspecific peripheral vascular diseases.

TABLE 12: How Patients Were Assigned to This Facility and End of Year Patient Status^{*1}, 2010-2013

Measure Name	This Facility				Regional Averages ^{*2} , 2013		
	2010	2011	2012	2013	State	Network	U.S.
12a Number of patients placed in facility ^{*1} (n)	158	171	173	175	106.1	90.4	91.2
12b Initial patient placement for the year (% of 12a; sums to 100%)							
Continuing at facility on 01/01	65.2	70.2	71.7	72.6	69.6	69.7	70.6
Incident (new to ESRD)	25.3	19.9	15.6	18.9	18.4	18.7	18.1
Transferred into facility	9.5	9.9	12.7	8.6	12.0	11.6	11.4
12c Patient status at end of year (% of 12a; sums to 100%)							
Alive in this facility on 12/31	75.9	72.5	73.4	73.1	72.0	72.8	73.0
Alive in another facility on 12/31	8.2	8.2	8.1	9.7	9.1	8.5	8.4
Received a transplant	3.2	4.1	1.7	4.6	3.5	3.2	2.4
Died; death attributed to this facility	9.5	11.7	11.6	10.9	12.6	12.5	12.6
Died; death attributed to another facility	1.9	0.6	2.9	1.7	1.1	1.1	1.3
Other ^{*3}	1.3	2.9	2.3	0.0	1.7	2.0	2.2

[*1] Patient assignment for Tables 1, 2, 3, 10, 11 and 12 only. See *Guide, Section XV*.

[*2] Values are shown for the average facility.

[*3] Also includes dialysis unrelated deaths. Dialysis unrelated deaths are not attributed to any facility for the purposes of the mortality calculations in this report.

2014 Dialysis Facility Report

NKC RENTON KIDNEY CENTER State: WA Network: 16 CCN: 502508

TABLE 13: Patient and Staff Counts from the Annual Facility Survey (Form CMS-2744) ^{*1}, 2010-2013

Measure Name		This Facility				Regional Averages ^{*2} , 2013		
		2010	2011	2012	2013	State	Network	U.S.
Patients Treated During the Year								
13a	Patients treated during year (n)	177	198	248	257	121.7	104.9	105.1
13b	Incident patients (% of 13a)	16.9	19.7	18.5	17.5	16.3	16.8	16.7
13c	Transferred into facility (% of 13a)	10.7	15.7	23.8	25.7	17.6	17.2	16.1
13d	Transferred out of facility (% of 13a)	15.8	16.2	32.7	30.7	16.4	16.4	15.9
Patients Treated on 12/31								
13e	Patients treated (n)	128	139	144	146	82.8	71.0	71.7
13f	Patient modality (n; sums to 13e)							
	In-center HD	128	139	142	146	71.1	59.9	63.5
	Frequency <= 4 times per week	128	139	142	146	71.1	59.8	63.5
	Frequency > 4 times per week	0	0	0	0	0.1	0.0	0.0
	In-center CAPD ^{*3}	0	0	0	0	0.0	0.0	0.0
	In-center CCPD ^{*3}	0	0	0	0	0.0	0.0	0.0
	In-center Other ^{*3}	0	0	0	0	0.0	0.0	0.0
	Home HD	0	0	1	0	2.7	1.9	1.3
	Frequency <= 4 times per week	0	0	0	0	0.3	0.3	0.5
	Frequency > 4 times per week	0	0	1	0	2.4	1.7	0.8
	Home CAPD	0	0	1	0	1.3	1.9	1.4
	Home CCPD	0	0	0	0	7.6	7.4	5.5
	Home Other ^{*3}	0	0	0	0	0.0	0.0	0.0
13g	Vocational rehabilitation: Patients aged 18-54 (n)	44	43	45	51	25.0	21.3	21.4
	Employed (full or part-time) (% of 13g)	31.8	25.6	28.9	21.6	24.3	23.3	13.1
	Attending school (full or part-time) (% of 13g)	6.8	2.3	6.7	3.9	3.3	3.5	1.0
13h	Medicare eligibility status (% of 13e; sums to 100% ^{*4})							
	Medicare	84.4	85.6	78.5	74.0	86.3	88.4	83.1
	Medicare application pending	10.2	8.6	0.0	3.4	1.4	1.4	2.0
	Non-Medicare	5.5	5.8	21.5	22.6	12.3	10.2	14.9
Facility Staffing on 12/31 ^{*5}								
13i	Total full and part time staff positions (n)	27	35	30	28	19.1	16.3	14.5
13j	Staff positions by type (n; sums to 13i)							
	Full time nurse ^{*6}	10	11	14	6	4.9	4.8	5.0
	Full time patient care technician	10	13	11	12	7.1	6.3	5.6
	Full time renal dietician	1	1	1	1	0.5	0.5	0.6
	Full time social worker	1	1	1	1	0.5	0.5	0.6
	Part time nurse ^{*6}	4	7	3	6	2.3	1.4	0.9
	Part time patient care technician	1	1	0	2	2.4	1.4	0.7
	Part time renal dietician	0	0	0	0	0.7	0.7	0.6
	Part time social worker	0	1	0	0	0.7	0.7	0.5

[*1] See Guide, Section XVI

[*2] Values are shown for the average facility.

[*3] Due to rounding, regional average may be slightly greater than 0 (<0.05).

[*4] Values may not sum to exactly 100% because of unknown Medicare status.

[*5] Data as of June 24, 2014. A *full time position* is defined as a position with at least 32 hours of employment per week, and a *part time position* is defined as a position with less than 32 hours of employment per week (includes positions that were opened but not filled on this date).

[*6] Nursing staff includes registered nurse, licensed practical nurse, vocational nurse, or advanced practice nurse degree.

2014 Dialysis Facility Report

NKC RENTON KIDNEY CENTER State: WA Network: 16 CCN: 502508

TABLE 14: CROWNWeb Clinical Data ^{*1}, May 2012-2013

Measure Name	This Facility				Regional Averages ^{*2}		
	2010	2011	2012	2013	State	Network	U.S.
2013							
14a Eligible patients (n) ^{*3}	.	.	149	167	100.1	85.3	85.9
14b Eligible patient-months (n) ^{*4}	.	.	996	1472	873.4	743.4	755.5
14c Eligible HD patients (n) ^{*5}	.	.	149	167	89.8	74.8	79.3
14d Eligible HD patient-months (n) ^{*4}	.	.	993	1472	781.1	646.7	696.8
14e Eligible PD patients (n) ^{*5}	.	.	0	0	23.6	21.9	20.4
14f Eligible PD patient-months (n) ^{*4}	.	.	0	0	182.9	171.4	160.0
Hemodialysis Adequacy							
14g Eligible HD Kt/V patients (n) ^{*7}	.	.	124	155	77.1	61.4	61.7
14h Eligible HD Kt/V patient-months (n) ^{*7}	.	.	840	1247	552.3	428.1	456.7
14i Average Kt/V ^{*6} (average of 14h) ^{*7}	.	.	1.7	1.7	1.7	1.7	1.6
14j Kt/V categories (% of 14h; sums to 100%) ^{*7}							
<1.2	.	.	1.7	2.8	2.4	2.4	2.2
1.2-<1.8	.	.	62.7	63.6	62.3	63.4	67.6
>=1.8	.	.	35.0	33.4	33.6	32.6	28.9
Missing/Out of range	.	.	0.6	0.2	1.7	1.5	1.2
14k Average normalized protein catabolic rate (nPCR) ^{*6} (average of 14d)	.	.	1.1	1.1	1.0	1.0	0.9
14l nPCR Missing/Out of range (% of 14d)	.	.	9.9	5.8	28.0	29.1	32.7
Peritoneal Dialysis Adequacy ^{*8}							
14m Average weekly Kt/V ^{*6} (average of 14f)	2.3	2.3	2.3
14n Weekly Kt/V categories (% of 14f; sums to 100%)							
<1.7	3.3	3.7	4.8
1.7-<2.5	40.4	45.2	48.9
>=2.5	19.8	22.7	20.2
Missing/Out of range	36.6	28.4	26.2
14o Average normalized protein catabolic rate (nPCR) ^{*6} (average of 14f)	0.9	0.9	0.9
14p nPCR Missing/Out of range (% of 14f)	69.6	59.1	56.5
Anemia							
14q Average hemoglobin ^{*6} (average of 14b)	.	.	10.9	10.7	10.8	10.9	10.8
14r Hemoglobin categories (% of 14b; sums to 100%)							
<10 g/dL	.	.	19.4	22.6	19.1	17.2	18.3
10-<11 g/dL	.	.	30.0	34.1	34.7	33.5	33.4
11-12 g/dL	.	.	29.5	28.4	28.5	29.0	27.4
>12 g/dL	.	.	11.6	10.1	12.1	13.3	11.2
Missing/Out of range	.	.	9.4	4.9	5.6	7.0	9.7
14s ESA prescribed (% of 14b)	.	.	87.7	94.4	69.5	59.9	64.8

(continued)

2014 Dialysis Facility Report

NKC RENTON KIDNEY CENTER State: WA Network: 16 CCN: 502508

TABLE 14 (cont.): CROWNWeb Clinical Data ^{*1}, May 2012-2013

Measure Name	This Facility				Regional Averages ^{*2}		
	2010	2011	2012	2013	State	Network	U.S.
Iron							
2013							
14t Average reticulocyte hemoglobin content (CHr) ^{*6} (average of 14b)	33.1	33.4	30.7
14u CHr categories (% of 14b; sums to 100%)							
<29 pg	.	.	0.0	0.0	0.0	0.0	0.3
>=29 pg	.	.	0.0	0.0	0.6	1.7	1.5
Missing/Out of range	.	.	100	100	99.4	98.3	98.2
14v Average transferrin saturation (TSAT) ^{*6} (average of 14b)	.	.	34.5	34.0	31.2	31.5	32.3
14w TSAT categories (% of 14b; sums to 100%)							
<20%	.	.	4.6	5.8	10.4	10.8	10.3
>=20%	.	.	36.3	33.6	50.3	56.7	64.2
Missing/Out of range	.	.	59.0	60.5	39.4	32.5	25.5
14x Average ferritin ^{*6} (average of 14b)	.	.	1186	1102	889	861	854
14y Ferritin categories (% of 14b; sums to 100%)							
<200 ng/ml	.	.	0.3	0.7	2.1	2.6	2.4
>=200 ng/ml	.	.	40.9	39.9	46.7	46.0	46.0
Missing/Out of range	.	.	58.8	59.4	51.2	51.5	51.6
14z Intravenous iron prescribed (% of 14b)	.	.	85.8	93.3	54.8	46.3	46.6
14aa Oral iron prescribed (% of 14b)	.	.	0.1	0.6	2.2	2.0	1.2
Mineral Metabolism							
14ab Average phosphorous ^{*6} (average of 14b)	.	.	5.2	5.3	5.3	5.2	5.1
14ac Phosphorous categories (% of 14b; sums to 100%)							
<3.5 mg/dL	.	.	8.4	9.7	8.7	8.4	9.3
3.5-4.5 mg/dL	.	.	22.7	24.4	25.0	24.9	25.2
4.6-5.5 mg/dL	.	.	28.2	23.6	27.9	27.8	28.3
5.6-7.0 mg/dL	.	.	21.8	24.9	20.2	19.5	17.4
>7.0 mg/dL	.	.	9.4	12.5	12.0	11.3	9.5
Missing/Out of range	.	.	9.4	4.9	6.2	8.0	10.4
14ad Average calcium uncorrected ^{*6} (average of 14b)	.	.	9.2	9.1	9.0	9.0	9.0
14ae Calcium uncorrected categories (% of 14b; sums to 100%)							
<8.4 mg/dL	.	.	8.6	14.1	14.6	13.9	14.2
8.4-10.2 mg/dL	.	.	74.8	74.1	73.6	72.6	70.5
>10.2 mg/dL	.	.	7.1	6.9	4.7	4.6	4.1
Missing/Out of range	.	.	9.4	4.9	7.0	9.0	11.1

n/a = not applicable.

[*1] See *Guide, Section XVII*.

[*2] Values are shown for the average facility.

[*3] 14a includes those who switch between HD and PD during the month and patients for whom modality is unknown.

[*4] Patients may be counted up to 12 times per year.

[*5] Sum of eligible HD and PD patients may not add to 14a.

[*6] Based on in-range values; see *Guide* for range values.

[*7] Kt/V summaries are restricted to patients who dialyze thrice weekly and whose Kt/V calculation method is Daugirdas II or UKM.

[*8] The PD Adequacy section uses the most recent value over a 4-month look-back period. Therefore, reporting for PD in this table begins with August 2012 which includes a look-back through May 2012.

2014 Dialysis Facility Report

NKC RENTON KIDNEY CENTER State: WA Network: 16 CCN: 502508

TABLE 15: Survey and Certification Activity^{*1}

Measure Name	This Facility	Regional Averages		
		State	Network	U.S.
15a Date of last survey	08/22/2012	n/a	n/a	n/a
15b Type of last survey	Recertification	n/a	n/a	n/a
15c Compliance condition after last survey	Meets requirements	n/a	n/a	n/a
15d Number of deficiencies cited at last survey				
Condition for coverage (CfC) deficiencies	0	0.3	0.3	0.3
Standard deficiencies	4	10.2	6.2	6.3
15e CfC deficiencies cited at last survey ^{*2}				
V100 Compliance with Fed., State, and Local Laws	No, not cited	0.0	0.0	0.0
V110 Infection Control	No, not cited	2.5	2.1	5.5
V175 Water and Dialysate Quality	No, not cited	5.0	5.9	3.7
V300 Reuse of Hemodialysis and Bloodlines	No, not cited	0.0	0.0	0.5
V400 Physical Environment	No, not cited	2.5	1.1	2.5
V450 Patient Rights	No, not cited	0.0	0.0	0.4
V500 Patient Assessment	No, not cited	1.3	1.6	2.6
V540 Patient Plan of Care	No, not cited	1.3	2.7	3.1
V580 Care at Home	No, not cited	0.0	0.5	0.5
V625 Quality Assessment & Performance Improvement	No, not cited	2.5	3.7	4.4
V660 Special Purpose Renal Dialysis Facilities	No, not cited	0.0	0.0	0.0
V675 Laboratory Services	No, not cited	0.0	0.0	0.0
V680 Personnel Qualifications	No, not cited	0.0	1.1	0.7
V710 Responsibilities of the Medical Director	No, not cited	2.5	3.2	4.0
V725 Medical Records	No, not cited	0.0	0.0	0.3
V750 Governance	No, not cited	8.8	5.9	3.6

n/a = not applicable

[*1] See *Guide, Section XVIII*. Data on this table are from the facility's latest survey since January 2009. If your facility has not been surveyed since January 2009, facility-level data on this table will be missing.

[*2] Regional values are the percentage of surveys that were cited for the respective CfC deficiency.

TABLE 16: Facility Information^{*1}, 2014

Characteristic	This Facility
Ownership	Nonprofit
Organization	NORTHWEST KIDNEY CENTERS
Initial Medicare certification date	02/28/1986
Number of stations ^{*2}	28
Services provided ^{*2}	Hemodialysis and Peritoneal Dialysis
CMS Certification Number (CCN) included in this report	502508
National Provider Identifier (NPI) ^{*3}	1922193564

[*1] Information based on SIMS data as of March 31, 2014. See *Guide, Section XIX*.

[*2] Information based on data available on DFC as of May 2014.

[*3] Information based on CROWNWeb data as of December 2013. If missing, data were not available.