

2014 Dialysis Facility Report

(for CMS Survey use in FY 2015)

Purpose of the Report

The *2014 Dialysis Facility Report (DFR)* is provided as a resource for characterizing selected aspects of clinical experience at this facility relative to other caregivers in this state, ESRD Network, and across the United States. Since these data could be useful in quality improvement and assurance activities, each state's surveying agency may utilize this report as a resource during the FY 2015 survey and certification process.

This report has been prepared for this facility by the University of Michigan Kidney Epidemiology and Cost Center (UM-KECC) with funding from the Centers for Medicare & Medicaid Services (CMS) and is based primarily on Medicare claims and data collected for CMS. It is the nineteenth in a series of annual reports. This is one of 6,371 reports that have been distributed to ESRD providers in the U.S.

This DFR includes data specific to CCN(s): 502516

Overview: This report includes summaries of patient characteristics, treatment patterns, and patient outcomes for chronic dialysis patients who were treated in this facility between January 2010 and December 2013. Mortality, hospitalization, and transplantation statistics are reported for a three- or four-year period. Regional and national averages are included to allow for comparisons. Several of the summaries of patient mortality, hospitalization, and transplantation are adjusted to account for the characteristics of the patient mix at this facility, such as age, sex and diabetes as a cause of ESRD. Unless otherwise specified, data refer to hemodialysis (HD) and peritoneal dialysis (PD) patients combined.

Selected highlights from this report are given on pages 2 through 4. For a complete description of the methods used to calculate the statistics in this report, please see the *Guide to the 2014 Dialysis Facility Reports*. The *Guide* may be downloaded from the methodology section of the Dialysis Reports website at www.DialysisReports.org.

What's New This Year: As part of a continuing effort to improve the quality and relevance of this report, the following changes have been incorporated into your 2014 DFR. The UM-KECC ESRD database now includes the new web-based data collection system, CROWNWeb. It was rolled out nationally in May 2012 and replaces the functionality of SIMS. Authorized users may now securely submit, update, and verify data provided to Medicare about people who have ESRD on a monthly basis. Table 14 presents descriptive statistics on a portion of the CROWNWeb clinical data. In addition, the Influenza Vaccination table (Table 5) has been amended to include a fourth year of vaccination statistics to assess the percentage of patients vaccinated by December 31st, 2013.

Table 6 now includes a transfusion summary for adult Medicare dialysis patients treated in your facility and the Standardized Transfusion Ratio (STrR) that allows for national comparison of transfusion activity.

How to Submit Comments

Between July 15, 2014 and August 15, 2014, facilities may submit comments to their state surveyor or UM-KECC by visiting www.DialysisReports.org, logging on to view their report, and clicking on the **Comments & Inquiries** tab. Questions or comments after the comment period is over may be submitted to us directly at Support@DialysisReports.org or 1-877-665-1680.

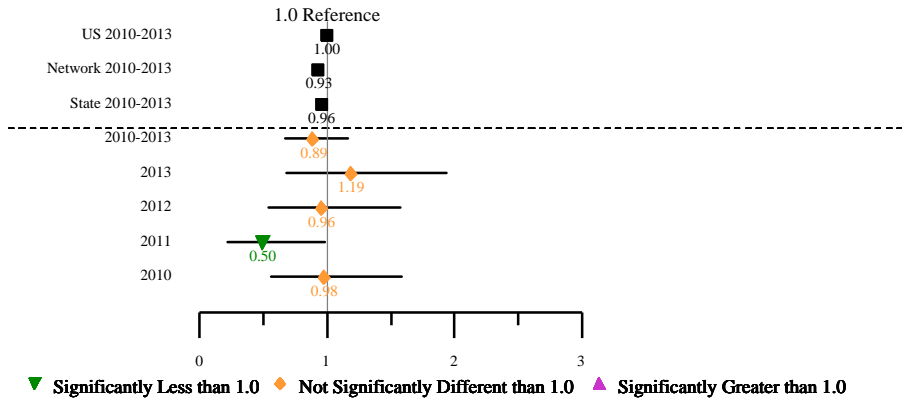
- (1) **State Surveyor:** Dialysis facilities may submit comments on the DFR for their state's surveyors. State surveyor(s) will receive a copy of their DFR with the comments they submitted in September 2014.
- (2) **UM-KECC:** Submit questions or suggestions to improve the DFR to UM-KECC. These comments will not be shared with CMS or your state surveyor.

Facility Highlights

Standardized Mortality Ratio (SMR) (Table 1):

- At this facility, the 2010-2013 SMR is 0.89, which is 11% fewer deaths than expected at this facility. Among all U.S. facilities, 33% of facilities had a four-year SMR lower than 0.89. This difference is not statistically significant ($p \geq 0.05$), so this lower mortality could plausibly be just a chance occurrence. The 2010-2013 SMR of observed to expected deaths is 0.96 and 0.93 for your State and Network, respectively.

The markers show the values of the SMR for this facility, State, Network, and Nation. The bolded horizontal line shows the range of uncertainty due to random variation (95% confidence interval; significant if it does not cross the 1.0 reference line). Regional and national SMR are plotted above the dotted line to allow for comparisons to facility values.

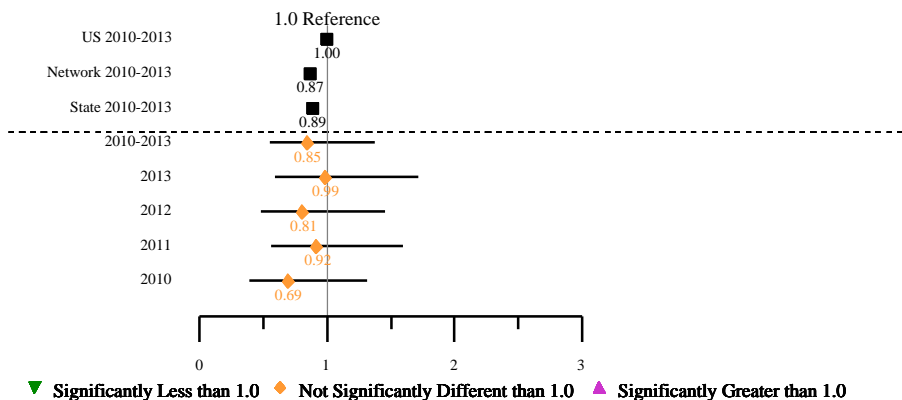


- At this facility, the 2010-2012 first-year SMR of observed to expected deaths is 0.65, which is 35% fewer deaths than expected at this facility. Among all U.S. facilities, 22% of facilities had a first-year SMR lower than 0.65. This difference is not statistically significant ($p \geq 0.05$), so this lower mortality could plausibly be just a chance occurrence. The first-year SMR (2010-2012) of observed to expected deaths is 0.86 and 0.84 for your State and Network, respectively.

Standardized Hospitalization Ratio (SHR) (Table 2):

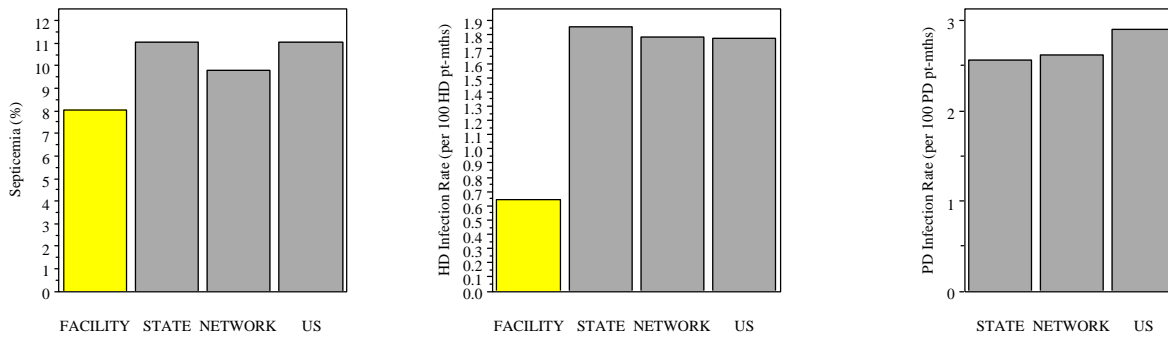
- The 2010-2013 SHR (ED) at this facility is 0.86, which is 14% fewer ED visits than expected. This difference is not statistically significant ($p \geq 0.05$), so this lower ED visit ratio could plausibly be just a chance occurrence. The 2010-2013 SHR (ED) for your State and Network is 0.97 and 0.95, respectively.
- The 2010-2013 SHR (Days) at this facility is 0.67, which is 33% fewer days hospitalized than expected. This difference is not statistically significant ($p \geq 0.05$), so this lower hospitalization could plausibly be just a chance occurrence. The 2010-2013 SHR (Days) for your State and Network is 0.69 and 0.68, respectively.
- The 2010-2013 SHR (Admissions) at this facility is 0.85, which is 15% fewer admissions hospitalized than expected. This difference is not statistically significant ($p \geq 0.05$), so this lower hospitalization could plausibly be just a chance occurrence. The 2010-2013 SHR (Admissions) for your State and Network is 0.89 and 0.87, respectively.

The markers show the values of the SHR (Admissions) for this facility, State, Network, and Nation. The bolded horizontal line shows the range of uncertainty due to random variation (95% confidence interval; significant if it does not cross the 1.0 reference line). Regional and national SHR (Admissions) are plotted above the dotted line to allow for comparisons to facility values.



Infection (Tables 2 and 8):

- The percentage of Medicare dialysis patients at this facility hospitalized with septicemia during 2010-2013 was 8.1%, compared to 11.1% in your State, 9.8% in your Network, and 11.0% nationally.
- The rate of HD infection among HD patients at this facility in 2013 was 0.6 per 100 HD patient-months, compared to 1.9 in your State, 1.8 in your Network, and 1.8 nationally.
- The rate of PD catheter-related infection is unavailable. The rates of PD catheter-related infection are 2.6, 2.6, and 2.9 for your State, Network and U.S., respectively.



Transplantation (Table 3):

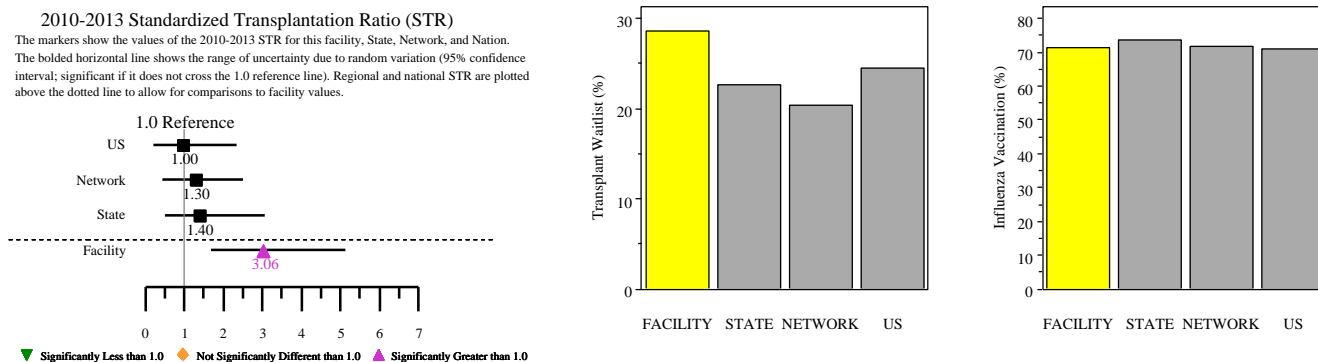
- Of the patients under age 70 treated at this facility during 2010-2013 who had not previously received a transplant, 12% were transplanted annually, while a rate of 4% would be expected for these patients.
- The 2010-2013 Standardized 1st Transplantation Ratio (STR) of observed to expected number of patients transplanted for this facility is 3.06, which is 206% higher than expected for this facility. This difference is statistically significant ($p < 0.05$) and is unlikely to be due to random chance. The 2010-2013 STR for your State and Network is 1.40 and 1.30, respectively.

Transplant Waitlist (Table 4):

- Among the 35 dialysis patients under age 70 treated at this facility on December 31, 2013, 29% were on the kidney transplant waitlist compared to 25% nationally. This difference is not statistically significant ($p \geq 0.05$) and is plausibly due to random chance. The percentage of patients on the kidney transplant waitlist on December 31, 2013 in your State and Network is 23% and 20%, respectively.

Influenza Vaccination (Table 5):

- Among the 49 Medicare dialysis patients treated at this facility on December 31, 2013, 71% were vaccinated between August 1 and December 31, 2013 compared to 71% nationally. This difference is not statistically significant ($p \geq 0.05$) and is plausibly due to random chance. The percentage of patients vaccinated in your State, Network, and nation is 74%, 72%, and 71%, respectively.



2014 Dialysis Facility Report

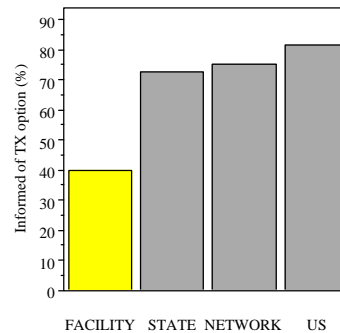
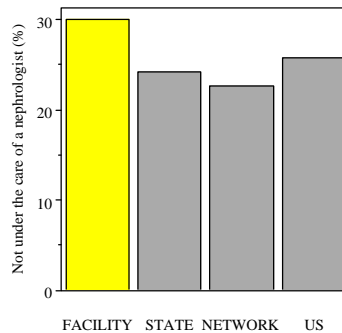
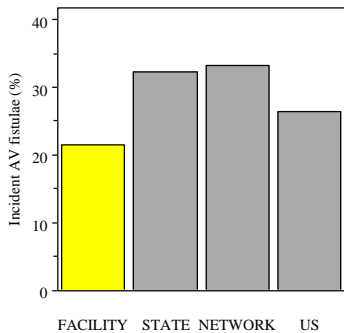
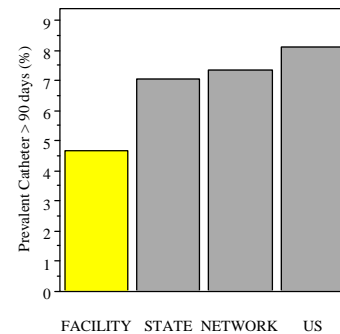
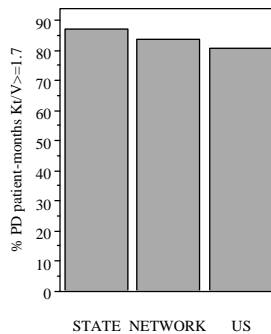
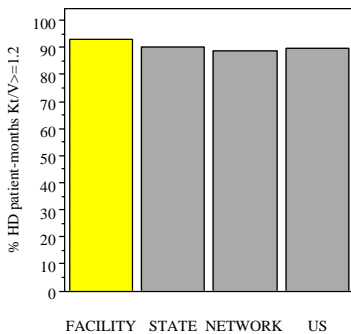
NKC KIRKLAND KIDNEY CENTER State: WA Network: 16 CCN: 502516

Practice Patterns (Tables 6 and 7):

- Among the 50 ESA-treated dialysis patients included in the analysis in 2013, the average hemoglobin calculated is 10.4 g/dL, compared to 10.5 g/dL in your State, 10.6 g/dL in your Network, and 10.5 g/dL nationally.
- Among the 46 HD patients in this facility included in the analysis in 2013, 100% had URR above the KDOQI minimum value for URR (65%), compared to 99% in your State, 99% in your Network, and 99% nationally.
- In 2013, 93% of eligible HD patient-months had a Kt/V ≥ 1.2 , compared to 90% in your State, 89% in your Network, and 90% nationally.
- In 2013, the percent of eligible PD patient-months that had a Kt/V ≥ 1.7 is unavailable. The percent of patients with Kt/V ≥ 1.7 in your State, Network, and US is 87%, 84%, and 81% respectively.
- At this facility in 2013, an average of 21% of incident patients had arteriovenous (AV) fistulae in place, compared to 32% in your State, 33% in your Network, and 26% nationally.
- Of the prevalent patients receiving hemodialysis treatment at this facility in 2013, 5% had a catheter which had been in place for at least 90 days as their only vascular access, compared to 7% in your State, 7% in your Network, and 8% nationally.

Patient Characteristics (Tables 9 and 10):

- Among the 20 patients with Medical Evidence Forms (CMS-2728) indicating treatment at this facility during 2013:
 - 30% of these patients were not under the care of a nephrologist before starting dialysis, compared to 24% in your State, 23% in your Network, and 26% nationally.
 - 40% of these patients were informed of their transplant options, compared to 72% in your State, 75% in your Network, and 82% nationally.
- Among the patients treated at this facility on December 31, 2013, 20% were treated in a nursing home during the year, compared to 15% nationally.



Prepared by
 The University of Michigan Kidney Epidemiology and Cost Center (UM-KECC)
 under contract with the Centers for Medicare & Medicaid Services

2014 Dialysis Facility Report

NKC KIRKLAND KIDNEY CENTER State: WA Network: 16 CCN: 502516

TABLE 1: Mortality Summary for All Dialysis Patients (2010-13) & New Dialysis Patients (2010-12)*1

Measure Name	This Facility					Regional Averages*2, per Year, 2010-2013		
	2010	2011	2012	2013	2010-2013	State	Network	U.S.
All Patients: Death Rates								
1a Patients (n=number)	102	94	97	84	377 *9	101.0	82.0	93.7
1b Patient-years (PY) at risk (n)	69.3	67.2	68.1	57.2	261.7 *9	71.2	57.9	63.6
1c Deaths (n)	16	8	15	16	55 *9	13.2	10.6	11.5
1d Expected deaths (n)	16.4	16.1	15.7	13.5	61.6 *9	13.8	11.3	11.5
All Patients: Categories of Death								
1e Withdrawal from dialysis prior to death (% of 1c)	56.3	25.0	53.3	62.5	52.7	40.4	41.9	25.7
1f Death due to: Infections (% of 1c)	12.5	0.0	0.0	6.3	5.5	14.7	14.8	13.8
Cardiac causes (% of 1c)	50.0	62.5	20.0	43.8	41.8	39.1	42.0	46.0
1g Dialysis unrelated deaths *3 (n; excluded from SMR)	0	0	0	0	0 *9	0.1	0.1	0.1
All Patients: Standardized Mortality Ratio (SMR)								
1h SMR *5	0.98	0.50	0.96	1.19	0.89	0.96	0.93	1.00
1i P-value *6	0.999	0.042	0.994	0.555	0.442	n/a	n/a	n/a
1j Confidence interval for SMR *7								
High (97.5% limit)	1.59	0.98	1.58	1.93	1.16	n/a	n/a	n/a
Low (2.5% limit)	0.56	0.21	0.53	0.68	0.67	n/a	n/a	n/a
1k SMR percentiles for this facility (i.e., percent of facilities with lower mortality rates) *8								
In this State	51	8	47	79	39	n/a	n/a	n/a
In this Network	51	9	55	81	45	n/a	n/a	n/a
In the U.S.	49	10	47	70	33	n/a	n/a	n/a
Regional Averages*2, per Year, 2010-2012								
New Patients: First Year Death Rates								
1l New patients (n=number)	28	28	15		71 *9	21.2	17.9	18.0
1m Patient-years (PY) at risk (n)	25.3	23.5	13.8		62.6 *9	18.7	15.8	15.6
1n Deaths (n)	4	5	2		11 *9	4.0	3.3	3.8
1o Expected deaths (n)	7.8	5.3	3.9		17.0 *9	4.6	4.0	3.8
New Patients: Categories of Deaths								
1p Withdrawal from dialysis prior to death (% of 1n)	75.0	60.0	100		72.7	43.7	44.0	27.9
1q Death due to: Infections (% of 1n)	0.0	20.0	0.0		9.1	13.0	13.6	12.8
Cardiac causes (% of 1r)	50.0	40.0	0.0		36.4	36.4	39.6	41.6
New Patients: First Year Standardized Mortality Ratio (SMR)								
1r SMR *5	0.51	0.94	0.52		0.65	0.86	0.84	1.00
1s P-value *6	0.224	0.999	0.515		0.171	n/a	n/a	n/a
1t Confidence interval for SMR *7								
High (97.5% limit)	1.31	2.20	1.87		1.16	n/a	n/a	n/a
Low (2.5% limit)	0.14	0.31	0.06		0.32	n/a	n/a	n/a
1u First Year SMR percentiles for this facility (i.e., percent of facilities with lower mortality rates) *8								
In this State	20	71	26		32	n/a	n/a	n/a
In this Network	22	64	32		34	n/a	n/a	n/a
In the U.S.	23	50	24		22	n/a	n/a	n/a

n/a = not applicable

*1] See Guide, Section IV.

*2] Values are shown for the average facility, annualized.

*3] Defined as deaths due to street drugs and accidents unrelated to treatment.

*4] Not shown if fewer than 3 expected deaths.

*5] Calculated as a ratio of deaths to expected deaths (1c to 1d for all patients, 1n to 1o for new patients).

*6] A p-value less than 0.05 indicates that the difference between the actual and expected mortality is probably real and is not due to random chance alone, while a p-value greater than or equal to 0.05 indicates that the difference could plausibly be due to random chance.

*7] The confidence interval range represents uncertainty in the value of the SMR due to random variation.

*8] All facilities are included in ranking, regardless of the number of expected deaths.

*9] Sum of 4 years (all patients) or 3 years (new patients) used for calculations; should not be compared to regional averages.

2014 Dialysis Facility Report

NKC KIRKLAND KIDNEY CENTER State: WA Network: 16 CCN: 502516

TABLE 2: Hospitalization Summary for Medicare Dialysis Patients^{*1}, 2010-2013

Measure Name	This Facility					Regional Averages ^{*2} , per Year, 2010-2013		
	2010	2011	2012	2013	2010-2013	State	Network	U.S.
Medicare Dialysis Patients								
2a Medicare dialysis patients (n)	86	74	79	71	310 ^{*3}	81.7	65.1	73.7
2b Patient-years (PY) at risk (n)	54.2	52.2	52.0	44.8	203.2 ^{*3}	54.1	42.4	46.1
Days Hospitalized Statistics								
2c Total days hospitalized (n)	429	424	589	513	1955 ^{*3}	517.0	392.4	625.7
2d Expected total days hospitalized (n)	809.7	771.7	718.0	597.5	2896.9 ^{*3}	746.3	578.2	626.9
2e Standardized Hospitalization Ratio (Days) ^{*4}	0.53	0.55	0.82	0.86	0.67	0.69	0.68	1.00
2f P-value ^{*5}	0.174	0.210	0.673	0.750	0.290	n/a	n/a	n/a
2g Confidence interval for SHR (Days) ^{*6}								
High (97.5% limit)	1.29	1.36	1.73	1.76	1.34	n/a	n/a	n/a
Low (2.5% limit)	0.25	0.25	0.43	0.46	0.37	n/a	n/a	n/a
2h Percentiles for this facility (i.e., % of facilities with lower hospitalization rates [days]) ^{*7}								
In this State	31	28	75	69	55	n/a	n/a	n/a
In this Network	33	36	74	74	57	n/a	n/a	n/a
In the U.S.	10	11	37	40	16	n/a	n/a	n/a
Admission Statistics								
2i Total admissions (n)	78	101	83	86	348 ^{*3}	93.1	70.6	88.1
2j Expected total admissions (n)	112.2	109.3	102.3	86.8	410.6 ^{*3}	105.0	81.6	88.2
2k Standardized Hospitalization Ratio (Admissions) ^{*4}	0.69	0.92	0.81	0.99	0.85	0.89	0.87	1.00
2l P-value ^{*5}	0.279	0.841	0.514	0.999	0.539	n/a	n/a	n/a
2m Confidence interval for SHR (Admissions) ^{*6}								
High (97.5% limit)	1.32	1.60	1.45	1.72	1.37	n/a	n/a	n/a
Low (2.5% limit)	0.39	0.56	0.47	0.59	0.54	n/a	n/a	n/a
2n Percentiles for this facility (i.e., % of facilities with lower hospitalization rates [admissions]) ^{*7}								
In this State	19	63	31	67	38	n/a	n/a	n/a
In this Network	25	64	40	73	48	n/a	n/a	n/a
In the U.S.	15	44	28	53	30	n/a	n/a	n/a
2o Diagnoses associated with hospitalization (% of 2a) ^{*8}								
Septicemia	3.5	8.1	10.1	11.3	8.1	11.1	9.8	11.0
Acute myocardial infarction	3.5	9.5	8.9	12.7	8.4	4.4	4.3	4.2
Congestive heart failure	20.9	32.4	27.8	40.8	30.0	21.7	20.3	23.3
Cardiac dysrhythmia	10.5	23.0	19.0	32.4	20.6	16.6	15.2	15.3
Cardiac arrest	0.0	2.7	2.5	0.0	1.3	1.9	1.7	1.8
2p One day admissions (% of 2i)	20.5	23.8	9.6	8.1	15.8	17.5	17.2	13.2
2q Average length of stay (days per admission; 2c/2i)	5.5	4.2	7.1	6.0	5.6	5.6	5.6	7.1
2r Readmissions within 30 days (n) ^{*9}	14	27	22	24	87 ^{*3}	26.7	19.1	27.1
2s Admissions that result in readmission within 30 days (% of 2i) ^{*9}	17.9	26.7	26.5	27.9	25.0	28.7	27.0	30.7

(continued)

2014 Dialysis Facility Report

NKC KIRKLAND KIDNEY CENTER State: WA Network: 16 CCN: 502516

TABLE 2 (cont.): Hospitalization Summary for Medicare Dialysis Patients^{*1}, 2010-2013

Measure Name	This Facility					Regional Averages ^{*2} , per Year, 2010-2013		
	2010	2011	2012	2013	2010-2013	State	Network	U.S.
Emergency Department (ED) Statistics								
2t Total ED visits (n)	115	139	136	140	530 ^{*3}	160.0	122.5	138.8
2u Expected total ED visits (n)	164	159	156	139	618 ^{*3}	165.0	128.8	139.2
2v Standardized Hospitalization Ratio (ED) ^{*4}	0.70	0.87	0.87	1.00	0.86	0.97	0.95	1.00
2w P-value ^{*5}	0.219	0.624	0.614	0.967	0.483	n/a	n/a	n/a
2x Confidence interval for SHR (ED) ^{*6}								
High (97.5% limit)	1.23	1.46	1.44	1.66	1.32	n/a	n/a	n/a
Low (2.5% limit)	0.41	0.53	0.54	0.61	0.56	n/a	n/a	n/a
2y Percentiles for this facility (i.e., % of facilities with lower hospitalization rates [ED]) ^{*7}								
In this State	12	39	40	56	33	n/a	n/a	n/a
In this Network	16	43	39	59	34	n/a	n/a	n/a
In the U.S.	14	34	34	54	28	n/a	n/a	n/a
2z Patients with ED visit (% of 2a)	54.7	71.6	62.0	76.1	65.5	62.7	61.9	61.2
2aa ED visits that result in hospitalization (% of 2t)	39.1	52.5	55.9	56.4	51.5	43.8	41.2	49.2
2ab Admissions that originate in the ED (% of 2i)	57.7	72.3	91.6	91.9	78.4	75.2	71.5	77.6

n/a = not applicable.

[*1] Based on patients with Medicare as primary insurer; see *Guide, Section V*.

[*2] Values are shown for the average facility, annualized.

[*3] Sum of 4 years used for calculations; should not be compared to regional averages.

[*4] Standardized Hospitalization Ratio calculated as ratio of actual to expected events (2c/2d for days, 2i/2j for admissions, and 2t/2u for ED visits); not shown if there are less than 5 patient years at risk.

[*5] A p-value less than 0.05 indicates that the difference between the actual and expected hospitalization/ED event is probably real and is not due to random chance alone, while a p-value greater than or equal to 0.05 indicates that the difference could plausibly be due to random chance.

[*6] The confidence interval range represents uncertainty in the value of the Standardized Hospitalization Ratio (SHR) due to random variation.

[*7] All facilities are included in ranking, regardless of the number of patient years at risk.

[*8] Includes diagnoses present at admission and diagnoses added during the hospital stay.

[*9] This value may be an underestimate since readmissions discharged after December 31, 2013 are not included.

2014 Dialysis Facility Report

NKC KIRKLAND KIDNEY CENTER State: WA Network: 16 CCN: 502516

TABLE 3: Transplantation Summary for Dialysis Patients under Age 70^{*1}, 2010-2013

Measure Name	This Facility					Regional Averages ^{*2} , per Year, 2010-2013		
	2010	2011	2012	2013	2010-2013	State	Network	U.S.
3a Eligible patients (n)	58	54	52	42	206 ^{*10}	68.8	56.2	64.4
3b Transplants (n)	4	7	3	2	16 ^{*10}	3.1	2.4	2.1
3c Donor type (sums to 3b ^{*3})								
Living donor (n)	1	2	1	1	5 ^{*10}	0.9	0.8	0.6
Deceased donor (n)	3	5	2	1	11 ^{*10}	2.3	1.7	1.5
Patients who have not Previously Received a Transplant								
3d Eligible patients (n)	49	47	42	34	172 ^{*10}	62.4	50.7	58.0
3e Patient years (PY) at risk (n)	31.0	29.8	28.6	23.6	113.0 ^{*10}	44.0	35.9	39.9
3f First transplants ^{*4} (n)	4	6	2	2	14 ^{*10}	2.8	2.1	1.8
3g Expected first transplants (n)	1.3	1.2	1.1	1.0	4.6 ^{*10}	2.0	1.6	1.8
Standardized 1st Transplantation Ratio (STR)^{*5}								
3h STR ^{*6}	3.06	1.40	1.30	1.00
3i P-value ^{*7}	<0.01	n/a	n/a	n/a
3j Confidence interval for STR ^{*8}								
High (97.5% limit)	5.14	n/a	n/a	n/a
Low (2.5% limit)	1.67	n/a	n/a	n/a
3k STR percentiles for this facility (i.e., % of facilities with lower transplantation rates) ^{*9}								
In this State	93	n/a	n/a	n/a
In this Network	94	n/a	n/a	n/a
In the U.S.	96	n/a	n/a	n/a

TABLE 4: Waitlist Summary for Dialysis Patients under Age 70 Treated on December 31st of Each Year^{*1}, 2010-2013

Measure Name	This Facility				Regional Averages ^{*2} , 2013		
	2010	2011	2012	2013	State	Network	U.S.
4a Eligible patients on 12/31 (n)	40	38	35	35	54.6	46.1	47.6
4b Patients on the waitlist (% of 4a)	45.0	28.9	28.6	28.6	22.7	20.4	24.5
4c P-value (compared to U.S. value) ^{*11}	<0.01	0.308	0.343	0.349	n/a	n/a	n/a
4d Patients on the waitlist by subgroup (%) ^{*12}							
Age < 40	75.0	0.0	0.0	50.0	37.9	30.9	36.7
Age 40-69	41.7	29.7	31.3	24.1	20.2	18.7	22.9
Male	43.5	21.7	21.1	30.0	22.4	20.6	25.6
Female	47.1	40.0	37.5	26.7	23.1	20.2	23.1
African American	0.0	0.0	0.0	40.0	23.3	20.8	22.8
Asian/Pacific Islander	62.5	60.0	50.0	33.3	27.7	26.9	36.9
Native American	13.5	16.4	19.2
White, Hispanic	0.0	0.0	0.0	0.0	22.1	19.4	27.9
White, non-Hispanic	46.4	28.6	29.6	28.0	21.9	19.9	23.3
Other/unknown race	.	.	.	0.0	28.6	20.0	29.4
Diabetes	36.8	22.2	33.3	30.8	16.3	14.7	19.9
Non-diabetes	52.4	35.0	25.0	27.3	28.0	25.1	28.2
Previous kidney transplant	66.7	50.0	14.3	57.1	42.2	36.6	45.1
No previous kidney transplant	41.2	25.0	32.1	21.4	20.6	18.7	22.6
< 2 years since start of ESRD	20.0	23.8	25.0	8.3	16.5	15.3	16.6
2-4 years since start of ESRD	66.7	42.9	40.0	33.3	26.8	24.2	29.0
5+ years since start of ESRD	53.8	30.0	23.1	45.5	25.9	23.0	28.8

n/a = not applicable [*1] See *Guide, Sections VI and VII*. [*2] Values are shown for the average facility. [*3] Values may not sum to 3b due to unknown donor type. [*4] Among first transplants that occurred after the start of dialysis from 2010-2013, 3.8% of transplants in the U.S. were not included because the transplant occurred fewer than 90 days after the start of ESRD and 1.3% were not included because the patient was not assigned to a facility at time of transplant. [*5] This section is calculated for the 4-year period only and not reported if there are fewer than 3 expected transplants. [*6] Standardized 1st Transplantation Ratio calculated as ratio of actual (3f) to expected (3g) transplants. [*7] A p-value less than 0.05 indicates that the difference between the actual and expected transplants is probably real and is not due to random chance, while a p-value greater than or equal to 0.05 indicates that the difference is plausibly due to random chance. [*8] The confidence interval range represents uncertainty in the value of the STR due to random variation. [*9] All facilities are included in ranking, regardless of the number of expected transplants. [*10] Sum of 4 years used for calculations; should not be compared to regional averages. [*11] Facility waitlist percentage is compared to the U.S. waitlist percentage for that year: 24.4% (2010), 24.3% (2011), 24.4% (2012), 24.5% (2013). A p-value greater than 0.05 indicates that the difference between percent of patients waitlisted at the facility and national percentage is plausibly due to random chance. [*12] A missing value indicates that there were no eligible patients in the subgroup.

2014 Dialysis Facility Report

NKC KIRKLAND KIDNEY CENTER State: WA Network: 16 CCN: 502516

TABLE 5: Influenza Vaccination Summary for Medicare Dialysis Patients Treated on December 31st of Each Year^{*1}, Flu Seasons August 2010-December 2013

Measure Name	This Facility				Regional Averages		
	2010	2011	2012	2013	State	Network	U.S.
2013							
5a Eligible patients on 12/31 (n)	56	50	55	49	56.8	46.4	48.5
5b Patients vaccinated between Aug. 1 and Dec. 31 (% of 5a)	89.3	94.0	96.4	71.4	73.8	71.6	71.0
5c P-value ^{*3} (for 5b compared to U.S. value ^{*4})	<0.01	<0.01	<0.01	0.546	n/a	n/a	n/a
2012							
5d Patients vaccinated between Aug 1 and Mar 31 of following year (% of 5a)	91.1	94.0	96.4	n/a	74.6	71.4	71.1
5e P-value ^{*3} (for 5d compared to U.S. value ^{*5})	<0.01	<0.01	<0.01	n/a	n/a	n/a	n/a
2013							
5f Patients vaccinated between Aug 1 and Dec 31 by subgroup (%) ^{*6}							
Age < 18	50.0	50.0	51.1
Age 18-39	100	.	100	50.0	69.9	68.9	67.8
Age 40-64	71.4	90.9	85.7	57.1	74.0	72.2	71.0
Age 65-74	88.9	85.7	100	84.6	73.1	70.5	70.9
Age 75+	100	100	100	77.8	75.7	73.2	72.3
Male	88.0	91.7	96.4	70.4	73.4	71.1	71.0
Female	90.3	96.2	96.3	72.7	74.2	72.4	71.1
African American	100	100	100	57.1	67.9	67.7	68.4
Asian/Pacific Islander	100	100	100	50.0	80.4	80.0	75.6
Native American	71.4	61.5	75.6
White	86.0	92.3	95.5	76.3	73.5	71.5	72.2
Other/unknown race	83.3	76.5	71.2
Hispanic	0.0	.	100	100	83.4	82.3	74.1
< 1 year since start of ESRD	66.7	83.3	80.0	27.3	61.2	59.5	57.8
1-2 years since start of ESRD	100	95.7	100	75.0	74.7	71.8	70.6
3+ years since start of ESRD	91.7	95.2	97.1	86.7	76.9	75.1	74.7

n/a = not applicable

[*1] Based on patients with Medicare as primary insurer; see *Guide, Section VIII*.

[*2] Values are shown for the average facility.

[*3] A p-value greater than or equal to 0.05 indicates that the difference between percent of patients vaccinated at the facility and national percentage is plausibly due to random chance.

[*4] Compared to the U.S. value for that year and time period (8/1-12/31): 68.1% (2010), 69.2% (2011), 70.1% (2012), 71.0% (2013).

[*5] Compared to the U.S. value for that year and time period (8/1-3/31): 68.7% (2010), 69.8% (2011), 71.1% (2012).

[*6] A missing value indicates that there were no eligible patients in the subgroup.

TABLE 6: Facility Modality, Hemoglobin, and Dialysis Adequacy for Medicare Dialysis Patients^{*1}, 2010-2013

Measure Name	This Facility				Regional Averages ^{*2} , 2013		
	2010	2011	2012	2013	State	Network	U.S.
Modality (among all dialysis patients with ESRD for 90+ days and 1+ claim at this facility)							
6a Patients treated during year (n)	87	84	94	97	99.1	77.2	74.8
6b Patient-months treated during year (n) ^{*3}	665	665	686	605	729.8	561.2	562.5
6c Modality (% of 6b; sums to 100%)							
Hemodialysis	100	99.5	99.9	100	83.9	84.4	90.9
CAPD/CCPD	0.0	0.0	0.0	0.0	8.3	10.9	8.0
Other dialysis ^{*4}	0.0	0.5	0.1	0.0	7.8	4.7	1.1
6d Percent of patient-months prescribed iron by modality ^{*5}							
Hemodialysis	66.6	55.1	53.3	51.1	55.7	56.8	60.7
CAPD/CCPD	22.0	19.4	24.2
Hemoglobin (among ESA-treated dialysis patients with ESRD for 90+ days and 4+ hemoglobin claims at this facility)							
6e Eligible patients (n)	64	57	56	50	52.8	40.5	44.2
6f Average hemoglobin (g/dL)	11.5	11.0	10.6	10.4	10.5	10.6	10.5
6g Hemoglobin categories (% of 6e; sums to 100%)							
< 10 g/dL	1.6	0.0	3.6	12.0	11.7	10.5	12.3
10-<11 g/dL	6.3	49.1	80.4	78.0	70.7	69.2	67.9
11-<12 g/dL	81.3	47.4	16.1	10.0	17.3	19.9	19.5
> 12 g/dL	10.9	3.5	0.0	0.0	0.3	0.3	0.3

(continued)

2014 Dialysis Facility Report

NKC KIRKLAND KIDNEY CENTER State: WA Network: 16 CCN: 502516

TABLE 6 (cont.): Facility Modality, Hemoglobin, and Dialysis Adequacy for Medicare Dialysis Patients^{*1}, 2010-2013

Measure Name	This Facility				Regional Averages ^{*2} , 2013		
	2010	2011	2012	2013	State	Network	U.S.
Hemoglobin (among ESA-treated dialysis patients with ESRD for 90+ days and 4+ hemoglobin claims at this facility) (cont.)							
6h Eligible hemodialysis (HD) patients (n) ^{*6}	64	57	56	50	49.2	37.4	41.6
6i Hemoglobin categories among HD pts (% of 6h; sums to 100%)							
< 10 g/dL	1.6	0.0	3.6	12.0	11.9	10.4	12.0
10-<11 g/dL	6.3	49.1	80.4	78.0	70.9	69.4	68.0
11-12 g/dL	81.3	47.4	16.1	10.0	16.9	19.9	19.6
> 12 g/dL	10.9	3.5	0.0	0.0	0.3	0.3	0.3
6j Eligible peritoneal dialysis (PD) patients (n) ^{*6}	0	0	0	0	4.4	4.0	3.2
6k Hemoglobin categories among PD pts (% of 6j; sums to 100%)							
< 10 g/dL	18.1	20.2	23.6
10-<11 g/dL	59.3	58.6	57.0
11-12 g/dL	21.8	20.6	18.5
> 12 g/dL	0.8	0.7	0.9
Standardized Transfusion Ratio (STrR)							
6l Adult Medicare patients (n)	81	58	51	50	72.7	61.9	62.5
6m Patient years (PY) at risk (n)	42	29	29	27	44.9	37.9	38.6
6n Total transfusions (n)	10	21	11	14	15.1	13.0	16.7
6o Expected total transfusions (n)	19.3	13.7	13.6	12.3	19.8	16.6	16.9
6p Standardized Transfusion Ratio ^{*11}	0.52	1.54	0.81	1.14	0.76	0.78	1.00
Upper Confidence Limit (97.5%)	1.69	3.57	2.55	3.04	n/a	n/a	n/a
Lower Confidence Limit (2.5%)	0.18	0.73	0.30	0.48	n/a	n/a	n/a
6q P-value ^{*12}	0.302	0.241	0.799	0.689	n/a	n/a	n/a
Urea Reduction Ratio (URR; among HD patients with ESRD for 183+ days and 4+ URR claims at this facility)^{*7}							
6r Eligible patients (n)	60	54	58	46	50.7	39.2	43.3
6s URR 65+ (% of 6r; meets a KDOQI guideline)	93.3	96.3	98.3	100	98.7	98.6	98.7
Adult Kt/V (K = dialyzer clearance of urea; t = dialysis time; V = patient's total body water)^{*8,*9}							
6t Eligible adult HD patients (n)	72	84	88	91	83.4	66.0	68.2
6u Eligible adult HD patient-months (n) ^{*3}	307	624	629	534	578.7	450.4	494.0
6v Adult HD: Average Kt/V ^{*10}	1.7	1.7	1.8	1.7	1.7	1.7	1.6
6w Kt/V categories among adult HD patients (% of 6u; sums to 100%)							
<1.2	3.3	3.0	1.4	0.9	2.5	2.6	2.4
1.2-<1.4	8.1	6.3	2.7	1.9	9.9	10.5	13.2
1.4-<1.6	18.2	20.7	22.6	27.7	23.5	24.5	26.9
1.6-<1.8	28.7	28.4	25.8	31.6	25.8	26.1	25.9
>= 1.8	37.1	37.2	41.5	31.6	30.8	27.7	23.8
Missing/Out of range/Not performed/Expired	4.6	4.5	6.0	6.2	7.6	8.6	7.9
6x Adult HD: Kt/V >=1.2 (% of 6u) ^{*10}	92.2	92.5	92.5	92.9	90.0	88.8	89.7
6y Eligible adult peritoneal dialysis (PD) patients (n)	0	0	0	0	8.4	8.2	5.9
6z Eligible adult PD patient-months (n) ^{*3}	0	0	0	0	62.0	62.1	45.0
6aa Adult PD: Average Kt/V ^{*10}	2.3	2.3	2.2
6ab Kt/V categories among adult PD patients (% of 6z; sums to 100%)							
<1.7	5.6	6.2	7.9
1.7-<1.9	12.1	12.1	16.5
1.9-<2.2	27.4	25.0	25.2
2.2-<2.5	20.8	19.3	16.8
>=2.5	27.0	27.5	22.2
Missing/Out of range/Not performed/Expired	7.2	10.0	11.3
6ac Adult PD: Kt/V >=1.7 (% of 6z) ^{*10}	87.2	83.8	80.8

n/a = not applicable

[*1] See *Guide, Section IX*. [*2] Values are shown for the average facility. [*3] Patients may be counted up to 12 times per year.

[*4] Other dialysis includes patients who switch between HD and PD during the month and patients for whom modality is unknown or missing.

[*5] Percent of patient months represented by the corresponding modality percent in 6c. [*6] Sum of eligible HD and PD patients may not add to 6e.

[*7] Claims identified as having 4 or more dialysis sessions per week were excluded from the URR calculations. Among eligible claims in the US, less than 2% were excluded due to frequent dialysis in 2010-2013.

[*8] Claims identified as having 2 or fewer, or 4 or more adult dialysis sessions per week were excluded from the Kt/V calculations.

[*9] Collection of the measures calculated in this section began in July 2010. Includes patients with Medicare as primary insurer and based on the value code D5: Result of last Kt/V.

[*10] Values calculated based only on Kt/V values reported in range.

[*11] Calculated as a ratio of observed transfusions to expected transfusions (6n to 6o); not shown if there are fewer than 10 patient-years at risk for transfusions.

[*12] A p-value less than 0.05 indicates that the difference between the actual and expected transfusion is probably real and is not due to random chance alone, while a p-value greater than or equal to 0.05 indicates that the difference could plausibly be due to random chance.

2014 Dialysis Facility Report

NKC KIRKLAND KIDNEY CENTER State: WA Network: 16 CCN: 502516

TABLE 7: Vascular Access Information^{*1}, CMS Fistula First (Jan. 2010 - Apr. 2012) and CROWNWeb (May 2012 - Dec. 2013)

Measure Name	This Facility				Regional Averages ^{*2} , 2013			
	2010	2011	2012	2013	State	Network	U.S.	
Vascular Access								
7a	Prevalent hemodialysis patient-months ^{*3}	942	945	899	752	834.9	698.8	734.5
7b	Vascular access type in use (% of 7a; sums to 100%)							
	Arteriovenous fistula	66.1	69.3	80.8	79.4	70.2	68.9	61.8
	Arteriovenous graft	14.2	10.7	8.6	7.3	12.8	12.8	19.0
	Catheter	19.6	20.0	10.7	13.3	16.8	18.2	19.1
	Other/Missing	0.0	0.0	0.0	0.0	0.2	0.1	0.1
7c	Arteriovenous fistulae in place (% of 7a) ^{*4}	74.8	79.3	83.5	81.0	72.9	72.5	65.2
7d	Catheter only >= 90 days (% of 7a) ^{*5}	3.2	4.7	4.1	4.7	7.0	7.3	8.1
Vascular Access at First Treatment								
7e	Incident hemodialysis patients (n)	28	25	10	14	14.1	12.3	10.7
7f	Vascular access type in use (% of 7e; sums to 100%)							
	Arteriovenous fistula	10.7	36.0	40.0	21.4	28.1	26.7	19.3
	Arteriovenous graft	7.1	0.0	0.0	14.3	4.6	4.0	3.4
	Catheter	82.1	64.0	60.0	64.3	67.3	69.2	77.2
	Other/Missing	0.0	0.0	0.0	0.0	0.1	0.0	0.1
7g	Arteriovenous fistulae in place (% of 7e) ^{*4}	39.3	44.0	40.0	21.4	32.3	33.3	26.3

TABLE 8: Dialysis Access Type and Access-Related Infection Summary for Medicare Dialysis Patients^{*1}, 2010 - 2013

Measure Name	This Facility				Regional Averages ^{*2} , 2013			
	2010	2011	2012	2013	State	Network	U.S.	
Vascular Access^{*7}								
8a	Eligible hemodialysis patient-months (n)	367	693	715	639	660.8	528.9	559.7
8b	Hemodialysis vascular access type (% of 8a)							
	Vascular catheter	18.8	12.0	10.6	12.8	14.4	15.5	16.6
	Arteriovenous graft	5.7	7.9	8.8	9.1	13.6	13.1	20.5
	Arteriovenous fistula only	54.5	62.3	78.2	78.1	71.9	71.3	62.8
	Other (>1) ^{*8}	21.0	17.7	2.4	0.0	0.0	0.1	0.1
8c	Vascular catheter reported >3 consecutive months	8.8	6.3	4.9	7.4	8.9	9.8	10.8
Hemodialysis (HD)								
8d	Eligible HD patients (n)	96	83	88	86	85.7	68.4	72.6
8e	Eligible HD patient-months ^{*3}	725	672	706	618	657.1	516.6	566.2
8f	HD infection rate per 100 hemodialysis patient-months ^{*9}	1.52	1.79	1.84	0.65	1.86	1.79	1.77
8g	P-value ^{*10} of 8f (compared to U.S. value) ^{*11}	<0.01	0.115	0.300	0.014	n/a	n/a	n/a
Peritoneal Dialysis (PD)								
8h	Eligible PD patients (n)	0	0	0	0	9.5	9.3	6.9
8i	Eligible PD patient-months ^{*3}	0	0	0	0	67.2	68.3	50.5
8j	PD catheter infection rate per 100 PD patient-months ^{*9}	2.56	2.62	2.90
8k	P-value ^{*10} of 8j (compared to U.S. value) ^{*12}	n/a	n/a	n/a

n/a = not applicable

[*1] See *Guide, Section X* (Table 7) and *Section XI* (Table 8).

[*2] Values are shown for the average facility.

[*3] Patients may be counted up to 12 times per year.

[*4] Includes all patients with fistulae, regardless of whether or not they received their hemodialysis treatments using their fistulae.

[*5] Patients listed as graft or catheter may have had fistulae in place for future use, but they actually received their treatment through a graft or catheter.

[*6] Based on V modifiers including V5, V6, and V7 for catheter, graft, and fistula, respectively. Collection began July 2010.

[*7] Vascular access section includes adult patients only. Pediatric vascular access data can be found in the pediatric table.

[*8] Other includes patients with >1 access type; it does not include missing access type.

[*9] The ICD-9 infection code for HD patients is 996.62. The ICD-9 PD catheter infection code for PD patients is 996.68.

[*10] A p-value greater than or equal to 0.05 indicates the differences between the percent of patients with infection at the facility and national percentage is plausibly due to random chance.

[*11] Compared to U.S. value for that year: 3.02 (2010), 2.58 (2011), 2.22 (2012), and 1.77 (2013).

[*12] Compared to U.S. value for that year: 3.27 (2010), 3.13 (2011), 3.09 (2012), and 2.90 (2013).

2014 Dialysis Facility Report

NKC KIRKLAND KIDNEY CENTER State: WA Network: 16 CCN: 502516

TABLE 9: Characteristics of New Dialysis Patients*¹, 2010-2013 (Form CMS-2728)

Measure Name	This Facility				Regional Averages* ² , 2013			
	2010	2011	2012	2013	State	Network	U.S.	
Patient Characteristics								
9a	Total number of patients with forms (n)	28	28	15	20	20.5	18.2	17.9
9b	Average age (years [0-95]) ^{*3}	66.4	60.7	61.8	59.4	62.7	62.7	63.4
9c	Female (% of 9a)	50.0	32.1	46.7	40.0	42.1	41.5	42.8
9d	Race (% of 9a; sums to 100%) ^{*4}							
	African-American	7.1	0.0	0.0	15.0	9.4	5.9	26.8
	Asian/Pacific Islander	10.7	7.1	6.7	15.0	10.3	7.1	4.8
	Native American	0.0	0.0	0.0	0.0	1.4	3.3	0.9
	White	82.1	92.9	93.3	65.0	78.5	83.5	67.4
	Other/Unknown/Missing	0.0	0.0	0.0	5.0	0.3	0.2	0.1
9e	Hispanic (% of 9a)	0.0	10.7	6.7	0.0	7.2	7.3	14.2
9f	Primary cause of ESRD (% of 9a; sums to 100%)							
	Diabetes	28.6	42.9	33.3	25.0	45.7	46.1	46.6
	Hypertension	32.1	25.0	13.3	15.0	20.6	19.8	30.6
	Primary glomerulonephritis	14.3	10.7	13.3	15.0	9.7	9.7	6.9
	Other/Missing	25.0	21.4	40.0	45.0	24.0	24.4	16.0
9g	Medical coverage (% of 9a; sums to 100%)							
	Employer group only	14.3	42.9	0.0	5.0	11.2	12.2	12.5
	Medicare only	17.9	7.1	26.7	55.0	29.8	28.8	28.6
	Medicaid only	10.7	7.1	0.0	15.0	10.5	9.5	10.7
	Medicare and Medicaid only	14.3	7.1	20.0	5.0	11.2	10.8	14.0
	Medicare and other	32.1	25.0	33.3	5.0	19.9	22.4	20.9
	Other/Unknown	7.1	7.1	13.3	10.0	11.9	10.0	6.3
	None	3.6	3.6	6.7	5.0	5.6	6.3	7.0
9h	Body Mass Index ^{*5}							
	Male	24.6	24.5	28.3	29.1	27.2	27.8	27.7
	Female	26.9	34.4	27.5	23.9	29.0	29.3	29.0
9i	Employment ^{*6}							
	Six months prior to ESRD treatment	0.0	46.2	33.3	0.0	26.4	24.8	21.1
	At first ESRD treatment	16.7	69.2	50.0	25.0	35.3	33.7	30.5
9j	Primary modality (% of 9a; sums to 100%)							
	Hemodialysis	100	96.4	100	100	90.0	87.7	90.5
	CAPD/CCPD	0.0	3.6	0.0	0.0	10.0	12.3	9.5
	Other/Unknown/Missing	0.0	0.0	0.0	0.0	0.0	0.0	0.0
9k	Number of incident hemodialysis patients (n)	28	27	15	20	18.4	15.9	16.2
9l	Access used at first outpatient dialysis (% of 9k; sums to 100%)							
	Arteriovenous fistula	21.4	33.3	33.3	20.0	24.5	24.7	16.9
	Arteriovenous graft	0.0	0.0	0.0	10.0	3.7	3.2	2.8
	Catheter	78.6	66.7	66.7	70.0	71.7	71.9	80.0
	Other/Unknown/Missing	0.0	0.0	0.0	0.0	0.1	0.2	0.3
9m	Arteriovenous fistula placed (% of 9k)	42.9	40.7	53.3	30.0	46.1	45.6	35.2
Average Lab Values Prior to Dialysis^{*3}								
9n	Hemoglobin (g/dL [3-18])	10.3	10.6	9.6	8.6	9.4	9.6	9.5
9o	Serum albumin (g/dL [0.8-6.0])	3.7	3.8	3.7	3.8	3.3	3.3	3.2

(continued)

2014 Dialysis Facility Report

NKC KIRKLAND KIDNEY CENTER State: WA Network: 16 CCN: 502516

TABLE 9 (cont.): Characteristics of New Dialysis Patients^{*1}, 2010-2013 (Form CMS-2728)

Measure Name	This Facility				Regional Averages ^{*2} , 2013		
	2010	2011	2012	2013	State	Network	U.S.
Average Lab Values Prior to Dialysis^{*3}							
9p Serum creatinine (mg/dL [2-33])	6.5	5.7	6.5	7.8	6.6	6.3	6.4
9q GFR (mL/min [0-60])	10.1	11.5	11.1	11.0	10.1	10.6	10.9
Care Prior to ESRD Therapy							
9r Received ESA prior to ESRD (% of 9a)	50.0	50.0	33.3	45.0	22.2	21.1	15.0
9s Pre-ESRD nephrologist care (% of 9a; sums to 100%)							
No	17.9	14.3	33.3	30.0	24.2	22.7	25.8
Yes, < 6 months	28.6	28.6	0.0	25.0	16.5	15.9	13.5
Yes, 6-12 months	10.7	14.3	6.7	5.0	15.8	17.9	18.7
Yes, > 12 months	42.9	42.9	60.0	40.0	40.9	39.7	29.1
Unknown/Missing	0.0	0.0	0.0	0.0	2.6	3.8	12.9
9t Informed of transplant options (% of 9a)	32.1	57.1	33.3	40.0	72.4	75.2	81.7
9u Patients not informed of transplant options (n)	19	12	10	11	5.2	4.1	2.7
9v Reason not informed (% of 9u; may not sum to 100%)							
Medically unfit	78.9	33.3	30.0	54.5	46.3	45.9	37.8
Unsuitable due to age	0.0	0.0	0.0	0.0	12.2	16.5	26.2
Psychologically unfit	0.0	8.3	10.0	0.0	5.6	3.9	3.7
Patient declined information	0.0	0.0	0.0	18.2	1.3	1.5	1.8
Patient has not been assessed	21.1	58.3	70.0	27.3	37.7	37.2	38.1
Comorbid Conditions							
9w Pre-existing comorbidity (% yes of 9a)							
Congestive heart failure	50.0	50.0	40.0	40.0	32.6	30.4	29.5
Atherosclerotic heart disease ^{*7}	42.9	46.4	40.0	40.0	20.6	22.2	16.1
Other cardiac disorder ^{*7}	14.3	25.0	26.7	20.0	18.0	17.4	19.5
CVD, CVA, TIA	17.9	3.6	0.0	5.0	9.0	9.0	8.7
Peripheral vascular disease	25.0	14.3	20.0	10.0	12.1	13.6	11.5
History of hypertension	92.9	82.1	100	80.0	87.7	86.4	87.6
Diabetes ^{*7}	39.3	53.6	53.3	45.0	57.4	58.5	61.3
Diabetes on insulin	28.6	42.9	40.0	35.0	43.0	42.4	40.4
COPD	14.3	3.6	13.3	0.0	9.9	10.5	9.6
Current smoker	3.6	10.7	6.7	5.0	9.4	9.1	6.3
Cancer	14.3	7.1	6.7	20.0	8.6	8.2	7.1
Alcohol dependence	0.0	0.0	0.0	5.0	1.3	1.6	1.5
Drug dependence	0.0	0.0	6.7	0.0	3.4	2.4	1.2
Inability to ambulate	7.1	0.0	20.0	0.0	4.4	4.6	6.9
Inability to transfer	0.0	0.0	6.7	0.0	1.7	1.6	3.8
9x Average number of comorbid conditions	3.5	3.4	3.8	3.1	3.2	3.2	3.1

n/a= not applicable

[*1] See *Guide, Section XII*.

[*2] Values are shown for the average facility.

[*3] For continuous variables, summaries include only responses in range indicated in brackets.

[*4] 'Asian' includes Indian sub-continent. 'Native American' includes Alaskan Native. 'White' includes Middle Eastern and Arabian.

[*5] The median BMI is computed for adult patients at least 20 years old.

[*6] Full-time, part-time, or student (% of 18-60 year olds).

[*7] 'Atherosclerotic heart disease' includes ischemic heart disease (coronary artery disease) and myocardial infarction. 'Other cardiac disorder' includes cardiac arrest, cardiac dysrhythmia, and pericarditis. 'Diabetes' includes patients with diabetes as the primary cause of ESRD.

2014 Dialysis Facility Report

NKC KIRKLAND KIDNEY CENTER State: WA Network: 16 CCN: 502516

TABLE 10: Summaries for All Dialysis Patients Treated as of December 31st of Each Year^{*1}, 2010-2013

Measure Name	This Facility				Regional Averages ^{*2} , 2013		
	2010	2011	2012	2013	State	Network	U.S.
10a Patients treated on 12/31 (n)	68	69	65	55	76.4	65.8	66.6
10b Average age (years)	66.8	67.3	67.3	63.8	61.3	61.3	61.6
10c Age (% of 10a; sums to 100%)							
< 18	0.0	0.0	0.0	0.0	0.4	0.3	0.3
18-64	38.2	37.7	36.9	45.5	54.6	54.3	55.1
65+	61.8	62.3	63.1	54.5	45.0	45.4	44.6
10d Female (% of 10a)	51.5	46.4	47.7	45.5	44.2	43.5	44.2
10e Race (% of 10a; sums to 100%) ^{*3}							
African American	7.4	7.2	7.7	10.9	12.1	8.7	36.7
Asian/Pacific Islander	13.2	13.0	15.4	9.1	13.5	9.7	5.4
Native American	0.0	0.0	0.0	0.0	1.8	3.6	1.3
White	79.4	79.7	76.9	80.0	72.2	77.7	55.8
Other/Unknown/Missing	0.0	0.0	0.0	0.0	0.3	0.3	0.7
10f Ethnicity (% of 10a; sums to 100%)							
Hispanic	2.9	2.9	3.1	3.6	10.1	9.9	16.7
Non-Hispanic	97.1	97.1	96.9	96.4	88.9	89.3	81.6
Unknown	0.0	0.0	0.0	0.0	1.0	0.8	1.8
10g Cause of ESRD (% of 10a; sums to 100%)							
Diabetes	39.7	46.4	44.6	45.5	44.8	43.9	44.5
Hypertension	25.0	26.1	23.1	16.4	18.4	18.2	28.9
Glomerulonephritis	8.8	8.7	12.3	12.7	14.7	15.3	10.8
Other/Unknown	25.0	17.4	20.0	23.6	21.0	21.6	14.0
Missing	1.5	1.4	0.0	1.8	1.1	1.1	1.7
10h Average duration of ESRD (years)	4.2	4.1	5.1	5.3	4.8	4.8	4.8
10i Years since start of ESRD (% of 10a; sums to 100%)							
< 1	20.6	20.3	6.2	14.5	16.6	17.1	16.2
1-2	25.0	21.7	18.5	10.9	18.0	18.3	17.0
2-3	13.2	21.7	16.9	16.4	15.1	14.1	13.8
3-6	26.5	18.8	33.8	34.5	25.6	26.2	27.0
6+	14.7	17.4	24.6	23.6	24.7	24.3	26.0
10j Nursing home patients (% of 10a) ^{*4}	13.2	2.9	9.2	20.0	15.0	13.8	14.7
10k Modality (% of 10a; sums to 100%)							
In-center hemodialysis	100	100	100	100	85.6	83.8	88.2
Home hemodialysis	0.0	0.0	0.0	0.0	3.5	2.8	1.9
Continuous ambulatory peritoneal dialysis	0.0	0.0	0.0	0.0	1.4	2.4	1.7
Continuous cycling peritoneal dialysis	0.0	0.0	0.0	0.0	9.2	10.5	7.8
Other modality ^{*5}	0.0	0.0	0.0	0.0	0.3	0.4	0.4

n/a = not applicable

[*1] See Guide, Section XIII.

[*2] Values are shown for the average facility.

[*3] 'Asian' includes Indian sub-continent. 'Native American' includes Alaskan Native. 'White' includes Middle Eastern and Arabian.

[*4] Includes patients who were also treated by a nursing facility at any time during the year. The source of nursing facility history of patients is the Nursing Home Minimum Dataset.

[*5] Other modality includes other dialysis, uncertain modality, and patients not on dialysis but still temporarily assigned to the facility (discontinued dialysis, recovered renal function, and lost to follow up).

2014 Dialysis Facility Report

NKC KIRKLAND KIDNEY CENTER State: WA Network: 16 CCN: 502516

TABLE 11: Comorbidities Reported on Medicare Claims for Medicare Dialysis Patients Treated as of December 31st of Each Year^{*1}, 2010-2013

Measure Name	This Facility				Regional Averages ^{*2} , 2013		
	2010	2011	2012	2013	State	Network	U.S.
11a Medicare dialysis patients on 12/31 (n)	56	53	54	45	59.9	50.6	51.8
11b Comorbidity (% yes of 11a)							
Infections							
AIDS/HIV positive	0.0	0.0	0.0	0.0	0.7	0.5	1.8
Dialysis access-related	7.1	9.4	16.7	13.3	14.4	14.5	14.6
Hepatitis B	0.0	0.0	0.0	2.2	1.0	0.9	2.9
Hepatitis other	3.6	3.8	1.9	2.2	6.2	5.4	6.3
Metastatic	5.4	5.7	5.6	11.1	4.6	4.2	4.0
Pneumonia	7.1	9.4	9.3	15.6	6.1	5.9	5.8
Tuberculosis	0.0	0.0	0.0	0.0	0.6	0.5	0.6
Other	35.7	49.1	59.3	62.2	40.8	40.4	45.3
Cardiovascular							
Cardiac arrest	1.8	1.9	1.9	0.0	1.7	1.6	1.6
Cardiac dysrhythmia	35.7	47.2	44.4	53.3	34.7	34.7	36.8
Cerebrovascular disease	30.4	28.3	29.6	37.8	23.2	20.9	26.2
Congestive heart failure	58.9	71.7	70.4	60.0	46.0	45.6	51.0
Ischemic heart disease	50.0	62.3	68.5	68.9	41.1	42.0	49.2
Myocardial infarction	5.4	15.1	11.1	22.2	8.1	8.0	8.6
Peripheral vascular disease ^{*3}	53.6	56.6	61.1	51.1	37.9	36.3	42.9
Other							
Alcohol dependence	1.8	3.8	1.9	4.4	3.6	3.4	2.9
Anemia	3.6	7.5	5.6	4.4	4.6	4.9	8.8
Cancer	19.6	13.2	22.2	24.4	10.2	10.3	10.7
Chronic obstructive pulmonary disease	25.0	26.4	38.9	35.6	30.2	30.5	31.8
Diabetes	57.1	67.9	66.7	66.7	60.1	59.2	64.9
Drug dependence	1.8	7.5	13.0	8.9	4.8	4.6	2.4
Gastrointestinal tract bleeding	3.6	11.3	7.4	8.9	2.8	2.8	3.2
Hyperparathyroidism	96.4	96.2	98.1	95.6	91.1	88.1	89.0
11c Average number of comorbid conditions	5.0	5.9	6.3	6.5	4.7	4.7	5.1

n/a = not applicable

[*1] Based on patients with Medicare as primary insurer on 12/31 each year. See *Guide, Section XIV*.

[*2] Values are shown for the average facility.

[*3] Peripheral vascular disease includes venous, arterial and nonspecific peripheral vascular diseases.

TABLE 12: How Patients Were Assigned to This Facility and End of Year Patient Status^{*1}, 2010-2013

Measure Name	This Facility				Regional Averages ^{*2} , 2013		
	2010	2011	2012	2013	State	Network	U.S.
12a Number of patients placed in facility ^{*1} (n)	102	94	97	84	106.1	90.4	91.2
12b Initial patient placement for the year (% of 12a; sums to 100%)							
Continuing at facility on 01/01	68.6	72.3	71.1	77.4	69.6	69.7	70.6
Incident (new to ESRD)	22.5	22.3	14.4	17.9	18.4	18.7	18.1
Transferred into facility	8.8	5.3	14.4	4.8	12.0	11.6	11.4
12c Patient status at end of year (% of 12a; sums to 100%)							
Alive in this facility on 12/31	66.7	73.4	67.0	65.5	72.0	72.8	73.0
Alive in another facility on 12/31	10.8	5.3	8.2	8.3	9.1	8.5	8.4
Received a transplant	3.9	8.5	5.2	3.6	3.5	3.2	2.4
Died; death attributed to this facility	15.7	8.5	15.5	19.0	12.6	12.5	12.6
Died; death attributed to another facility	2.0	2.1	2.1	2.4	1.1	1.1	1.3
Other ^{*3}	1.0	2.1	2.1	1.2	1.7	2.0	2.2

[*1] Patient assignment for Tables 1, 2, 3, 10, 11 and 12 only. See *Guide, Section XV*.

[*2] Values are shown for the average facility.

[*3] Also includes dialysis unrelated deaths. Dialysis unrelated deaths are not attributed to any facility for the purposes of the mortality calculations in this report.

2014 Dialysis Facility Report

NKC KIRKLAND KIDNEY CENTER State: WA Network: 16 CCN: 502516

TABLE 13: Patient and Staff Counts from the Annual Facility Survey (Form CMS-2744) *¹, 2010-2013

Measure Name	This Facility				Regional Averages * ² , 2013		
	2010	2011	2012	2013	State	Network	U.S.
Patients Treated During the Year							
13a Patients treated during year (n)	121	123	117	114	121.7	104.9	105.1
13b Incident patients (% of 13a)	25.6	22.8	12.8	18.4	16.3	16.8	16.7
13c Transferred into facility (% of 13a)	8.3	10.6	12.8	14.0	17.6	17.2	16.1
13d Transferred out of facility (% of 13a)	16.5	13.8	14.5	20.2	16.4	16.4	15.9
Patients Treated on 12/31							
13e Patients treated (n)	77	86	77	70	82.8	71.0	71.7
13f Patient modality (n; sums to 13e)							
In-center HD	77	86	77	70	71.1	59.9	63.5
Frequency <= 4 times per week	77	86	77	70	71.1	59.8	63.5
Frequency > 4 times per week	0	0	0	0	0.1	0.0	0.0
In-center CAPD * ³	0	0	0	0	0.0	0.0	0.0
In-center CCPD * ³	0	0	0	0	0.0	0.0	0.0
In-center Other * ³	0	0	0	0	0.0	0.0	0.0
Home HD	0	0	0	0	2.7	1.9	1.3
Frequency <= 4 times per week	0	0	0	0	0.3	0.3	0.5
Frequency > 4 times per week	0	0	0	0	2.4	1.7	0.8
Home CAPD	0	0	0	0	1.3	1.9	1.4
Home CCPD	0	0	0	0	7.6	7.4	5.5
Home Other * ³	0	0	0	0	0.0	0.0	0.0
13g Vocational rehabilitation: Patients aged 18-54 (n)	17	17	16	21	25.0	21.3	21.4
Employed (full or part-time) (% of 13g)	41.2	47.1	43.8	33.3	24.3	23.3	13.1
Attending school (full or part-time) (% of 13g)	0.0	0.0	0.0	0.0	3.3	3.5	1.0
13h Medicare eligibility status (% of 13e; sums to 100% * ⁴)							
Medicare	81.8	73.3	77.9	78.6	86.3	88.4	83.1
Medicare application pending	11.7	19.8	3.9	0.0	1.4	1.4	2.0
Non-Medicare	6.5	7.0	18.2	21.4	12.3	10.2	14.9
Facility Staffing on 12/31 *⁵							
13i Total full and part time staff positions (n)	20	23	18	21	19.1	16.3	14.5
13j Staff positions by type (n; sums to 13i)							
Full time nurse * ⁶	3	7	5	5	4.9	4.8	5.0
Full time patient care technician	5	7	0	4	7.1	6.3	5.6
Full time renal dietician	0	0	0	0	0.5	0.5	0.6
Full time social worker	0	0	0	0	0.5	0.5	0.6
Part time nurse * ⁶	4	2	4	3	2.3	1.4	0.9
Part time patient care technician	6	5	7	7	2.4	1.4	0.7
Part time renal dietician	1	1	1	1	0.7	0.7	0.6
Part time social worker	1	1	1	1	0.7	0.7	0.5

*¹ See Guide, Section XVI

*² Values are shown for the average facility.

*³ Due to rounding, regional average may be slightly greater than 0 (<0.05).

*⁴ Values may not sum to exactly 100% because of unknown Medicare status.

*⁵ Data as of June 24, 2014. A *full time position* is defined as a position with at least 32 hours of employment per week, and a *part time position* is defined as a position with less than 32 hours of employment per week (includes positions that were opened but not filled on this date).

*⁶ Nursing staff includes registered nurse, licensed practical nurse, vocational nurse, or advanced practice nurse degree.

2014 Dialysis Facility Report

NKC KIRKLAND KIDNEY CENTER State: WA Network: 16 CCN: 502516

TABLE 14: CROWNWeb Clinical Data ^{*1}, May 2012-2013

Measure Name	This Facility				Regional Averages ^{*2}		
	2010	2011	2012	2013	State	Network	U.S.
						2013	
14a Eligible patients (n) ^{*3}	.	.	75	78	100.1	85.3	85.9
14b Eligible patient-months (n) ^{*4}	.	.	518	643	873.4	743.4	755.5
14c Eligible HD patients (n) ^{*5}	.	.	75	78	89.8	74.8	79.3
14d Eligible HD patient-months (n) ^{*4}	.	.	518	643	781.1	646.7	696.8
14e Eligible PD patients (n) ^{*5}	.	.	0	0	23.6	21.9	20.4
14f Eligible PD patient-months (n) ^{*4}	.	.	0	0	182.9	171.4	160.0
Hemodialysis Adequacy							
14g Eligible HD Kt/V patients (n) ^{*7}	.	.	71	78	77.1	61.4	61.7
14h Eligible HD Kt/V patient-months (n) ^{*7}	.	.	475	543	552.3	428.1	456.7
14i Average Kt/V ^{*6} (average of 14h) ^{*7}	.	.	1.7	1.7	1.7	1.7	1.6
14j Kt/V categories (% of 14h; sums to 100%) ^{*7}							
<1.2	.	.	2.1	1.7	2.4	2.4	2.2
1.2-<1.8	.	.	58.1	61.9	62.3	63.4	67.6
>=1.8	.	.	38.1	35.4	33.6	32.6	28.9
Missing/Out of range	.	.	1.7	1.1	1.7	1.5	1.2
14k Average normalized protein catabolic rate (nPCR) ^{*6} (average of 14d)	.	.	1.1	1.1	1.0	1.0	0.9
14l nPCR Missing/Out of range (% of 14d)	.	.	8.3	0.8	28.0	29.1	32.7
Peritoneal Dialysis Adequacy ^{*8}							
14m Average weekly Kt/V ^{*6} (average of 14f)	2.3	2.3	2.3
14n Weekly Kt/V categories (% of 14f; sums to 100%)							
<1.7	3.3	3.7	4.8
1.7-<2.5	40.4	45.2	48.9
>=2.5	19.8	22.7	20.2
Missing/Out of range	36.6	28.4	26.2
14o Average normalized protein catabolic rate (nPCR) ^{*6} (average of 14f)	0.9	0.9	0.9
14p nPCR Missing/Out of range (% of 14f)	69.6	59.1	56.5
Anemia							
14q Average hemoglobin ^{*6} (average of 14b)	.	.	10.6	10.5	10.8	10.9	10.8
14r Hemoglobin categories (% of 14b; sums to 100%)							
<10 g/dL	.	.	26.8	27.1	19.1	17.2	18.3
10-<11 g/dL	.	.	30.1	39.7	34.7	33.5	33.4
11-12 g/dL	.	.	27.6	27.1	28.5	29.0	27.4
>12 g/dL	.	.	9.7	6.2	12.1	13.3	11.2
Missing/Out of range	.	.	5.8	0.0	5.6	7.0	9.7
14s ESA prescribed (% of 14b)	.	.	95.0	98.0	69.5	59.9	64.8

(continued)

2014 Dialysis Facility Report

NKC KIRKLAND KIDNEY CENTER State: WA Network: 16 CCN: 502516

TABLE 14 (cont.): CROWNWeb Clinical Data ^{*1}, May 2012-2013

Measure Name	This Facility				Regional Averages ^{*2}		
	2010	2011	2012	2013	State	Network	U.S.
Iron							
2013							
14t Average reticulocyte hemoglobin content (CHr) ^{*6} (average of 14b)	33.1	33.4	30.7
14u CHr categories (% of 14b; sums to 100%)							
<29 pg	.	.	0.0	0.0	0.0	0.0	0.3
>=29 pg	.	.	0.0	0.0	0.6	1.7	1.5
Missing/Out of range	.	.	100	100	99.4	98.3	98.2
14v Average transferrin saturation (TSAT) ^{*6} (average of 14b)	.	.	32.8	29.4	31.2	31.5	32.3
14w TSAT categories (% of 14b; sums to 100%)							
<20%	.	.	6.2	12.0	10.4	10.8	10.3
>=20%	.	.	32.6	29.7	50.3	56.7	64.2
Missing/Out of range	.	.	61.2	58.3	39.4	32.5	25.5
14x Average ferritin ^{*6} (average of 14b)	.	.	1204	1196	889	861	854
14y Ferritin categories (% of 14b; sums to 100%)							
<200 ng/ml	.	.	0.0	0.0	2.1	2.6	2.4
>=200 ng/ml	.	.	39.6	42.8	46.7	46.0	46.0
Missing/Out of range	.	.	60.4	57.2	51.2	51.5	51.6
14z Intravenous iron prescribed (% of 14b)	.	.	82.4	90.7	54.8	46.3	46.6
14aa Oral iron prescribed (% of 14b)	.	.	0.2	0.8	2.2	2.0	1.2
Mineral Metabolism							
14ab Average phosphorous ^{*6} (average of 14b)	.	.	5.4	5.8	5.3	5.2	5.1
14ac Phosphorous categories (% of 14b; sums to 100%)							
<3.5 mg/dL	.	.	9.3	2.8	8.7	8.4	9.3
3.5-4.5 mg/dL	.	.	24.9	20.4	25.0	24.9	25.2
4.6-5.5 mg/dL	.	.	22.0	27.1	27.9	27.8	28.3
5.6-7.0 mg/dL	.	.	22.8	31.9	20.2	19.5	17.4
>7.0 mg/dL	.	.	15.3	17.7	12.0	11.3	9.5
Missing/Out of range	.	.	5.8	0.2	6.2	8.0	10.4
14ad Average calcium uncorrected ^{*6} (average of 14b)	.	.	9.1	9.1	9.0	9.0	9.0
14ae Calcium uncorrected categories (% of 14b; sums to 100%)							
<8.4 mg/dL	.	.	12.0	14.3	14.6	13.9	14.2
8.4-10.2 mg/dL	.	.	76.4	81.2	73.6	72.6	70.5
>10.2 mg/dL	.	.	5.8	4.4	4.7	4.6	4.1
Missing/Out of range	.	.	5.8	0.2	7.0	9.0	11.1

n/a = not applicable.

[*1] See *Guide, Section XVII*.

[*2] Values are shown for the average facility.

[*3] 14a includes those who switch between HD and PD during the month and patients for whom modality is unknown.

[*4] Patients may be counted up to 12 times per year.

[*5] Sum of eligible HD and PD patients may not add to 14a.

[*6] Based on in-range values; see *Guide* for range values.

[*7] Kt/V summaries are restricted to patients who dialyze thrice weekly and whose Kt/V calculation method is Daugirdas II or UKM.

[*8] The PD Adequacy section uses the most recent value over a 4-month look-back period. Therefore, reporting for PD in this table begins with August 2012 which includes a look-back through May 2012.

2014 Dialysis Facility Report

NKC KIRKLAND KIDNEY CENTER State: WA Network: 16 CCN: 502516

TABLE 15: Survey and Certification Activity^{*1}

Measure Name	This Facility	Regional Averages		
		State	Network	U.S.
15a Date of last survey	07/19/2011	n/a	n/a	n/a
15b Type of last survey	Recertification	n/a	n/a	n/a
15c Compliance condition after last survey	Meets requirements	n/a	n/a	n/a
15d Number of deficiencies cited at last survey				
Condition for coverage (CfC) deficiencies	0	0.3	0.3	0.3
Standard deficiencies	3	10.2	6.2	6.3
15e CfC deficiencies cited at last survey ^{*2}				
V100 Compliance with Fed., State, and Local Laws	No, not cited	0.0	0.0	0.0
V110 Infection Control	No, not cited	2.5	2.1	5.5
V175 Water and Dialysate Quality	No, not cited	5.0	5.9	3.7
V300 Reuse of Hemodialysis and Bloodlines	No, not cited	0.0	0.0	0.5
V400 Physical Environment	No, not cited	2.5	1.1	2.5
V450 Patient Rights	No, not cited	0.0	0.0	0.4
V500 Patient Assessment	No, not cited	1.3	1.6	2.6
V540 Patient Plan of Care	No, not cited	1.3	2.7	3.1
V580 Care at Home	No, not cited	0.0	0.5	0.5
V625 Quality Assessment & Performance Improvement	No, not cited	2.5	3.7	4.4
V660 Special Purpose Renal Dialysis Facilities	No, not cited	0.0	0.0	0.0
V675 Laboratory Services	No, not cited	0.0	0.0	0.0
V680 Personnel Qualifications	No, not cited	0.0	1.1	0.7
V710 Responsibilities of the Medical Director	No, not cited	2.5	3.2	4.0
V725 Medical Records	No, not cited	0.0	0.0	0.3
V750 Governance	No, not cited	8.8	5.9	3.6

n/a = not applicable

^[*1] See *Guide, Section XVIII*. Data on this table are from the facility's latest survey since January 2009. If your facility has not been surveyed since January 2009, facility-level data on this table will be missing.

^[*2] Regional values are the percentage of surveys that were cited for the respective CfC deficiency.

TABLE 16: Facility Information^{*1}, 2014

Characteristic	This Facility
Ownership	Nonprofit
Organization	NORTHWEST KIDNEY CENTERS
Initial Medicare certification date	04/29/1996
Number of stations ^{*2}	15
Services provided ^{*2}	Hemodialysis and Peritoneal Dialysis
CMS Certification Number (CCN) included in this report	502516
National Provider Identifier (NPI) ^{*3}	1912090531

^[*1] Information based on SIMS data as of March 31, 2014. See *Guide, Section XIX*.

^[*2] Information based on data available on DFC as of May 2014.

^[*3] Information based on CROWNWeb data as of December 2013. If missing, data were not available.