

Live. Learn. Hope.





226,195
dialysis treatments



1,421
patients in centers
and at home



15%
of our patients
give themselves
dialysis at home



2.8%
increase in
treatments overall



Live.
Learn.
Hope.

Our mission

To promote the optimal health, quality of life and independence of people with kidney disease through patient care, education and research.

Our vision

To be the model in our field.

On the cover from left to right: Roberta Chadwick, Masa Konishi and Damon Brown are among the patients who live healthy, independent lives thanks to Northwest Kidney Centers' services. Read their stories later in this report.

This page, top row: Barbra Dorris, patient at Kent, Christine Ker, peritoneal dialysis, **middle row:** Richard Crabb, patient at Totem Lake, **bottom row:** Diane Nelson, peritoneal dialysis, Rick Durden, transplant recipient.

49 years old and counting.

It's been an extraordinary year. Medicare introduced sweeping changes in its clinical and financial requirements for kidney dialysis. These are the biggest revisions in 40 years, affecting our care for every patient. We responded with a systematic effort to improve patient care while aligning payment and costs. As a result, we closed the year with quality measures above the national averages, and a solid financial performance that enables us to deliver significant benefits back to the community.

We appointed new senior medical leadership and new medical directors at five dialysis centers. Our medical leadership is seasoned and invigorated to guide us through challenges and improve quality.

Patient care, education, research.

We provided more than 226,000 dialysis treatments – in our 14 centers and in 11 local hospitals, as well as many treatments in homes, offices or on vacation by patients we trained to do it themselves. We expanded our continuum of care to include more classes for people who have just been diagnosed with serious kidney disease, and we introduced new services for those who have received a kidney transplant. The 3-year-old Kidney Research Institute continues to surpass expectations in terms of its productivity and success competing for grants. It is adding knowledge to the field that will improve the lives of kidney patients.

Fifty years, first in the world. In 2012 we will become the first outpatient dialysis organization anywhere to celebrate a half-century of service. In preparation, we have updated the look and feel of Northwest Kidney Centers' brand with a refreshed logo, contemporary colors, and images that show patients living in optimal health and quality of life. This report to you is the debut of the new brand that visually portrays Northwest Kidney Centers' spirit.

Thank you for your support. We are a nonprofit, and that means we are owned by you – our community. Your generosity sustains and inspires us.

Joyce F. Jackson
President and CEO



Roberta Chadwick



I live.

Roberta Chadwick's kidneys were damaged by an infection in 1983. That led, 25 years later, to dialysis. For three years, she tried both peritoneal dialysis at home, and visits to Northwest Kidney Centers at Auburn for hemodialysis. She found a kidney donor, but the donor discovered stones. Then a kidney from a deceased donor seemed promising, but as Roberta lay waiting the surgeon discovered potentially cancerous spots on it. Finally, Roberta received a transplant in July. She is regaining her energy and feels good. Although "retired," she manages rental homes and helps with her son's business.

We provided 226,195 dialysis treatments in fiscal year 2011.

We deliver about 80 percent of all dialysis care in our service area, King and Clallam counties. Our annual survey shows patient satisfaction is high. Staff turnover was a low 7 percent, ensuring continuity of care.

Medicare enacted regulatory changes more sweeping than any since 1973.

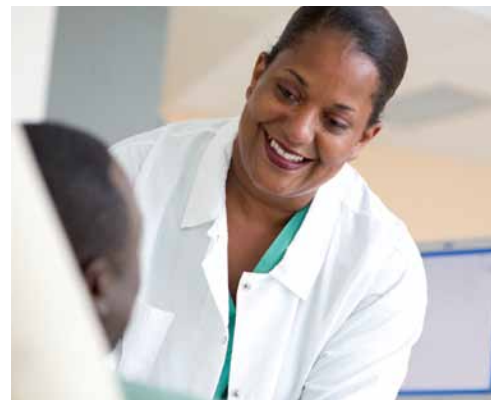
Most patients of any age are entitled to Medicare coverage for kidney dialysis; three-quarters of our patients rely on Medicare for their primary insurance.

By altering its payment system, Medicare shifted financial incentives and practice patterns industrywide. We found that longstanding Northwest Kidney Centers practices, such as conservative medication protocols and encouragement of home dialysis, stand us in good stead in the new payment environment. We held to these values in the past when it was bad for the bottom line, because it was good for patients. Now the new regulations encourage the rest of the industry to do what we've been doing all along.

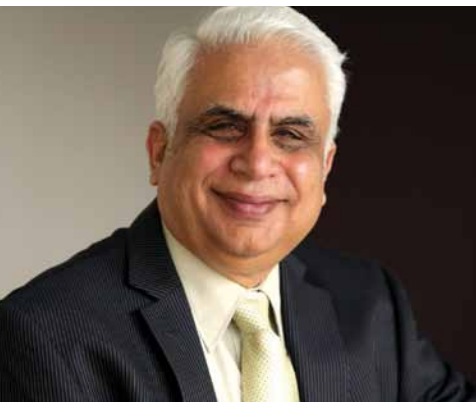
To meet the new requirements, maintain our high standard of care, and operate more efficiently, we updated computer systems that submit claims and bill for services. We improved productivity and made sure that we are using our resources wisely.



Laurence Gouveia's clearance for a kidney transplant this year was due in part to the Access to Dental project with volunteer dentists from the Seattle-King County Dental Society. Six people in the program have now received transplants.



Regina Ellison provides dialysis services at our SeaTac location.



*Dr. Suhail Ahmad
Chief Medical Officer*

Northwest Kidney Centers' new chief medical officer is Dr. Suhail Ahmad.

Dr. Suhail Ahmad has been medical director at our Scribner dialysis center near Northgate since 1985. He is known internationally for his expertise in dialysis technology and therapy; we know him for his dedication to making life better for patients. A physician, teacher and researcher, he began his career as a protégé of dialysis pioneer Dr. Belding Scribner, whose hardware invention at the University of Washington made it possible to maintain life indefinitely after kidney failure.

Working closely with nephrologists whose patients we treat, Dr. Ahmad has overseen many refinements to our clinical practices this year: standing orders for in-center and home dialysis patients, procedures for administering iron and anti-anemia drugs, changes in routine laboratory orders, and tests of new methods to maintain bone health.

Federal ratings show we are a leader in providing high quality care.

- **Longer lives.** Our mortality rate is 9 percent better than the national average.
- **More transplants.** We support kidney transplantation as the preferred treatment for many patients. Our transplant rate is 75 percent higher than the national average.
- **Less time in the hospital.** Our patients have 12 percent fewer hospital admissions than the national average. They spend an average of 10 days a year in the hospital, compared to 15 days nationwide.

Our kidney-focused pharmacy served 20 percent more patients this year.

Northwest Kidney Centers' pharmacy is rare in the nation – specializing in the complex medication requirements of people on dialysis or living with a kidney transplant. The pharmacy's growth is fueled by our increasingly active partnerships with the region's transplant surgery centers. We anticipate even more growth because of Medicare changes coming in 2014, so plans are under way to expand the pharmacy's current quarters at Haviland Pavilion, 700 Broadway in Seattle.



Patients enjoy the convenience of 24/7 ordering and home delivery at no extra charge from our pharmacy.

We prepared for the kidney disease epidemic to continue for a while.

Kidney disease surged 30 percent in the past decade. We hope that someday our public education and research about prevention will put us out of the patient care business, but in the meantime we are planning for expansion.

- **We remodeled our dialysis unit at 700 Broadway** in Seattle. That marks the first phase of an ongoing capital improvement project that will refurbish the building that's been our official headquarters since 1982.
- **We adapted a building in Renton** to provide more community dialysis capacity and serve as a hub for training people in self-dialysis at home.
- **We installed new systems in several centers** to mix chemicals with ultra-pure water to prepare dialysis solution more efficiently.
- **We received a state certificate of need**, the approval required to develop plans for a five-station dialysis center in Enumclaw.



373
new patients started dialysis

79
people received a kidney transplant

Roseni Roche, RN, West Seattle manager



13.6%
increase in treatments at hospitals

20%
more pharmacy users

Patsy Hoefel, transplant recipient



521
full-time equivalent staff members

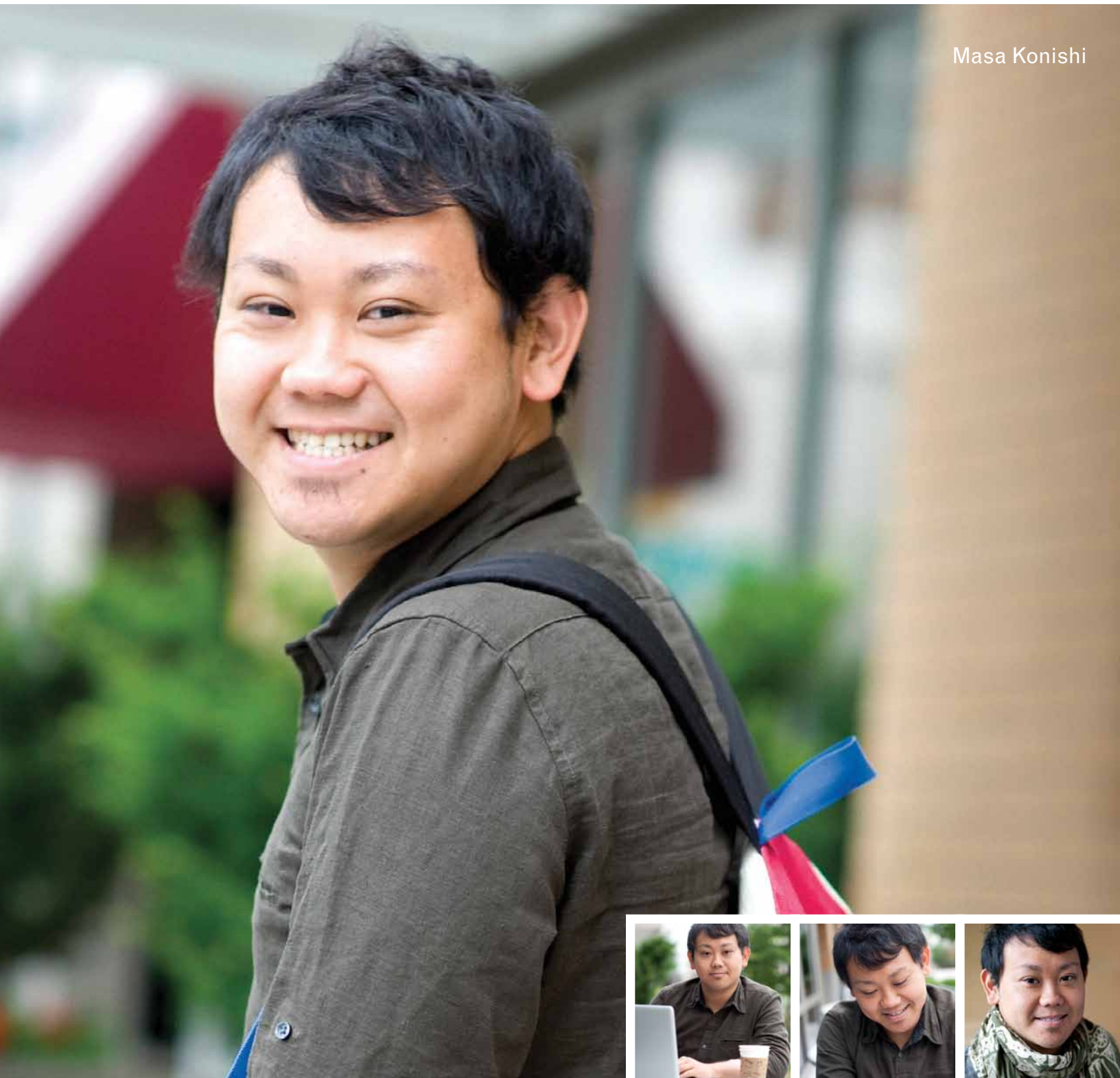
527
volunteers who donated 7,900 hours

John Morgan, patient at Kent, and son Jamen



Chan Manochamng, patient at SeaTac

Masa Konishi



I learn.

Masa Konishi learned at age 18 he had polycystic kidney disease. By the time he turned 25 he had moved from his native Japan to the Puget Sound area to attend school – and his kidneys stopped working. So Masa added new subjects to his studies: dialysis and healthy eating. “At the Lake City kidney center they have a nurse who speaks Japanese. Even though I’ve been here for years, English is still my second language. She really told me a lot of things until I understood.” Now completing a communications degree from Northwest University, he also interns for a local Japanese media company.

Often kidney disease has no symptoms.

Half of all patients don’t know they have a problem until they’re in a crisis and kidney failure is imminent. Faced with complicated treatment decisions, they appreciate education that helps them plan and prepare. Generous donors make our education and outreach programs possible.

We offer classes at no charge.

- **About a third of new patients attend our Choices class**, which covers treatment options for kidney failure. Those who attend are more likely to choose home dialysis for its lifestyle advantages, or to begin treatment in a center with a permanent blood access, which reduces risk of infection and improves survival.
- **This year we expanded our reach** with a new class, Living Well with a Transplant. Learning about medication management and reducing cardiovascular risk promotes long-term survival and health.

We reach out to people at higher risk.

- **We conducted free health screenings** at the ninth annual Kidney Health Fest for African American Families, our largest outreach event. Out of a record 725 attendees, 157 were screened. The sobering result: 28 percent had protein in their urine, an indicator of kidney disease.
- **In all, we participated in 58 community events**, reaching 11,501 people.

We speak out for better health policies.

Northwest Kidney Centers’ voice is heard and respected in discussions of kidney treatment and public policy.

- **We worked on three national coalitions** offering independent, nonprofit dialysis providers’ perspective to Congress and Medicare. We also fended off state budget cuts that would have shut off dialysis for some patients.
- **We are recognized as a dialysis authority.** Our leaders and patients were quoted this year in *Modern Healthcare*, *The Wall Street Journal* and *The Atlantic*, along with regional newspapers, radio and TV.



We’re hailed for making the community healthier.

Joyce Jackson, right, accepts the Community Health Leadership Award from Sarah Patterson, chair of the Washington State Hospital Association.

“Northwest Kidney Centers is a shining example of tackling a huge health problem upstream. Preventing and slowing the incidence of kidney disease is an enormously important community service. Northwest Kidney Centers has clearly made a difference in the community’s kidney health and in the lives of the people they serve.”

*~ Leo Greenawalt,
retired Washington State Hospital
Association president*

Damon Brown and son Julian



I hope.

When Damon Brown learned a decade ago that he needed dialysis, he figured research advances would eventually solve his kidney problems. "I was 26 and otherwise healthy," he said. "I thought that within 10 years they'd have artificial kidneys and that I'd be OK." Research has advanced, but not fast enough for Damon. He's now on peritoneal dialysis, awaiting a second kidney transplant. This time he's using Facebook to find a donor. Meanwhile, Damon and his wife, Bethany, still hope that research at Northwest Kidney Centers and the Kidney Research Institute will help their two children avoid kidney problems.

The Kidney Research Institute is now established as a scientific leader.

Founded in 2008 as a collaboration between Northwest Kidney Centers and UW Medicine, the Kidney Research Institute is dedicated to improving the lives of people with kidney disease.

- **Nearly 20 studies are under way** now, including multiple studies involving patients from Northwest Kidney Centers. A total of 1,108 patients in 11 regional institutions are enrolled as research subjects. Many more studies are in the planning phase.
- **Highly respected journals**, including *The New England Journal of Medicine* and the *Journal of the American Society of Nephrology*, published the institute's research findings this year.
- **More than \$20 million in grant funding** is in place to support kidney disease research, primarily from the National Institutes of Health.



Dr. Catherine Yeung conducts an experiment in the Kidney Research Institute cell culture facility.

It works on improvements that will have the biggest impact on the most people.

- **Fifty percent of studies have to do with cardiovascular complications.** That's because at every stage of kidney disease, patients are at higher risk for heart attack, heart rhythm problems that can be suddenly fatal, or stroke. Half the deaths of people on dialysis are related to heart disease. Kidney Research Institute scientists are actively studying the best ways to improve prevention, detection and treatment.
- **This year the Kidney Research Institute developed a registry** to allow interested patients to be notified of any studies for which they might qualify, created mechanisms to help researchers pilot-test clinical studies of promising new therapies, and established a blood and tissue bank to store and share samples for study in approved kidney disease research here and elsewhere, now and in the future.



I give.

Patricia Gaillard, above, is especially interested in kidney research. Like many donors, she is willing to pledge some of her estate to support the scientific quest for better tests and treatment and, one day, a cure for kidney disease. Patricia has joined our Heritage Society by designating Northwest Kidney Centers to receive a legacy gift. Others who attended our annual thank-you luncheon for Heritage Society donors this year are, from left, Ann Boeschoten, Annette Siverson and Doug Seto. The lunch program included an inside look at the most recent advances in kidney treatment.

Even in a year of economic challenges, loyal donors stood alongside us.

Generous community members contributed \$2.1 million to advance our patient care, education and research. Donors make it possible for us to provide community benefits beyond our basic budget. For example:

- **We invested in the next generation** of kidney specialist physicians by providing five fellowships for nephrologists doing an extra year of study at the University of Washington.
- **We took up the slack** when State of Washington budget cuts stopped the supply of nutritional supplements like Boost and Ensure that help dialysis patients living in poverty get enough protein in their diet.
- **We made a chaplain available** to comfort patients and family members in the special care unit, where we treat the most fragile patients.
- **We gave 366 emergency grants** to patients without money for food, housing or utility payments. About 44 percent of our patients have income below the poverty line.
- **We awarded scholarships** to eight patients and two staff members so they could return to school and train for career advancement.

More than 850 people – the most ever – attended the 2011 Breakfast of Hope, our annual fundraising event. Their individual contributions plus corporate sponsorships totaled \$399,000, also a record. Funds raised at the breakfast will help with the coming expansion of our unique kidney-specialist pharmacy and provide charity care in the coming year.

What you've read about in these pages is possible because you make it happen.

Our generous community steps up with financial gifts, volunteer energy and countless other shows of support. I extend my deepest thanks to you. Each patient's story represents thousands of people we've served in the past 49 years. Each of them reminds us why, with your help, we do this work.

~ Jane Pryor, CFRE

Vice President, development and public relations



Thelma Villalobos is one of eight patients who received a donor-funded scholarship from Northwest Kidney Centers. On dialysis since 2007, she looks forward to training for a better job.



*Jane Pryor, CFRE
Vice President,
development and public relations*

Northwest Kidney Centers exceeded 2011 budget goals.

We provided 2 percent more treatments than budgeted, with corresponding revenue. We maintained tight expense control, and we enjoyed strong investment performance and generous support from donors. We are on a firm footing as we enter 2012.

Sources and uses of revenue

Fiscal year ending June 30, 2011

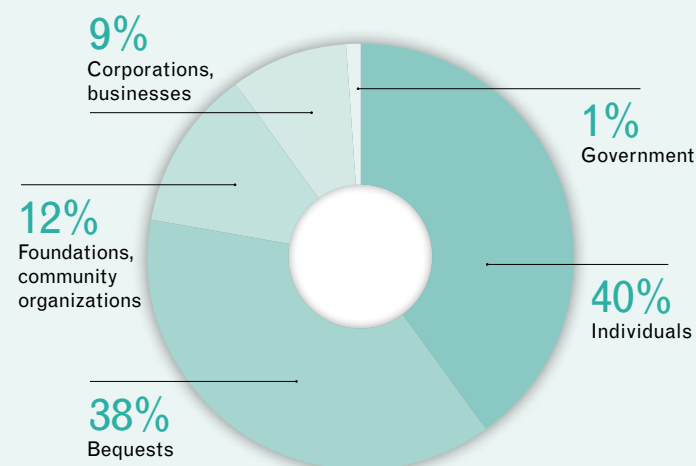
SOURCES OF REVENUE

Patient service revenue	\$91,748,052
Contributions	1,323,692
Restricted contributions	754,418
Investment income	2,236,433
Total	\$96,062,595

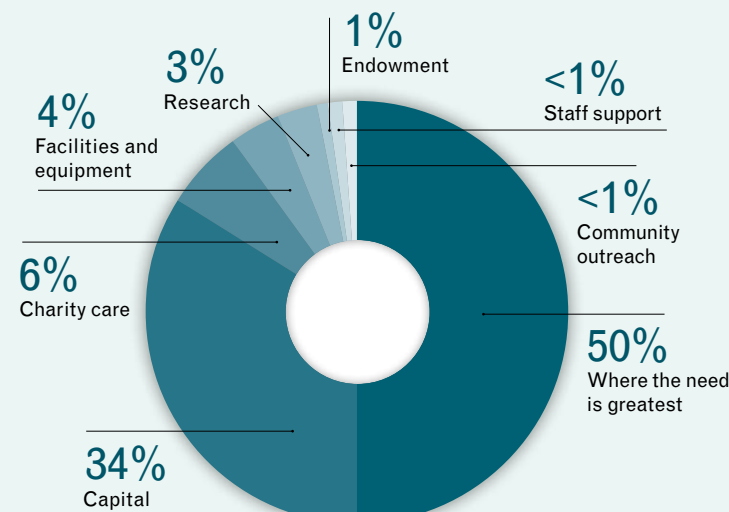
USES OF REVENUE

Uncompensated care	\$21,100,000
Salaries and benefits	36,360,195
Supplies and other expenses	30,417,779
Depreciation and interest	3,172,722
Provision for renovation, new equipment and new programs	5,011,899
Total	\$96,062,595

SOURCES OF CONTRIBUTIONS



DONOR DESIGNATIONS



Audited financial statements are available by request.

Northwest Kidney Centers is a 501(c)(3) not-for-profit, community-based health care provider. We spend 84 percent of our budget on direct patient care services.

Your generosity helps people with kidney disease live, learn and hope.

Thank you to all the dedicated donors who have given generously to support Northwest Kidney Centers in the fiscal year July 1, 2010 through June 30, 2011.

HERITAGE SOCIETY PLANNED GIFTS Current Members

- | | | | |
|--|--|--|--|
| Anonymous
Ed* and Katherine Boersma
Earl Buell
Carol A. Cramer
Cyrus Cryst, MD and Ann Merryfield
John F. Derrig
MaryAnn Eschbach
Irwin R. Etter
Alene G. "Pat" Farr, RN
Patricia Gaillard
Audrey Hollinger
Joyce F. Jackson
Dorothy Kewley
Louise D. Legaz
Bert Lundh
Ruellene Morganti
William L. Peckham
Dorothy Reimer
Colleen Swift Schafer
Matthew Seto
Duane Shield
Annette K. Siversen
Greg and Ruth Sneed, RN
Luth M. Tenorio, PhD, RN
In Memoriam
Anita Allison
Dorothy Anderson
Oscar Anderson
Tillie Anderson
Rosalie Bacior | Jacqueline Barnard
Edith Bengtson
Anna Bergman
Inez Bowman
Philip G. Bowman
Kathleen Branley
Mary Brill
Frederick Brookes
Clement Carlson
Margaret Chew
Catherine Chism
Belle Coan
V. Louise Companion
Katherine P. Conover
M. Genevieve Daley
Lena Descenzo
Linda Dong
Helen Douglass
Eleanor Englund
Virgie Fair
Bertha Feaster
Mary Fisher
Mildred Fitzsimons
Robert Flynn
Cyrus Glynne
C.K. Gee
Joy Hall
Norman Hansen
William Hartle
James Hayes
Florence Hellman
Katherine Hendricks
Warren Dale Hicks
Patricia Holzer
Margaret E. Houston | John E. Hundt
Dom Iacolucci
Gladys L. Jackson
Gladys Jacobs
Elizabeth Johnson
James Kahler
Masaru Kato
Eileen R. Kauffman
Cherry Kinoshita
Juanita R. Leggett
Dr. A.C. Linkletter
Nancy Lonsdale
Mary Jeanne Lord
Margaret Lundberg
Grace Macbeth
Jessie Macris
Muriel Martin
Dorothy Matthews
Stella Mattox
Ella McAfee
Rosamond P. McCredy
Jane McKelvy
Hugh A. McKevitt
Gladys McLaughlin
Frances Meader
Karen Mechler-Lovelace
Winifred Meier
Floria Moeller
John Moffitt
John and Susie Morganti
Sylvia "Jackie" Mraz
Merrill Musgrave
Rose Napoleon
John Nelson
Doris Nelson | Mary Nichols
Frances Nicholson
Elmer Nordstrom
Myrtle Ormond
George Payne
Dorothy Phillips
Jack A. Plewis
Gary Powlesland
Magni Prenovost
Margo Press
Jeanne Ridgway
Royal Rohrdanz
George Rosenberg
Willow Rosetti
Harriett Savage
Ruth Schaeff
Dorothy Stauffer
Betty Storie
Myrtle Struthers
Sue Stubbers
Tadao Sunohara
Clara Suthers
Ethel Taylor
Gary Tomei
Arthur Tuttle
Lorraine Vickery
Fern Wales
Marjorie Watt
Maurice Weber
Gladys Weinstein
Irene Wingart
Dorothy L. Wittenberg
Irene Wockner
Thomas Woerndle
Chan Lam Wong |
|--|--|--|--|

Bold type indicates people whose gifts we learned of this year.

- ### MOUNT RAINIER SOCIETY
- Gifts of \$100,000 +
- Estate of Elizabeth N. Johnson
 - Estate of John and Susie Morganti
 - Estate of Willow Rosetti
 - Gladys Rubinstein
 - Harry and Clare Cayo Wilson Trust

- ### MOUNT ADAMS SOCIETY
- Gifts of \$50,000 - \$99,999
- Gary and Parul Houlahan
 - Steve and Liz Huebner
 - Joyce and Craig Jackson, MD

- ### MOUNT BAKER SOCIETY
- Gifts of \$25,000 - \$49,999
- Estate of Catherine G. Chism
 - Hank and Lisa Florence, MD
 - John Moffitt Foundation

- ### MOUNT SHUKSAN SOCIETY
- Gifts of \$10,000 - \$24,999
- Anonymous
 - Aldrich & Associates, Inc.
 - Amgen, Inc.
 - Anderson Foundation
 - Connie and Lee Anderson
 - Paul M. Anderson Foundation
 - B. Braun Medical, Inc.

- Deborah A. Crabbe
- First Choice Health
- Fraternal Order of Eagles, Artificial Kidney Endowment Fund of Washington State
- Estate of Eileen R. Kauffman
- Alberta and John* Kennelly, MD
- Fu-Kuen Lin, PhD
- Lucky Seven Foundation
- Daniel and Jane Pryor
- Clinton C. Randolph
- Elizabeth B. Ruthford
- Sanofi Aventis U.S.
- Nancy H. Spaeth, RN
- Swedish Medical Center

- UW Medicine
 - Virginia Mason Medical Center
 - Jean S. Walkinshaw
 - David L. and Jeannette Wilde
- ### MOUNT ST. HELENS SOCIETY
- Gifts of \$5,000 - \$9,999
- Baxter Healthcare Corporation
 - Cybernius
 - Davis Wright Tremaine LLP
 - Fresenius Medical Care
 - Gambro Healthcare
 - Genentech
 - Louis and Frances Graber

- Glenn Hart
- Harold W. Henkel
- Joan and Michael Kelly, MD
- Kibble & Prentice, Inc.
- Leah Kiviat, MD
- KPMG
- Jean K. Lafromboise Foundation
- Todd Laney
- Irving A. Lassen Foundation
- Bert and Jarene Lundh
- Elizabeth A. Lynn Foundation
- Mar Cor Purification
- Microsoft Corporation



Brenda and Irwin Etter have created a planned gift to Northwest Kidney Centers.

Heritage Society

We are grateful to individuals who have notified us that they included Northwest Kidney Centers in their estate plans, or from whom we have received a planned gift. We honor those who have made a bequest in their will, established a life income charitable trust or annuity, named Northwest Kidney Centers as beneficiary of a life insurance policy or individual retirement account, or made any other planned gift.

*Indicates donors who are deceased.

Larry and Tricia Richards
Sabey Corporation
United Healthcare Services, Inc
US Bank
Art Van Der Wel*
Wells Fargo Insurance Services

MOUNT OLYMPUS SOCIETY

Gifts of \$1,000 - \$4,999

Anonymous (3)
Affymax, Inc.
David and Carol Ager
Mostafa and Melida Ahanchi
Astier M. Alem, MD
A. Eric Anderson, MD and Linda Anderson, MD
Ascend Medical LLC
Avaliant, LLC
Diana Barry, RN
Base2Digital & The IMS Company
BiNW
Dr. and Mrs. Christopher R. Blagg
Richard and Diane Bloch
Shirley and Albert Bloss, MD
Andrew Bor
Bill and Ann Bowden
Kristina Bowzer
Jon and Bobbe Bridge
Estate of Nancy M. Broches
David and Virginia Broudy, MD
Collette Bullis
Business Learning Incorporated
Gary and Catherine Bylund
Caridian BCT, Inc.
Edwin S. Chin, MD
City of Seattle
Clark/Kjos Architects LLC
Nathan and Rhonda Clark
Climate Systems LLC
Larry and Jody Clovis
Katheryn Cole
Maggie Colin, RN
Combined Federal Campaign of King County
Commerce Bank of Washington, NA
Convergent Technology Systems
Kevin Cosens
Cyrus Cryst, MD and Ann Merryfield
David Denhart
Denny Miller Associates
Val and Mason Elliott
MaryAnn Eschbach
Jonathan and Claudia Fast
Phelps and Christel Fisher
Florine D. Fleck
Brian and Julia Forcum

Fraternal Order of Eagles,
Port Angeles Aerie
Frank Fung, MD
GA Creative
Bill & Melinda Gates Foundation
Goodman Foundation
Teresa L. Graham, RN
Greene Wealth Management
Jon and June Hahn
Ken Hamm
Peter and Ann Hanson
Harry W. Herter
Harold and Mary Frances Hill
Deborah and Jonathan
Himmelfarb, MD
Susan Huang
IKAN
Paul and Lucy Isaki
Cecelia P. Johnson, RN
Miyoko Kaneta
Ted and Carol Kibble
Kick Spark Creative, LLC
King County Employee Giving Program
Craig Klinkam
Howard A. Lafferty
Konrad K. Lai
Cheryl Landis
Phil Lemoine
Bob Lemon and Lynne Miller
Polly Lenssen
Mr. and Mrs. Elmer I. Lindseth
Richard and Francine Loeb
Family Foundation
Ted* and Gloria Lomax
Col. and Mrs. James A. Manning
Lorene Martinson, RN
Arnold H. Mayer
David and Marcia McCracken
Mary McHugh and Anthony Olney
McKesson
Medcor Inc.
Tom and Brenda Melang
Steve and Peggy Meyers
Betsy Mickel
Miller Nash LLP
Thomas and Stacy Montemayor
Mike and Gerry Morrison, RN
Karen and Jamie Moyer
Tuyet M. Nguyen and Ngoc Cuong Hua
Nintendo of America, Inc.
North Star Electric, Inc.
NxStage Medical
Maureen O'Connor
Office of Minority Health, DHHS

Cara Oliver
Janet and Burton Orme, MD
Pathology Associates Medical Laboratories
William L. Peckham
Susan A. Peckham
Richard and Margaret Peterson
Mark Petrie/Copiers NW
Palmer Pollock
Premera Blue Cross
Puget Sound Blood Center
Puget Sound Kidney Centers
Riddell Williams PS
Raleigh Roark & Mary Elizabeth Preslar
Puget Sound Data Systems
RBC Capital Markets Corporation
Bernadette R. Rollozolo, RN
Alan and Gwen Ross
Colleen Swift Schafer
Tom and Melody Scherting
Seattle Children's
Dan and Rita Stene
Stirrett Johnsen, Inc.
John C. Stivelman, MD
Scott and Linda Strandjord
Patricia D. Taylor
Norge and Luth Tenorio, PhD, RN
Titus-Will Families Foundation
Marlene J. Trees
Triumph Expo & Events
Ned and Joyce Turner
Leanna Tyshler, MD
UBS Financial Services Inc.
United Stationers
Charitable Trust
University of Washington
Valley Medical Center
John Vandemay, RN
Vanguard Charitable Endowment Program
Ashok K. Varma
Mary Lou Winchell
Robert Winrow, MD
Betty Wockner
Wanda Wong and Mark Masterson
Randall and Maggie Yamanaka
Bessie Young, MD and Marco Mielcarek, MD

MOUNT SI SOCIETY

Gifts of \$500 - \$999

Advanced Renal Technologies
Paul and Anita Alexander
Andy and Betty Lou Anderson
Robin C. Anderson, DM

James P. Aubuchon, MD
Fannie Austin
John and Valerie Backus
Ballard Emblem Club No. 216
Bill and Liz Baluch
Sheila Bennett
Bryan Boeholt (BrN Engineering)
Andrew Brockenbrough, MD
Alice Byers
John E. Caner, MD
Howard and Yvette Chriscaden
Bonnie Collins, MD
Jay and Betty Cooley
Tyler Croshaw Family
Jane Davis, RN
Dominick and Aurora Driano
Marilyn Duncan
Joseph C. Eschbach
Dan Evans and Kendall Anderegg
Cynthia Flash
Joseph T. Flynn, MD
Craig Goodrich
RuthAnn Goularte
Governor's Interagency Council on Health Disparities
Sandra Greenlee
H2 Office Designs
Delton and Betty Halvorson, RN
Harry's Hounds
Tanya and Marquis Hart, MD
Leah Haseley, MD
Donna and Robert Hegstrom, MD
Michele Manning Herman
Irv Hoch
Jeff Hoch
Robert G. Homchick
Hope Heart Institute
Janet Horton
Janey Hynes, RN
Ann Jas
Martha M. John
Laura Jones, MD
Laura H. Larson
Kathy Lilienthal, RN
The Links Inc., Greater Seattle Chapter
Bruce and Nora Lynn
Alan MacDonald
Madison-Carnolia Cleaners, Inc.
Marangon Family
McDonald Enterprises
Donnell and Janice McGee
Janet McNaughton
Cindy M. McRoberts
Tim Morgan
Christyl Naasz

Deborah Naasz
Lisa Ngo and Danh M. Ngo, MD
Placida and Rex Ochi, MD
Dan and Jennifer O'Connor
Carol Oppen and Danny Wiederrick
Diana T. Perkinson, MD
Raimund Pichler, MD
Emily Pollock
Arnie and Deb Prentice
Lorraine Presley
Hyun Hee Rim
Annette and Austin Ross, Sr.
Russell Investments
Linda Sellers
Leslie Servidio
Stuart J. Shankland, MD
R. Suzen Shaw
Dana and Robert D. Sigley, MD
Toby Smith and Rosie Gaynor
Phil and Susie Stoller
Toshiko Sunohara
Jordan Symons, MD
Richard Turner
Under Nines Golf Association
United Way of Snohomish County
Charlene Veltri Jones
Alex Veress and Christine M. Logar, MD
Beat von Tscharnher
Robert J. Walerius
Kelly Wallace
Tatyana A. Weil
Whitaker Foundation
Tim and Hilary Williamson
J. P. and Gerda Wirz
Jimmy Wu, MD
Mike and Karen Wydick
Thomas and Sarah Zerkel

FIRST HILL SOCIETY

Gifts of \$100 - \$499

Anonymous (8)
Joyce M. Abel
Nancy Abramson
Itamar and Christine Abrass
Susan Adler
Sheena Aebig and Eric Taylor, MD
Maryam Afkarian, MD
Suhail Ahmad, MD
Bill Akers
Caroline Alabach
Amy Alering, RN
Razan R. Al-Kudsi, MD
Benjamin Allan
Roberta Allen

Mike and Shirley Allert
Lucille Almeleh
Charles E. Alpers, MD
Alpha Kappa Alpha Sorority
Chris and Felicia Alston
Samuel Amory
James Anderegg and Susan Hyde
Carolyn Anderman
Bob and Julie Anderson
Kara Anderson
Susan L. Anderson
Thelma Anderson
Virginia Anderson
Walter and Melinda Andrews
Julian and Eva Ansell
Approach Management Services, Inc.
Bert and Esther Arensberg
Col. and Mrs. John Armour
Scott and Sarah Armstrong
Robin Aschenbrenner
Karen Ashworth
Lee Atherton
Bridget Aumell
Angela Austin-Chappalle
Ned and Carol Backus
Alison Bryant
Dan and Carol Bagger
Bob Bagshaw
Cliff and Rosemary Bailey
Jane Baillie
Desiree M. Baker
Dick Bangert
Bank of America United Way Campaign
Neal Burkhardt
Nancy and James Burnell, MD
Robert Burr and Nancy Johnson Burr
Ed and Paulette Burrell
June Butler
Denyce Cahill
Gerald and Stella Cameron
Mary Belknap
Russell and Heidi Bennett
Lena Berg
Kenneth and Helen Bergman
Harry Berryman
Teresa Bigelow
Bio-Rad Laboratories
Cindy Black, RN
Larry Blackett
Jim and Theresa Blazek
William and Ann Bloch
Karol Bomsztyk, MD
Scott and Ravel Bond
Dionne Borden
Jerry and Carolyn Bosch
Sarah Moore Bostwick

Laura Bothel
Gerald Bourque
Gary Bowen
Kathy Bower
Jean Bowman
Earl and Kathy Bowyer
Barbara Boyd
Charlene Boyd
Robert and Muriel Boyd
Jerry and Marlene Brand
Michael Brand and Laurie Levine
Heidi Brandt, DDS
Connie Brault
Leslie and Shiela Braxton
Susan H. Brazier
Barbara Brewer, RN
Adam and Stephanie Britton
Marilyn D. Broches
Ben Brodie
Jerry and Cathy Brodie
Chuiwei Bronson
Fred and Celia Brown
Timothy Brown
Larry Brugge
Ivory and Margaret Brummet
Brutzman's Office Solutions
Alison Martin, PS
Donald Buchanan
David D. Buck
Robert Bumpus
Martha Burch
Burgess-Hunt Family
Anneke Burgess
Julie Burke
Neal Burkhardt
Nancy and James Burnell, MD
Robert Burr and Nancy Johnson Burr
Ed and Paulette Burrell
June Butler
Denyce Cahill
Gerald and Stella Cameron
Mary Belknap
Russell and Heidi Bennett
Lena Berg
Kenneth and Helen Bergman
Harry Berryman
Teresa Bigelow
Bio-Rad Laboratories
Cindy Black, RN
Larry Blackett
Jim and Theresa Blazek
William and Ann Bloch
Karol Bomsztyk, MD
Scott and Ravel Bond
Dionne Borden
Jerry and Carolyn Bosch
Sarah Moore Bostwick

and Dickinson Lam
A. Zerne Chapman
Susan E. Chapman
Victoria B. Chappell, RN
Charitable Auto Resources Inc
John Chelico
Desmond and Paulina Cheung
Tony Chinn and Edna Golla
Judge Mark Chow
Tassie Christopher
Craig Cizek
Chuckals Office Products
Bruce, Cindy & Austin Clark
Linda Clark
Maurice Classen
Robin L. Clawson
Richard Claxton
Arne and Gwen Cleveland
Ron and Nancy Clickenbeard
Dennis and Sharline Close
Denise Cobb, RN
Jay and Jan Cockrum
Jack and Margaret Cole
Sara Colic
Thomas M. Collins
Amy Collis and Steve Houmes
Deborah Colombi
Lane Colvig
Combined Federal Campaign of South Puget Sound
Brent Combs
Complete Office
Carolyn Cone
Nancy E. Congleton
Timothy Connolly
Jodi Cooley
Richard P. Cooley
Elaine Cornell
Meghan Crandall
Lori Cray, PhD, RN
Dawn Crocheron
Linda J. Crome
Danielle Cross
Angela Culbert
Elizabeth J. Culver
John and Judith Curran
John Currie
Jean Daffern
James Dallas
Jan Davis and Marcy Kutok
Ian de Boer, MD
Eileen Del Donno
Chris and Bonnie Delecki
Delta Dental
Stephen DeMane
Densmore Street LLC
John and Jean Derrig

Edmund N. Diederichs
C. Edward and Marita L. Dillery
Lois M. Dillon
James M. Dodobara
Lawrence Dong
Doug and Jeri Donnelly
Michael and Mary Dooley, RN
Sarah J. Dore, RN
Fred and Harriette Dorkin
Michelle Driano and Paul Sackett
Edwin L. Du
Robert and Barbara Duffus
Frederick H. Duhring
Jeff and Sheri Dunn
Richard R. Dunn
Rags Durvasula, MD
Eagle's Point LLC
Jane Ebersberger
Bryan Edgar, MD and Linda Edgar, MD
Sonia Edmondson
Debra Ehri and Mark Harman
Albert Einstein, Jr., MD
Brent R. Eller
Bannon and Andrea Elliott
Ellis Family
Steven and Sharon Ellis
Kai Lim Eng
Dena Engen
Rod Erickson
Terry Escott
John Esposito
Richard and Sondra Evans
Jim Fair and Celeste Tell
Izumi Fairbanks
Alan and Jennifer Falcone
Martin Falsberg
Lisa Farnham
Karen S. Feldt
Hazel and George Fellendorf, MD
Sinikka Fitelson
Dennis Fleck
H. B. and Jean Folden
Catherine J. Foote
John Ford
Carolyn Forrester
Gene and Debbie Fournier
Deborah Fouts
Stephanie Fraser
Fraternal Order of Eagles,
West Seattle Auxiliary
Jennifer Freimund
David Frum
Dana Fuhrman
Yasuko T. Fukano
Dorothy Gai
Patricia W. Gaillard

Rob Gallion
Shinobu Gamou
Harlan C. Ganung
Laurie Gardner
Janet Garrow
Gartshore Window Treatments
Norbert and Gudrun Gegner
Joe and Lorelei Gelzer
Catherine Gerhart
Leta W. Gibson
Annette Gildemann
Wendy Giles
Gilmore Research Group
Joanna Glickler, PhD
Jean Godden
Bill Goe
Nelson Goes, MD
James Goldsmith
Ingrid Goodwin
Kristina Goodwin-Garnett
Marley and Lois Graham
Rose Mary Greene
Andrea Gregg
Peter C. Gregory, MD and Patricia Shaw, RN
Mary L. Grennan
Wayne Grider
Ted Griffin and Freda Zimmerman-Griffin
Linda Gromko, MD
Dan Gualtieri
Cheryl Gunderson
Bruce Gustafson
Paul and Judy Gwerder
Patricia Haaker
Phillip J. Haas
Hageman Family
Lynn Hagerman and Jim Hummer
Fredric Hale
Paul and Lisa Hall
Neil Halpern
Craig Halterman
Masaru and Jane Hamada
Hamilton Group LLC
Larry M. Hamilton
John and Sondra Hamley
Dan Hammes
Ray and Linda Hamnett
Virginia Handy
Jason A. Hanks
George D. Hansen, IV
Mikel B. Hansen
Scott Hansen
Scott and Pattel Hardman
Brian and Erika Hardy
Paulette J. Harris
Tim and Patricia Hart

Susan H. Hashimoto
Lori J. Hasselblad
Brooke Hawley
William and Ellen Hazzard
Jim and Anita Healy
Kathy Hellum
Stu Hennessey
Aaron Herold
Diane L. Heron, RN
Pamela Heron
Rene I. Herradura
Robert and Emma Herron
Michael Hertz
Robert and Ella Hess
Christina Hesse
Daniel and Merisa Heu-Weller
B.J. Higgins
Joe Higgins
Highline Medical Center
Dede Hill
Ann Marie Hillebrand
John Hines
Robert Hinman
Paula R. Hintz
Suzanne Hittman
Qui Ho
Nancy Hollinger
Jimmy and Valera Holst
Claudia Holzberger
Holzwarth Family
Honeywell International
Charity Matching
Kim H. Hong
Elnora Hookfin
David and Judith Hopkins
Ronald Hopkins
Richard Hopp
Michael Hori
Michael Horwath
Jacqueline Rose Hott, MD
Lawrence and Marion Hoyt
Kelly Hudkins-Loya
Rick and Barbara Hull
Linda Huse
John and Dorothy Hutter
Don and Cheryl Hyman
Robert and Eileen Iguchi
Italian Club of Seattle
Cameron Izadi
Jacobsen Family Foundation
Anita M. Jablonski, RN, PhD
Richard and Evelyn Jaffe
Robert D. Jaffe, MD and Susan J. Isaacson, DDS
Charles James
Gina Jang
Jesse Jasnay

J. Ashley Jefferson, MD
Young R. Jeong
Bruce and Janine Johnson
Douglas and Jane Johnson
Keith R. Johnson
Michael and Callie Johnson
Ray and Jean Johnson
Richard and Mary Johnson
Robert Johnson
Ashley Jones
Howard and Marie Jones
Steve and Kelly Jones
Mildred Jonville
R. Dru Jordan
David and Margaret Juenke
Todd Junker
JustGive.org
Kimberly S. Kaald
Otto and Solveig Kalleberg
Don and Aryls Kamstra
Chris and Kathy Kane
Pat Kano
Linda Kaufman
Francie Kay
Michael B. Keary
Amanda Kelly
Brian and Kimberly Kelly
Harold Kelly
Kevin Kelly
Jim and Nancy Kenagy
Bryan Kestenbaum, MD
Keyes Foundation
Shige Kikuchi
King County Medical Society
Erwin and Arlis Kipfer
Dennis and Janice Kirk
Florence Kirrage
Daniel Kivlahan and Dina Benedetti
Kleinfelder Group
Kelye Kneeland
John W. Knight
Patricia F. Knight, RN
Thomas and Charlene Ko
Penelope Koch
Lee A. Kopf
Richard and Harriet Korpela
Sheila Koyama and Alec Colovos
Deborah L. Kuhlman, RN
Shelly Kurtenbach
Scott and Ellen Kyono
Cynthia La Brec
Rich Lacher
Richard and Raquel Lackey
Ruth Lafferty
Lake City Emblem Club #189
Natalie Lamberjack

*Deceased



"In addition to the medical services, our social services really are devoted to supporting the patient. I don't know if you find that everywhere else." Ruth Sneed, RN

Greg and Ruth Sneed, planned gift donors. Ruth has worked as a registered nurse at Northwest Kidney Centers since 1973.



"The research aspect of the mission fascinated Walt, and it does me too. It's wonderful to see all the new possibilities for improved care."

Jean Walkinshaw, documentary producer, made a gift in memory of her husband, Walt, an attorney, fly-fisherman and early, longtime Northwest Kidney Centers trustee.

Justin and Pamela Lan
Marty and Sandy Landers
David and Joyce Lantz
Mark Lantz
Theresa Lapke
Francois Larrivee
Loretta J. Lawrence
David Lawson
Allyson M. Leavitt
David L. Lee, RN
Jennifer Lee Wu
Kathleen M. Lee
Wing-sze Lee
Leek Family
Louise D. Legaz
Myrna Lehr
Tom and Kathleen Lemly
Kelly Lennox
May Leong and
Rory MacLaysaght
Cameron Leonhard
David Levant
Judith L. Lew
Sue A. Lewis
W. Walter Liang
Zofia Lidzbarski
Roy and Bonny Liljebeck
Carmen R Lim-Buenbrazo
Tom Linde
Lynda Linse
John Liston
Rudolfo Lizama
Janet Llavore
Frances W. Lloyd
Michael and Colleen Loewen
Toni R. Long
Hoy W. Look
Lesley A. Louie
Carol Ann Lovegren
Archie and Barbara Lovre
Steven and Robb Lovre
Susan Seto Lui
Brandon Lundh
Matthew Lundh
Steve and Susan Lundh
Jill Irene Lunn
Joseph E. Lynam
Stephen and Jolene Lynch, RN
Robert Maas
Pam MacEwan
Merrilee A. MacLean
David and Lois Madsen
Jermaine Magnuson
Patricia Maguire, RN
L. Kathleen Mahan
Tracy Maida
Robert and Dahlia Mak

*Deceased

Don Mallett
Ralph and Lee Anne Malott
Claire F. Manning
Roderick Mar
Monte Marchetti
Christine and
William Marks, MD, PhD
Richard T. Marks
Dawn Marsh
Richard and Joanne Marson
Josh and Kari Marti
Yolanda Martinez
Mary Mahoney Professional
Nurses Organization
Chris and Shelley Marzetti
Marie Mason
Rob Matiko
Rep. Marcie Maxwell
Jason R. McArthur
Dorothy M. McCann
Susan K. McChesney
Patty McClintock
Dave and Jan McClinton
Sandy and Barbara McClinton
Paulie McCormack
Councilmember Joe McDermott
Adrien and Marlene McKiness
Darrell McKissic
Kenny Joe McMullen
Stanley and Lillian McMullin
Holly McNeill
Tom and Dianne McPherson
Susan McQueen
Rob and Cheryl McQuiston
Roger and Diane McRea
Merck & Co, Inc
Scott Merriman
Leslie Meserole
Patricia D. Messemer
Meucci & Associates
John and Irene Meulemans
Carl and Jacki Meurk
Liga Mezaraups
Suzanne Michael
Audrey Miller
Conrad Miller
Mark and Arlene Miller
Madeline Miller and Scott McKay
Milliman USA
Samson Million
Kenneth Milne
Dale and Gwen Milstead
Darryl and Patricia Milton
Bernie M. Minsk
Gordon Minty
Mitsubishi Tanabe

Pharma America, INC
Karen Mittleman and
Neil Hendrickson
MLA Engineering PLLC
Kenneth L. Moen
Denice E. Moewes
William and Setsuko
Montgomery
Mushroom and
Denise Montoya
Linda Moody
Christie Moon
Moore Ink PR
Alta Moore
James L. Moore
Sharon A. Moore
Rev. Gary J. Morelli
Joann Morgan
Joyce Morimoto, RN
Mike Moroney
Dave Morse
Judy Mousseau
Ernest Mueller
Ruth S. Munger
Bernardo Alfredo Munoz
Sharon L. Murphy
James and Celeste Mustello
Mutual of Enumclaw Insurance Co.
Betty Lou Myers
Phillip and Terry Myers
Tim and Kathleen Myers
Foundation
Joan and Larry Myhre
Dr. Lisa Nakamoto and the
staff at the Swedish Organ
Transplant Center
Karen Nakamura
Sallie Neilli
Barbara A. Nelson
Ray and Virginia Nelson
Yasmine Nelson
Barb and Gerald Nepom, MD, PhD
Network for Good
Kathy Neukirchen
Judy Ngo
Bon Van Nguyen and
Khang Nguyen
Gary Niehus
Cecil and Inga Nielsen
Pamela Niimi
Ray Nomura
Paul and Colleen Nowak
Howard and Susan Nye
Edith Nylund
Michele O'Connell
Paul and Anne O'Connor
O'Donnell Family

Mark O'Hara and
Karen Fernandez
Dina O'Leary
Hanne Olsen
Carin Olson and Mark Fondirk
Tom Olson
Ernie and Janice Omri, RN
Gerald and Janice Oppliger
Garnet Ormsby
Raymond Orndorff
Mark Osterhout
Jeanne Ostrander
Sharon M. Pahlka
Amalia Palma
Pape Material Handling
Alan and Lois Park
Paula Parks
David Patterson
Sarah H. Patterson
Noah Patton
Douglas Payne
Ray Robles, RN
Jay H. Pearson
R. Pearson
Russell and Lois Ann Pearson
Lynda Pennington
Michael and Susan Peskura
Connie and Michael Pete
Deborah Peterman and
Associates
Bill and Susan Peters
Marjorie D. Romero
Carol Rose and Edward Chulew
Austin T. Ross
Larry and Marit Ross
Melissa Rothfuss, RN
Holly Rowlette
Juana Royster, PhD
Jerome Rubin
Gail Runnfeldt
Rachel Ruth
Ann Ryan
David A. Sabey
Sacramento Region
Community Foundation
Kenneth and Bea Saito
Arie Salomon
Ray Sato
Larry and Arleen Schinke
Charles E. Schmidt
Harry and Gail Schneider
Stephanie Schneider
Schwab Charitable Fund
Bob and Vivian Schroth
Chris Scoles
Beth Seacord
Seattle Spine & Rehab Medicine
Daniel Pugel
Tom Punch
Anne Purcell

Steve Puryear
Gail Quigg
Radeke and Halu Family
Marge Raleigh and Jerry Kimball
Mimi Ramsey
Melina T. Randall, RN
Teresa Rattazzi, MD
Bergitta Reese
Don and Joanne Rehfeldt
Dana M. Reid
Donald and Jacquelyn Reiter
Randy Revelle
Pamela Rhoten
Ann Richardson
Jo Richardson
Lisa Richardson
Claudia L. Robbs
James* and Carol Robeck
Glenda V. Roberts
Anthony Robinson
Ray Robles, RN
Roseni P. Roche, RN
Lisa Rodriguez
Rudy Rodriguez, MD
Steve Roediger
Randy Rogers
John and Jean Rolfe
Pamela Rolfe
Ted and Shannon Romer
Marjorie D. Romero
Carol Rose and Edward Chulew
Austin T. Ross
Larry and Marit Ross
Melissa Rothfuss, RN
Holly Rowlette
Juana Royster, PhD
Jerome Rubin
Gail Runnfeldt
Rachel Ruth
Ann Ryan
David A. Sabey
Sacramento Region
Community Foundation
Kenneth and Bea Saito
Arie Salomon
Ray Sato
Larry and Arleen Schinke
Charles E. Schmidt
Harry and Gail Schneider
Stephanie Schneider
Schwab Charitable Fund
Bob and Vivian Schroth
Chris Scoles
Beth Seacord
Seattle Spine & Rehab Medicine
Daniel Pugel
Tom Punch
Anne Purcell

Leslie Seman, ARNP
Keith Seo
Richard Seroussi, MD
Alexandra Serpanos
Masao Lou Sesoko
Doug Seto
Teresa Severn-Schadee, RN
Bergitta Reese
Don and Joanne Rehfeldt
Dana M. Reid
Donald and Jacquelyn Reiter
Randy Revelle
Pamela Rhoten
Ann Richardson
Jo Richardson
Lisa Richardson
Claudia L. Robbs
James* and Carol Robeck
Glenda V. Roberts
Anthony Robinson
Ray Robles, RN
Roseni P. Roche, RN
Lisa Rodriguez
Rudy Rodriguez, MD
Steve Roediger
Randy Rogers
John and Jean Rolfe
Pamela Rolfe
Ted and Shannon Romer
Marjorie D. Romero
Carol Rose and Edward Chulew
Austin T. Ross
Larry and Marit Ross
Melissa Rothfuss, RN
Holly Rowlette
Juana Royster, PhD
Jerome Rubin
Gail Runnfeldt
Rachel Ruth
Ann Ryan
David A. Sabey
Sacramento Region
Community Foundation
Kenneth and Bea Saito
Arie Salomon
Ray Sato
Larry and Arleen Schinke
Charles E. Schmidt
Harry and Gail Schneider
Stephanie Schneider
Schwab Charitable Fund
Bob and Vivian Schroth
Chris Scoles
Beth Seacord
Seattle Spine & Rehab Medicine
Daniel Pugel
Tom Punch
Anne Purcell

Lawrence D. Stevens
Robert W. Stevens
Kristin Stockard
Richard and Donna Stone
Joan S. Storms
Jim Stout and Carolyn Anderman
Dennis and Kathleen Stremick
Kathryn A. Stucky
Shirley Suminggao, RN
Michael Sutters, MD
Dwight Sutton
Sarah Swartz
Aggie Sweeney
Gwen Sweeney
Randall and Jeanne Swift
Brad Tacher
Hironori Takahashi
John and Sue Talbot
Helen T. Tall
Julie Tall
George Taniwaki
Wesley Tao
Michael Tasch, MD
Aaron Tate
David P. Taylor, Jr.
Eric and Sheena Taylor
Celeste Tell
Victoria L. Terao
Mike and Toshi Teske, RN
Don Theophilus
Jim and Sara Thomas
Faye and Alvin Thompson, MD
Sedge and Sally Thomson
Heidi B. Thorson
John and Gina Timpani
Joan Tipple
Norma and Ken Titterington
RoseAnne M. Tombelaine
Daisy S. Tomita
Elise Topp
George C. Tostevin
Pamela Trask
Eric Trepanier
Ernie Trulson
Tony C. Tse
Sharon Tugwell, RN
Karie Turnage
Dave Turner
ElDoris Turner
Twin City Foods, Inc.
Karen L. Uitting
Umpqua Bank
Wendy Stauff
G. Hobart and Jo Ann Stebbins
John Steel
Ronald and Laura Stence
Edward and Sylvia Stern

*Deceased

Nick G. VanDerlinden
James and Marie Vanderveen
Mary Vannularid
Edna J. Varwig
Stephen Vessels
Susan L. Vestal
Carol Vipperman
Susan C. Vukich
Wayne and Lynn Wadnizak
Patricia W. Wahl, PhD
Sally A. Walker
Larry Wall
Tom W. Wall, PhD
Lynette E. Waller
Jean M. Walrond
WaterStone
Lesley C. Watson
Wear Your Music Charity Program
Albert and Lynda Weatherford
Michael Weaver
Ronald Weaver
Wesley Webb
Theresa L. Webster, RN
Jack F. Weeks
Nathan and Debra Weinberger
William and Judy Weinberger
Frederic S. and Martha S. Weiss
Tom Whitfield and Gail Adams
Donnelly and Robert Wilburn, MD
Larry and Darlene Wilder
Beverly Wilke
Katy Wilkens
Tim and JoAnne Lowery
Kathryn A. Williams
Kim R. Williams
Lavonne B. Williams
Vorn Willis
Willie Mae Willis
Bart Wilson
Michael Wilton
Sandra Winmill
Don and Lorraine Winsor
Amy Winston, DDS
Ken Withee
Michael and Carol Wolfe
Scott and Fiona Wolf
Dennis and Patty Wood
Don and Jolita Wood
Woodmont Library
David and Susan Woodrum
Bill and Erin Woods
Susan L. Woods, PhD
Gloria A. Woodward
Jerry and Nancy Worsham
Ann P. Wyckoff
Yakima Bindery
Yee Dental Laboratory

*Deceased

Penelope Yonge
Jannine Young
Rosa Young
Gerald Zander
Villamor G. Zapata
Ilan Zawadzki, MD
Stephen Zieniewicz

SILVER LINING SOCIETY
Thank you to the following individuals who make bi-weekly, monthly or quarterly contributions.

Cecelia P. Johnson, RN
Ashley Jones
Emiliah Kambarami-Sithole, RN
Francie Kay
Beth Kempton
Maureen Kennedy
Patricia F. Knight, RN
Howard A. Lafferty
Cheryl Landis
Laura H. Larson
David L. Lee, RN
Cameron Leonhard
Zofia Lidzbarski
Kathy Lilienthal, RN
Rudolfo Lizama
Lorene Martinson, RN
Marie Mason
Denise Matz
Dorothy M. McCann
Sally McCreight, RN
Donnell and Janice McGee
Janet McNaughton
Holly McNeill
Cindy M. McRoberts
Betsy Mickel
Thomas and Stacy Montemayor
Mike and Gerry Morrison, RN
Sharon L. Murphy
James and Celeste Mustello
Christyl Naasz
Deborah Naasz
Quynh Nguyen
Dan and Jennifer O'Connor
Carol Oppen
Amalia Palma
Marijana Pavlich
Jocelyn Pilapil
Joetta V. Pokorny
Palmer Pollock
Lorraine Presley
Katherine Prince
Daniel and Jane Pryor
Melina T. Randall, RN
Pamela Rhoten
Larry and Tricia Richards
Lisa Richardson
Roseni P. Roche, RN
Bernadette R. Rollolazo, RN
Theodore Romer
Paul and Donna Roof
Melissa Rothfuss, RN
Holly Rowlette
Naomi Salas
Cheryl Schnabel
Chris Scoles
Linda Sellers
Kristen A. Shaw

Matt and Lissette Shields
Elissa Skerbinc-Heller, RN
George R. Slater
Virginia Smith
Greg and Ruth Sneed, RN
Irene Sprague
Dodi Still
Richard and Donna Stone
Sarah Swartz
Loren J. Totusek
Pamela Trask
Karen L. Uitting
Jean Van Etten
John Vandermay, RN
Ashok K. Varma
Edna J. Varwig
Tatyana A. Weil
Judy and William Weinberger
Stephanie Williams
Scott and Fiona Wolf

WORKPLACE AND COMMUNITY CAMPAIGNS
Thank you to the individuals and corporations who donated through combined fund drives.

David Owen Hastings
Kick Spark Creative, LLC
Joan Lance
Lion Dance Group
Mike Nakamura Photography
Olympic Maid Service
Triumph Expo & Events
Ashok K. Varma
Verizon Wireless

IN-KIND GIFTS
A special thank you to those who donated products, equipment or services.

David Owen Hastings
Kick Spark Creative, LLC
Joan Lance
Lion Dance Group
Mike Nakamura Photography
Olympic Maid Service
Triumph Expo & Events
Ashok K. Varma
Verizon Wireless

TRIBUTES
Grateful thanks to families and friends of the following individuals for gifts made in their honor.

Mary S. Akada
Jack Armstrong
Lisa Armstrong
Fannie Austin
Melissa Baker
Lauri Bliss
Richard J. Bloch
Gary and Catherine Bylund
Tyler Croshaw
John F. Derrig
Dominick V. Driano
Sandra Driscoll
Valerie K. Elliott
Stewart Flax
Steven Gilbert
Elden Goe
Deanna Guay
John Haigh
Hatsumi Higa



“The unique thing is Northwest Kidney Centers’ drive to include people from the community to educate and to serve. Most important, Northwest Kidney Centers puts patients above profit.”

MaryAnn Eschbach, planned gift donor, whose late husband, Dr. Joseph W. Eschbach, made breakthroughs in kidney treatment. With her is their son Joseph C. Eschbach, a Northwest Kidney Centers trustee.



“It’s the care that Northwest Kidney Centers gives its patients that keeps me here. Kidney patients need constant care, and Northwest Kidney Centers delivers excellent care.”

Wanda Wong, banker and Northwest Kidney Centers Board member.

Patricia Hoefel	Joseph A. Boletti	Robert A. Goodspeed	Donna Lazo	Robert Rackers	Stephen M. Williams	Jawann Bennett	Cheryl Coleman	Lisa Florence, MD	Sara Hospodar	Louise Legaz	Ashley Moore-Steward
Joyce F. Jackson	Joseph J. Bollinger	Sylvia Goodwin	Eric Lee	Winston Ragan	Albert Winchell	Josh Bessex	Chris Coliella	Joseph Flynn, MD	Gary R. Houlahan	Lauri Leonetti	Evelyn Morris
Robert D. Jaffe	Ed Boersma	Ken Grax	Gerald Lehr	Lee Ray	Donald Wingfield	Kevin Bi	Bonnie Collins, MD	Adrian Fomby	Barry Howard	Cheryl Lewis	Lori Morris
Larry James	Daniel Bor	Ruth Gray	Ronald Leuning	Michael Reece	Dale D. Winkler	Scott Bieber, DO	Elaine Cornell	Gwen Ford	Bruce Howard	Dominick Lewis	Geraldine Morrison, RN
Paul Kaplan	Lorraine F. Bowen	Jean Gregg	Neva Locke	Lorraine Reynolds	Charlene Withers	Debra Bishop	Deborah Crabbe	Janice Foster	Josh Howland	Kianna Lewis	Maureen Morrison, ARNP
Michael R. Kelly, MD	Ronald Bowhay	Thomas Griffith	Ted L. Lomax	Chico Rials	Lew W. Witt	Emily Blachly	Mica Crisp	Jennifer Freimund	Steve Huebner	Dorothy Liwag	Mt. Zion Baptist Church
Patrick Leach	Alton Brand	Tom Griffith	Maye L. Louie	Cindy Rice	Myrtle I. Woods	Cindy Black, RN	Jennifer Cross	Cinthy Gallardo-Defaz	Katrina Hunt	Cecilia Locsin	Paulette Murphy
Jeff Lukehart	Melissa Bridgewater	Colleen Groeneveld	Susan Lunde	Melvin G. Rice	Cliff Wren	Rosemary Blackwell	Cyrus Cryst, MD	Steve Gappa	Kendra Hyatt	Chris Logar, MD	Lisa Nakamoto, MD
Mary Kay Major	Jacqueline J. Brookhart	Richard Gunderson	Cynthia Lynch	James A. Robeck	Haruko Yamada	Diane Bloch	Marilyn Cummings	Jeff Gepner	Amal Ibrahim	Devon Love	Amy Nelson
Col. James A. Manning	Barbara Brown	Rita N. Haaker	Scot L. Mabray	Harold K. Roe	Sharon Yamanaka	Rich Bloch	John Currie	Nikki Gepner	Anisa Ibrahim	Carol Lovegren	Colin Nelson
Cindy M. McRoberts	Donald F. Brown	Robert S. Hageman	James Mackerrow	Horace S. Romero	Juanita Yee	Will Blockson	Eric Dalke	John Gibson	Olabamiji Idowu	Betty Lowe	Virginia Netz
Betsy T. Mickel	Donald M. Brown	Eleanor Halfon	Terry L. Marconi	Glen Rose	Masako Yoshioka	Ajene Bomani-Robertson	Damascus Baptist Church	Fukuko Gilmore	Immaculate Conception Church	Adrianne Loyola	New Beginnings
Jennifer Miller	Lawrence Brown	Vern D. Hall	Alfred P. Manning	Michael Rumans	Florence Young	Jessica Borden	Dorender Dankwa	Ryan Gilmore	Lucy Isaki	Sophie Lu	Christian Fellowship
Troy Mink	Ed Bullis	Jacqueline E. Hampton	William S. Mar	Juanita Rush	Com Yun	Doris Boutain, PhD	Diana E. Daum	Denver Ginsey	Anita Jablonski, PhD, RN	Delmas Luedke	Laura Newcomb, RN
Alta Moore	Robert L. Bumpus	Ronald Hanada	Jim Marenakos	Connie Rutherford		Bill Bowden	Zach Davenport	Amanda Goll	Joyce F. Jackson	Richard Lukezic	Lonnie Newton
Jacquelyn A. Muller	Marcia Burns	Pina I. Hansen	Jim Mathieson	Stanley A. Schafer		Gary Bowen	Anthony M. Davis	Craig Goodrich	Muff Jacox	Bert Lundh	Danh Ngo, MD
David J. Niimi	Donald G. Burt	Nils Haramoto	James E. McClendon	Jeffrey Schainen		Ursula Bradford	Jeneva Davis	Angel Goodson	Robert Jaffe, MD	Chi Mac	Karli Nigg
Northwest Kidney Centers Staff	Jerry Butcher	Mary Hardy	John L. McCormack	Mary Scherf		Justice Bobbe Bridge, ret.	Kalebn Davis	Goodwill Missionary	Donald James	Tom Madsen	Esi Nkyekyo
William L. Peckham	Leslie Butler	Michael Harrison	Robert McInnis	Vincent P. Schmidt		Andrew Brockenbrough, MD	Kameryn Davis	Baptist Church	Vicki James	Thereze Mann	Ashley Nonato
Lisa Peterson	Violet Bylund	Joyce Harwood	Josh McMillen	Kiyoko A. Seto		Virginia Broudy, MD	Kenita Davis	Ruthann Goularte	Colleen Jancola	Frankie Manning	John Nonato
Sharon L. Peterson	Daniel Camacho	Forde H. Hewitt	Juanita McTarsney	David R. Sharpe		Rev. James Broughton	Stan M. Day	Michael Grant	Ashley Jefferson, MD	Col. James A. Manning	Aleser Northington
Maxima Rosales	John Campagnaro	Seth Hill	James A. Meiklejohn	Shirley Sheley		Rev. James Broughton	Kamilan Debram	Theresa Green	Rev. Robert Jeffrey	Jeanne Manning	Takako Ozaki
Steven Schwartz	John W. Campbell	Martin Holdener	Elsie Merdian	Samuel T. Shoji		Sheri Buckley	Jaclyn De La Rosa	Phillip Greening	C. Maxine Jenkins	Kristine Maramot	Jim Nye
Matthew M. Seto	Margaret Cannon	John Hollinger	Cecilia Merrick	William B. Singleton		Kathy Bulzomi	Kevin DeMahy	Peter Gregory, MD	Eu-wanda Jenkins	Todd Marangon	Chanda E. Oatis
Barbara J. Severson	Sylvia Carr	Tammi Hopkins	Robert Messemer	Gordon Sly		Collette Bullis	John Derrig	James Griffin	Henry Jenkins	Dawn Marsh	Grace B. Oatis
Gary R. Slater	Fred Chapman	Lynn Horn	Judy Miller	James A. Smith		James Burnell, MD	Zulley Diaz	Jeff Grove	Maxine Jenkins	Joanne Marson	Lola Oatis
Nancy H. Spaeth, RN	Bryan T. Christensen	Richard C. Houlahan	Melvin N. Miller	William R. Smith		Art Burrill	Rev. Mary Diggs-Hobson	Heather Gustus	Forrest Jespersen	Yolanda Martinez	Rex F. Ochi, MD
Maryam Rassoulain Stall	Donald C. Colter	James Hume	Marcheta Miner	Stella		Nancy Burrill	Rachael Dipzinski	Cathy Guy	Kaj Johansen, MD	Lorene Martinson, RN	Dan O'Connor
Henry E. "Ned" Turner	Beverly Corliss	John Hummel	Dorothy J. Mitchell	John H. Stern		Annette Burt	Medearis Dixon	David Hall	Frank Jones	Rob Matiko	Mike O'Connor
Don Uhde	Betty Cornaby	Emmy Hunziker	Jeremy Montoya	Margaret H. Stern		Nolan Bush	The Dolls Drill Team	Mandrell Hall	Joyce Jordan	Burt Mayer	Judith Ofosu
Paul Williams	Bernice B. Currie	Fred Moody	Fred Moody	Tom Summers		Belinda Butler-Bell	Mary Dooley	Betty Halvorson, RN	Margaret K.	Kenneth McCoy	Kendra Okoro
Vernon E. Zier	Joyce L. Davis	Joseph L. Mooney	Kim Ishii	Edmund Swaya		Catherine Bylund	Alex Doros	Ken Hamm	Emiliah Kambarami-Sithole, RN	Donnell McGee	Linda Olmstead
	Edna J. Dean	Ralph Moore	Paul H. Isho	George Tatarok		Gary Bylund	Sandra Driscoll	Dinny Hansen	Linda Kauffman	Janice McGee	Osodipe Olomo
	Marjorie Deeds	Ermon Morelli	Helen James	Shirley Telgenhoff		Denyce Cahill	Susan A. Dryden	Bruce Harper	Francie Kay	Kristen McHenry	Ernie Omri
	Lynne DeJaen	Susie Morganti	Martha Jasper	Darlene K. Thompson		Marilyn Gilbert	Debbie Dullenty, RN	Keonna Harris	Michael R. Kelly, MD	Mary McHugh	Jan Omri
	Benjamin M. Del Donno	John Morris	Katie Jean	Janice L. Thurber		Suhail Ahmad, MD	Deja Dunn	Margaret Harris	Sean Kelly	Adrien McKiness	Ayanna O'Neal
	Dolores M. Diederichs	Kenneth Morrison	Phillip B. Johnson	Doris Thurlow		Anita Alexander	Lois Eason	Joe Harrison	John M. Kennelly, MD*	Marlene McKiness	Trasvan O'Neal
	Patrick M. Dillon	James Murphy	Warren Jonville	Gregory Carnese		Azar Alexander	Eastern Star Queen of Sheba	Marquis Hart, MD	Ji Eun Kim	Aieesia McKinney	Bruce O'Neill, MD
	James Durrigan	Marian Murphy	Carroll Juenke	Alma Chambliss		Jason Alexander	Delores Eastman	Arthur Harvey	Charles Kimbrough	Kenny Joe McMullen	Chioma Onwuka
	Mervin Eaton	Eddie Nagai	Patrick J. Juhl	Jozette Chambliss		Kelly Allen-Hawkins	Sonia Edmondson	Wesley Hawkins	Florence Kirrage	Margaret McQuait	Chioma Onwuka
	William P. Eftendahl	Glenda Newman	Stacy Kalina	Sara Chanthaseny, RN		Connie Anderson, RN	Joycelyn Edwards	Tina Hayashi	Kayla Kjallin	Fredrika McQueen	Margaret Onwuka
	Sandra Eng	Ilene Nitardy	Einar Kalleberg	Diana Chao		Eric Anderson, MD	Patricia Egwuatu	Leah Haseley, MD	Katrine Knudsen	Cindy McRoberts	Burton Orme, MD
	Joseph W. Eschbach	John C. Noel	Phillip N. Kaplan	Nina Cheatham		Jaylyn Andrus	Stephanie Eitel	Robert Hegstrom, MD	Maria Koh	Fannie Meekins	Morwan Osman
	Howard Fallis	Shizuko Nobuyama	Masaru Kato	Angelica Arceo		James H. Trees	Edith Eilion	Emma Herron	Melanie Koh	Shela Mejia	Casey Overby
	Shirley Fiedler	Hideso Nomura	Jack E. Kelley	Kenneth Archie		Mark D. Turnage	Joseph C. Eschbach	Betty Hill	Matthew Krachunis	Thomas Melang	Sharon Pahlka
	Bill Almquist	Stig Nylin	John M. Kennelly, MD	Debbie & David Valiton		Karl Uhde	Kendra Estrada	Tracy Hilliard, PhD	Deborah Kuhlman, RN	Steve Meyers	Patrick Panlasigui
	Gerhard Amundson	Gary Nylund	Mitsuo Kikuchi	Charles W. Van Etten		Elba Arnal, RN	Brenda Etter	Jonathan Himmelfarb, MD	Douglas Mezaraupe	Liga Mezaraupe	Sanithia Parker
	Lloyd Amundson	Allen L. O'Farrell	Flinnor Kimmons	Donna Vega		Fannie Austin	Irwin Etter	Paula Hintz	Greg Kusumi	Betsy Mickel	Kelly Parks
	James Armitage	Marion Obermiller	Keith A. Klinck	Warren C. Vincent		Willie Austin	Daniel Evans	Claire Hiscox-Smith	Jean Kusumi, RN	Krasimira Mikhova	Sara Patillo
	Jerome Baer	Donald Volkman	Crevin L. Ko	Donald Volkman		John Backus	Jonathan Fast	Qui D. Ho	Kira Kusumi	Cyril Miller	Don Patin
	Barbara Barmuta	Nicky von Tschamer	Tad Fujita	Joetta Bailey		Bob Bagshaw	Charles Felder	Lane Hobbs	Mika Kusumi	Ross Milne	Ruby Patin
	John J. Basic	Matthew C. Wadnizak	Betsinda Gacek	Frank Baker		Joetta Bailey	Shawna Ferguson-Hill	Patsy Hoefel	Ray Kusumi	Greg Milner	Marijana Pavlich
	Tina Bayer	Albert Wahl	Huston Gallaher	Richard Bangert		Sonja Coffman	Tammera Ferguson	Winona Hollins-Hauge	Howard Lafferty	Monica Minor	Bill Peckham
	Stephen Beck	Marjorie Watt	Frank C. Gibson	Roda Barket		Ashley Cohen	First AME Church	Robert Homchick	Theresa Lam	Sheila Moak, RN	Judy Peterson
	Charles H. Berry	Marjorie Watt	Gerald Gipson	Heather Barr		Symantha Cola	Shanquell Fisher	Timothy Hong	Cheryl Landis	Patrick Mogg	Nancy Pham
	Farris B. Bishai	Colin A. Webb	John L. Gladney	Shawn Barron		Carol Lynn Cole	Maggie Fleet, MD	Darius Hooks	T.Y. Lau, PhD	Thomas Montemayor	Tuyen Pham
	Jon Bleha	Vicki L. Whitaker	Jack Glazer	Kristina Bellamy McClain		Dennis Cole	Hank Florence	Beverly Hopkins	Betty LaVigne	Lisa Moore	Robert Philip

VOLUNTEERS AND COMMUNITY EVENT SUPPORTERS

These special people answered our call to help at special events, serve on boards and councils, lend a hand in our dialysis centers and offices, and participate in our speakers' bureau.

MEMORIALS

Grateful thanks to families and friends of the following individuals, who will be fondly remembered now and always at Northwest Kidney Centers.

"Northwest Kidney Centers was the one charity my parents believed in, and I am trying to carry on their support for it."

Ruellene Morganti, planned gift donor. A brother's medical problems were the original inspiration for the family's philanthropy.

"My expertise is in health services and outreach to minority communities, along with chronic disease prevention. Working on Northwest Kidney Centers' Kidney Health Fest seemed natural for me."

Dr. Tracy Hilliard, who brought 25 Alpha Kappa Alpha sorority sisters to volunteer at the event she helped plan.

Raimund Pichler
 Simone Placentia
 Palmer Pollock
 Dennis Popp
 Melissa Powell
 Helen Preston
 Henrietta Price
 Jane Pryor
 Vilma Quijada, MD
 Stefan Rajchel
 Rebecca Ramer
 Paul Ramsey, MD
 Clint Randolph
 Donald Reiter
 Pam Rhoten
 Larry Richards
 Gary L. Richardson
 Stephen Riggins
 Carol Robeck
 Jim Robeck*
 Glenda Roberts
 Karen Rogers
 Jean Rolfe
 Bernadette Rollolazo, RN
 Holly Rowlette
 Marcus Rowlette
 Juana Royster, PhD
 Robin Rucker
 Charlotte M. Ruff
 Angela Russell
 Katrina Russell, RN
 Millie Russell, EdD
 Michael Ryan, MD
 Dave Sabey
 Jim Sable
 Annette Schley
 Mari Schneider
 Kat Schwegel
 Imani Sellers
 Linda Sellers
 Sierra Sellers
 Stephanie Sellers
 Doug Seto
 Beth Shanaman
 Stuart Shankland, MD
 William A. Sharp
 Jessica Sharrard
 Leslie Siggs
 Ron Siggs
 Sonja Sims
 Arn Slettebak
 Kathy Slettebak
 Syrenka L. Slettebak
 Natalie Sloan
 Joy Smarr
 Dora Smith
 Gabriella Smith

*Deceased

James W. Smith
 John L. Smith
 Michael H. Smith
 Nancy Colobong Smith, ARNP
 Steven Smith
 Tsitsi Smith
 Herman Snoddy
 Peggy Solan
 Andrew Somlyo, MD
 Southside Church of Christ
 Nancy Spaeth, RN
 Special Report
 Audrey Steward
 John Stivelman, MD
 Scott Strandjord
 Lacey Stroomer
 Calvin Sturdivant
 Michael Sutters, MD
 Tabernacle Missionary
 Baptist Church
 Marissa Tabile
 Allie Tabish
 George Taniwaki
 Elena Taylor
 Jamila Taylor
 Shirley Taylor, RN
 Tasha Teske, RN
 Audrey Thomas, RN
 Elizabeth Thomas, RN
 John Thomas
 Joycelyn Thomas
 Tevin Thomas
 Val Thomas Matson
 Alvin Thompson, MD
 Chelsey Thompson
 Crystal Tolbert Bell
 Anh Tran
 Diana T. Tran
 Vinnie Tran
 Sarah Joy Traylor
 Eric Trepanier
 Cecilia Trinh
 Sophia Trinh
 Eldoris Turner
 Ned Turner
 Robert C. Turner, RN
 Leanna Tyshler, MD
 Chika Ugwoaba
 Christian Valdez
 Yaquelin Valdivia
 Kamiah Valentine
 Mikey Vanderlinden
 John Vandermay, RN
 Ashok Varma
 Donna Vega*
 Jan Vigdor
 Van Vu

Cynthia Wainaina
 Jeriene Walberg
 Bob Walerius
 Ed Walker
 Freddie Walker
 Leslie Walker, MD
 Walker Chapel AME
 Kelly Wallace
 Colleen C. Walls
 Janet Walthew
 Ashley Warner
 Violet Warren
 Karsten Weathersby
 Tom Webb
 Louis Wei
 Ron Weightman
 Tai Weinman
 Tom West
 Vi West
 Billierose Wheeler, ARNP
 Cathy Whitaker
 Aleece White
 Cassandra White
 Robert White
 Gilbert Whitman
 David L. Wilde
 Katy Wilkens
 Estell Williams
 Irvin L. Williams
 Rene Williams
 Bob Winrow, MD
 Ron Wittcock
 Morgan Wong
 Wanda Wong
 Patty Wood
 Mattie V. Woodson
 Rev. Ashanti Wright
 Peter Xaybanha
 Shelley Xu
 Wing Sing Yip
 Adrienne Young
 Bessie Young, MD
 Eva Young
 Rosa Young
 Shirley Young
 Jackey Zhang
 Bill Zinck
 Glen Zinck
 Larry Zita

NAMED ENDOWMENTS
 An endowed fund is held in perpetuity and invested. Interest income provides a permanent source of support as designated by the donor. We gratefully acknowledge those who have established named endowments to sustain Northwest Kidney Centers' services and programs.

James W. Haviland
 Scholarship Endowment
 Christopher Blagg
 Scholarship Endowment
 Dorothy Phillips Endowment
 Haruko Yamada
 Research Endowment
 Julie Renee Fernandez
 Research Endowment
 Scribner Clinical
 Research Endowment
 Vincent A. Gervais
 Scholarship Endowment
 Hilja Alt Mangold
 Research Endowment
 Elmer Nordstrom Endowment
 Elenora Wydick
 Research Endowment
 Anna Briglio Driano Endowment
 Victor F. Knutzen Endowment
 NKC Endowment
 Kiyoko A. Seto
 Research Endowment
 Gladys L. Jackson Endowment
 Damian Potts
 Scholarship Endowment
 Michael R. Kelly, MD
 Endowment - Special Care

CASCADES SOCIETY – LIFETIME DONORS
 We are extremely grateful to those who have made lifetime gifts of exemplary amounts. Cumulative giving totals are as of the fiscal year ending June 30, 2011.

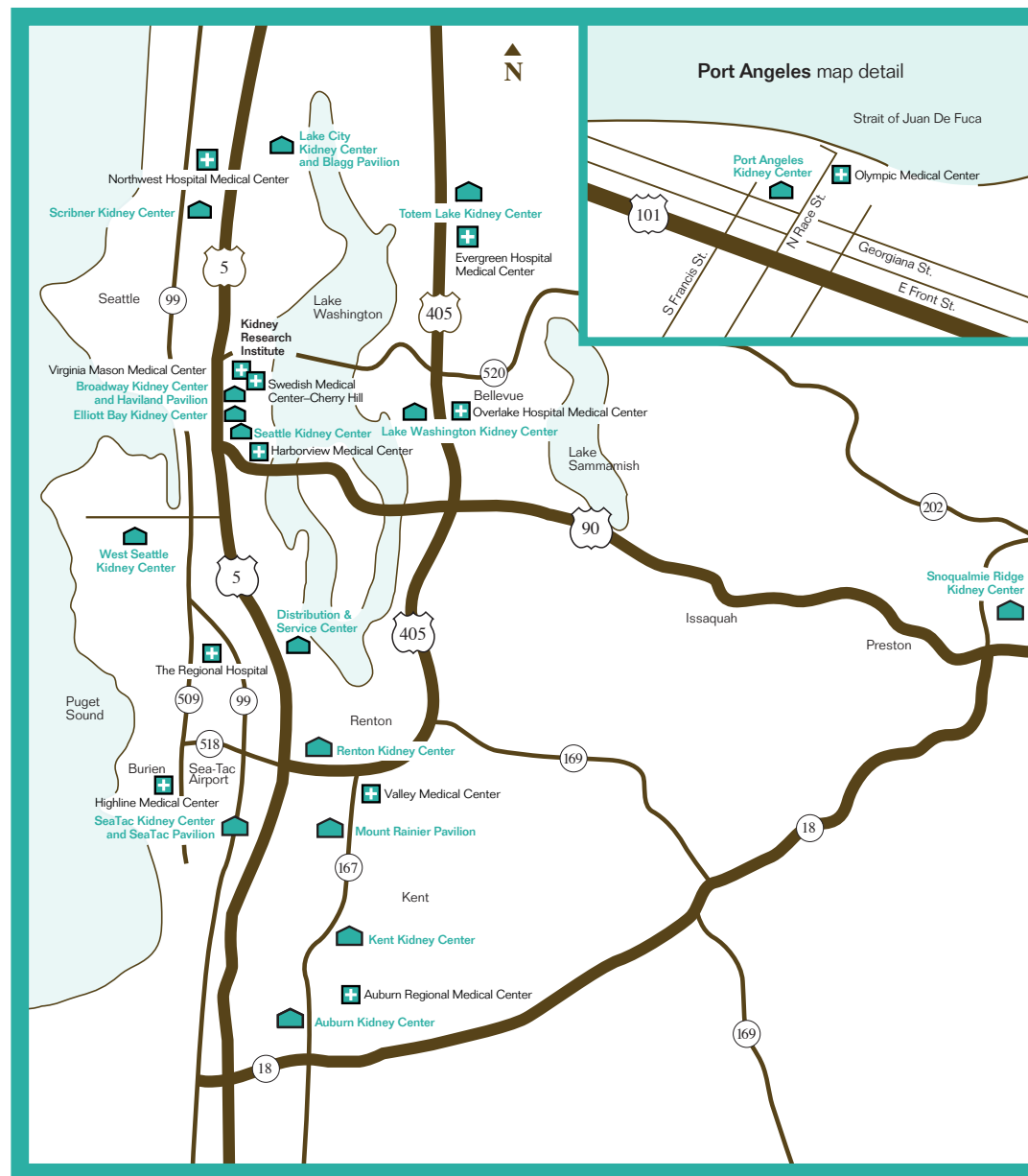
\$1,000,000 or more
 Estate of Alice Jones
 Estate of John and Margaret Nelson
 Gladys Rubinstein

\$500,000 - \$999,999
 Estate of Dorothy A. Anderson
 Estate of Catherine G. Chism
 Shirley M. McDonald Trust
 Gladys and Sam Rubinstein Foundation
 Harry and Clare Cayo Wilson Trust

\$250,000 - \$499,999
 Amgen, Inc.
 Estate of Jacqueline D. Barnard
 Estate of Phil Bowman
 Estate of Cyrus K. Gates
 Italian Club of Seattle
 Estate of Elizabeth N. Johnson
 Irving A. Lassen Foundation
 Estate of Juanita R. Leggett
 John Moffitt Foundation
 John J. Nelson Trust
 PACCAR Inc
 Elizabeth B. Ruthford
 United Way of King County
 E. Irene Wockner*

\$100,000 - \$249,999
 Anonymous (2)
 Aksys, Ltd.
 Alaska Kidney Foundation
 Anderson Foundation

Paul M. Anderson Foundation
 B. Braun Medical, Inc.
 Estate of Mary Brill
 Estate of Helen I. Eldad
 Employees Community Fund of Boeing Puget Sound
 Estate of Bertha Barrett Feaster
 Gary and Parul Houlahan
 Estate of Margaret E. Houston
 Estate of Gladys L. Jackson
 Joyce and Craig Jackson, MD
 Estate of Winifred Meier
 Estate of Rose Napoleon
 Mark Pigott
 Lucy Ransdell Auxiliary
 Estate of George Rosenberg
 Estate of Willow Rosetti
 Sam* and Gladys Rubinstein
 The Seattle Foundation
 Estate of Sue J. Stubbers
 Estate of Ethel H. Taylor
 TEW Foundation
 Estate of Arthur Tuttle
 Washington State Combined Fund Drive
 Estate of Maurice J. Weber



Live.
 Learn.
 Hope.

With support from generous donors, Northwest Kidney Centers serves patients at 14 dialysis centers in western Washington. We also deliver treatments in 11 area hospitals and assist 211 patients who give themselves dialysis at home.

BOARD OF TRUSTEES

Steve Huebner, chair
 David Wilde, vice chair
 Craig Goodrich, secretary/treasurer
 Virginia Broudy, MD
 Bonnie Collins, MD
 Joseph C. Eschbach, CFA
 Lisa Florence, MD
 Betty Halvorson
 Gary R. Houlahan
 Robert Jaffe, MD
 Michael R. Kelly, MD
 James A. Manning
 Vilma Quijada, MD
 Clint Randolph
 Stuart Shankland, MD
 Bob Walerius
 Kelly Wallace

Jack Cole
 Denver Ginsey
 Lucy Isaki
 Charles Kimbrough
 Burton Orme, MD
 William Peckham
 Robert Philip
 Dennis Popp
 Jean Rolfe
 Henry E. "Ned" Turner

NORTHWEST KIDNEY CENTERS FOUNDATION BOARD

Clint Randolph, chair
 Cyrus Cryst, MD, vice chair
 Katheryn Cole, secretary
 Gary R. Houlahan, treasurer
 Bert Lundh, at-large
 Wanda Wong, at-large
 Richard Bloch
 Deborah Crabbe
 Robert Hegstrom, MD
 Michael R. Kelly, MD
 Thomas E. Melang
 Rex Ochi, MD
 William Peckham
 Doug Seto
 Nancy Spaeth, RN

EMERITUS MEMBERS

Richard Bangert
 Dominick V. Driano
 Virginia Galle
 Gilbert M. Martin
 Betty Lou Myers
 Sharon L. Peterson

Charles Z. Smith
 Luth Tenorio, PhD, RN
 Henry E. "Ned" Turner

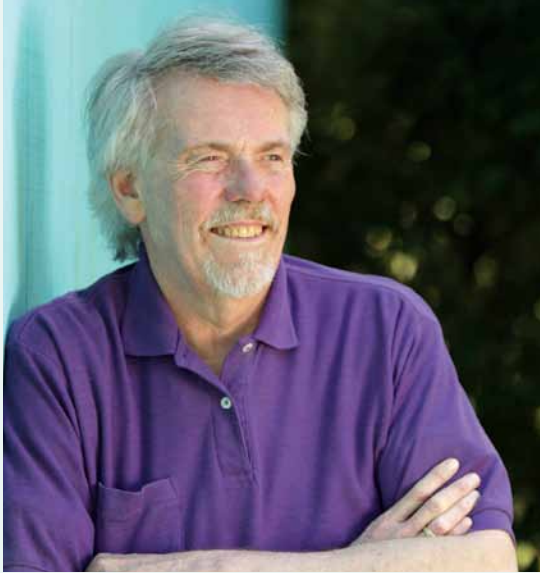
ADMINISTRATION

Joyce F. Jackson, president and chief executive officer
 Suhail Ahmad, MD, chief medical officer



"All of us experience a major medical event in our families at some time. Northwest Kidney Centers really does provide support – financial, emotional and social programs – for those in need." Hank Florence

Hank and Dr. Lisa Florence are regular donors to Northwest Kidney Centers. Lisa is a member of our board of trustees and a transplant surgeon.



Northwest Kidney Centers has sustained Gary Severson's life since 1967. We treated him with kidney dialysis in a center, trained him to do it at home, and now provide transplant medication from our kidney-specialty pharmacy.

Nooksack, Washington

June 30, 2011

Dear Northwest Kidney Centers staff,

I have been a kidney patient associated with Northwest Kidney Centers since May 1967. In November 1968 I began kidney machine dialysis in Eklind Hall and in January 1969 I began the home dialysis training program. I then dialyzed in my apartment until I received a kidney transplant on July 8, 1971. I still receive my prescription drugs from your pharmacy. Thank you for your wonderful support during the past 43 years. Truly I would not be writing this letter today if you had not been available in 1967. You have always been fair and helpful and caring. More than one of you has gone the "extra mile" for me with personal actions that came from your heart and were beyond your job description. Patients in the Northwest are extremely blessed to have a kidney center with such good patient-related qualities. I am celebrating the 40th anniversary of my successful kidney transplant. Without your initial acceptance of me into your kidney program and your continued follow-up, my kidney transplant probably never would have even occurred, or been so successful.

Gary Severson

Northwest Kidney Centers keeps people alive with dialysis care, educates the public about kidney health, and collaborates with UW Medicine in the Kidney Research Institute. We are one of very few community-based, nonprofit dialysis providers in the country. Founded in Seattle in 1962, ours was the first out-of-hospital dialysis program in the world, and it is still a model in the field.