

# NKC S.A.M.B.A. Zemplar Edition

Safely Adjust & Manage Bone disorder Algorithm

R. Winrow, MD



# NKC S.A.M.B.A. Treatment Tiers

Zemplar 12mcg

Zemplar 14mcg

Tier 9

Tier 10

Call MD

Tier 8

Tier 7

Tier 6

Tier 5

Tier 4

Tier 3

Tier 2

Tier 1

Tier 0

Zemplar 10mcg

Zemplar 8mcg

Zemplar 6mcg

Zemplar 5mcg

Zemplar 4mcg

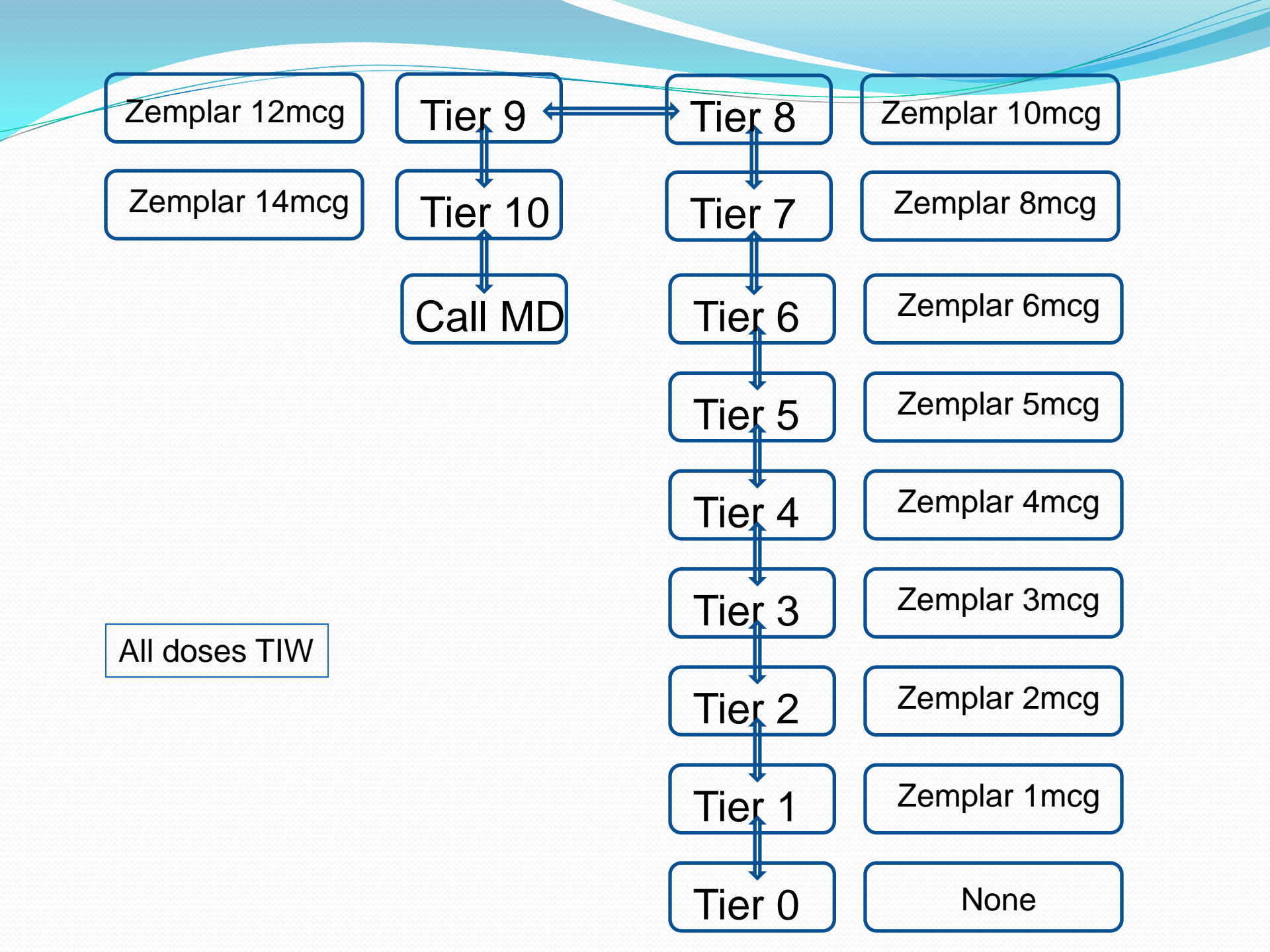
Zemplar 3mcg

Zemplar 2mcg

Zemplar 1mcg

None

All doses TIW



# NKC S.A.M.B.A. Starting Assignments

Starting PTH	Tier
>401	Tier 3
150 – 400	Tier 2
< 150	Tier 0



# NKC S.A.M.B.A. Lab Frequencies

# Calcium (target 8.5 – 10.2)

Ranges	Frequency of Ca draw
> 12.0	q treatment & notify MD
11.0 – 12.0	q week & notify MD
10.3 – 10.9	q 2 weeks
7.6 – 10.2	q month
< 7.6	q 2 weeks & notify MD
Movement to a different Tier	Within 2 weeks, or as above, which ever is sooner
If repeat Ca within 7 days of monthly labs, draw with monthly	

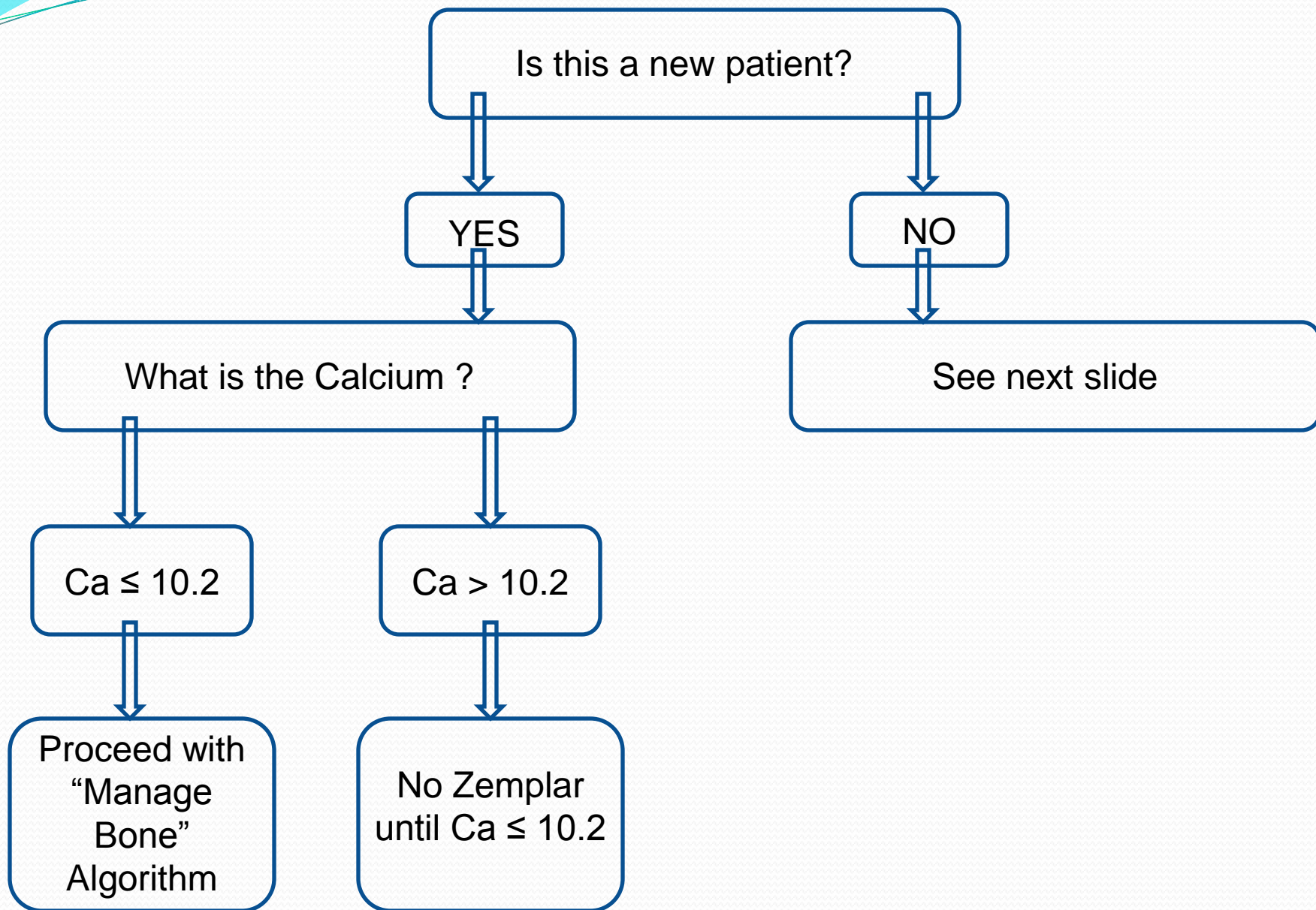
# PTH (Target 150 – 400)

Ranges	Frequency of PTH
In Target	Per Flow Sheet (Quarterly: Jan, Apr, July, Oct)
Out of Target	q month until at goal

- New or transfer to HD patients must have a minimum of 2 consecutive PTH measurements, even if at goal, prior to quarterly checking
- PTH draw must be at least 4 weeks after any Treatment Tier change
- If > 4 weeks from Tier change, and < 4 weeks from quarterly draw; use quarterly draw



NKC S.A.M.B.A.  
“Safely Adjust” Algorithm



Prevalent Patients:  
What is the Calcium ?

$Ca \leq 10.2$

Proceed with  
"Manage  
Bone"  
Algorithm

Ca 10.3 – 10.9

- Reduce 1 Tier
- Recheck Ca per protocol

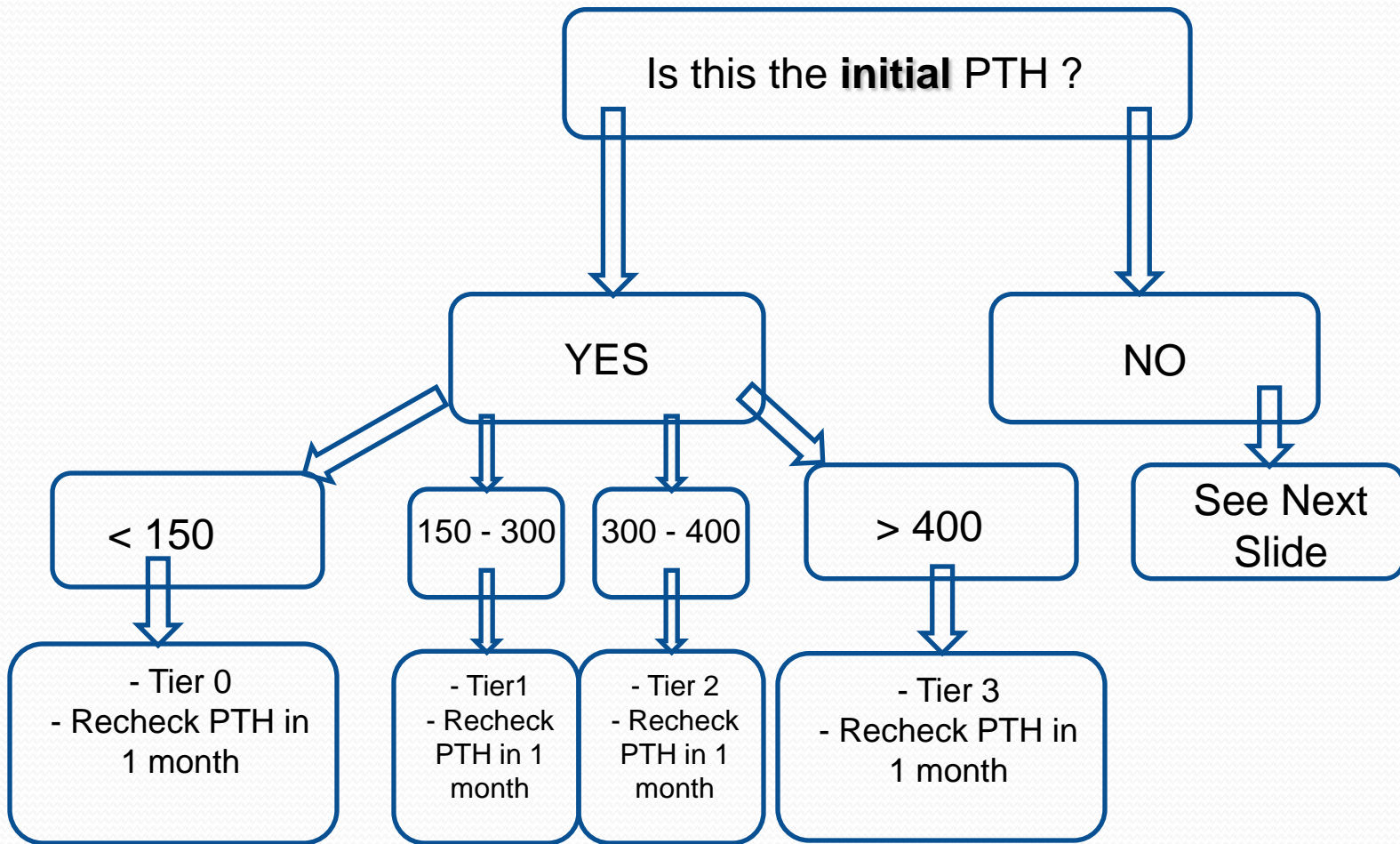
$Ca \geq 11$

- Hold Dose
- Recheck Ca per protocol

- Once  $Ca \leq 10.2$ , reduce 1 Tier & resume Zemplar



NKC S.A.M.B.A.  
“Manage Bone disorder”  
Algorithm



**Prevalent Patient:**  
What is the iPTH ?

< 150

- Hold & Decrease 1 Tier
- Recheck PTH in 1 month

150 – 400

1-PTH ratio:  
(1-Current/Prior)

≤ 80%

- Maintain Current Tier
- Recheck PTH in 1 month

> 80%

- ↓ 1 Tier
- Recheck PTH in 1 month

> 400

See Next Slide

**Prevalent Patient:**  
What is the PTH ?

>400

Previous increase  
in dose; or no  
change in  
previous dose

Previous  
decrease in  
dose

1- PTH ratio:  
(1- Current/Prior)

-Dose Zemplar @  
Current Tier

**< 20%**

-↑ 1 Tier  
- Recheck  
PTH in 1  
month

**20 - 80%**

- Maintain  
Current Tier  
- Recheck  
PTH in 1  
month

**> 80%**

-↓ 1 Tier  
- Recheck  
PTH in 1  
month

